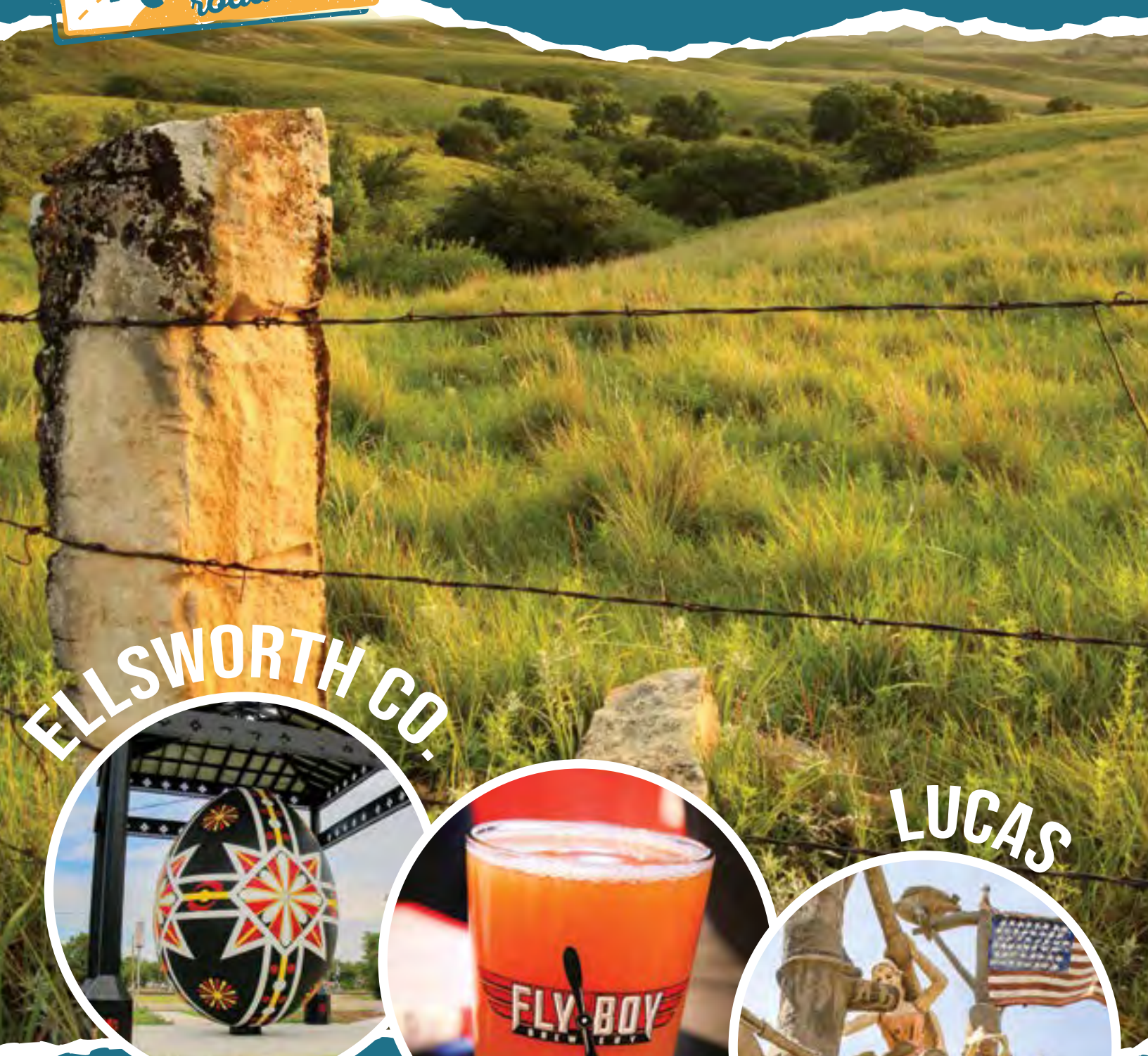




May 2-5, 2024

BIGKANSASROADTRIP.COM



ELLSWORTH CO.



LUCAS



LINCOLN CO.



A PROJECT OF THE
KANSAS SAMPLER FOUNDATION

DON'T MISS S.P. DINSMOOR'S JAW-DROPPING MASTERPIECE

GARDEN of EDEN.

EST. 1907 • LUCAS, KANSAS



ALSO VISIT ROY & CLARA MILLER'S PARK (NEXT DOOR)

305 EAST 2ND STREET • LUCAS, KS • 785-525-6395 • GARDENOFEDENLUCAS.ORG

Big Kansas Road Trip

Information Centers

INFORMATION CENTERS are available in **Ellsworth County, Lincoln County, and the City of Lucas.**

These centers are where you'll find the program, updated Day Schedules and other BKRT and community information. These are also good locations to leave donations of toilet paper and paper towels you have purchased locally.

ELLSWORTH CO.

Museum Grounds

104 W South St, Ellsworth

Thurs - Sat: 9am - 4pm

Midland Hotel & The Barn

414 26th St, Wilson

Thurs - Sat: 9am - 4pm



LINCOLN CO.

Lincoln County Historical Museum

216 W. Lincoln, Lincoln

Thurs - Sat: 9am - 4pm

LUCAS

Chamber of Commerce

135 S. Main, Lucas

Thurs - Sat: 9am - 5pm



Look for the signs!

Participating BKRT venues will be designated with signage.

Find Us On Social Media



#BKRT2024



Check Our Website

bigkansasroadtrip.com



Crispin's Drug Store Museum

Post Rock Scout Museum

Lincoln County Historical Society

LINCOLN COUNTY

www.lincolnmuseum.com
www.crispinsdrugstoremuseum.com
www.postrockscoutmuseum.com

EXPLORE THE PAGES OF HISTORY



Table of Contents

1	Information Centers	19	What is the Kansas Sampler Foundation & Kansas Explorers Club Meeting
3	Table of Contents	20	Restorations in the BKRT Country
5	What is the BKRT?	22	Attractions
6	How does the BKRT work?	30	Events
7	Choosing North Central	38	Places to Eat
9	The Kansas Guidebook Resource	41	Stumpin' for Kansas
11	BKRT Explorers Club Auto Bingo	42	Map of Ellsworth County
12	Ellsworth County	43	Map of Lincoln County
14	Lincoln County	44	Map of the City of Lucas
16	Community of Lucas	45	Shop Stops

The 2024 Big Kansas Road Trip Guide was produced by 314 Graphic Design of Courtland, Kansas, in collaboration with the Kansas Sampler Foundation (KSF). Photos have been provided courtesy of KSF and volunteers. Every effort has been made to ensure the accuracy of the content published in this guide. However, we assume no responsibility or liability for errors or omissions in this guide. Reproduction without permission is strictly prohibited.

Shop Small In Lincoln Center!



785-524-4401
123 S-4th St,
Lincoln Center, KS 67455

HOURS
MON - SAT: 7AM-8PM
SUN: 8AM-8PM

Like us on Facebook! 

LINCOLN GROCERY

A family-owned store offering a convenient one-stop shop where you can find everything you need - from everyday essentials to specialty items from around the world!

Breakfast and lunch grab-and-go options for a quick freshly-made hot meal!

FRIED CHICKEN SERVED DAILY!

Visit lincolngrocery.com and sign up to receive ads and special offers!



MITY MART

785-524-4644
1803 KS-18
Lincoln Center, KS 67455

Daily Breakfast and Lunch specials served Monday through Friday!

- Grab-and-Go Snacks
- Lottery Tickets
- Gasoline
- Hunt Brothers Pizza
- ATM
- Diesel
- Fresh Sandwiches
- Ice

Monday - Friday 5am-10pm
Saturday 6am-10pm & Sunday 6am-9pm

Like Us On Facebook! 



Locally-owned full-line convenience store at the intersection of Highways 14 and 18.



Patterson Health Mart
PHARMACY Lincoln

We offer prescriptions, gifts, chocolates, photo station, and a fun selection of books/toys/plushies!

IN-TOWN DELIVERY FOR NO EXTRA CHARGE

HOURS M-F 9AM-12:30PM & 1:30PM-6PM Sat 9AM-Noon (785) 524-4649

Look to Patterson's for exciting 2nd Saturday sales!

Check out our great selection of Greenleaf Gifts and luxurious Caren hand care products!

SEIRER'S CLOTHING

Welcome BKRT '24!
Present this ad in store & receive a free keychain!

Sip & Shop
with us in store
Friday, May 3rd & Saturday, May 4th

complimentary PHOTO BOOTH
Treat Me & Sew Me!

785-524-4752
543 W Lincoln Ave
Lincoln Center, KS 67455

In Store Hours
Mon - Fri 10am-6pm
Sat 10am-4pm

Online 24/7
shopseirers.com





CELEBRATING 10 YEARS!





THE KC QUILTING COMPANY

Over 800 bolts of premium quilting fabrics, notions, as well as long arm edge to edge and custom quilting services!

Perfect for shop-hoppers and the "Block of the Month" quilting classes.

Hours
Friday 1:00pm-5pm
Saturday 9:30am-5pm

139 W Lincoln Ave,
Lincoln Center, KS 67455

Find Us On Etsy!





Village Lines

Celebrating Kansas products since 1956. Now sharing space with The KC Quilting Co!

BKRT Hours
Mon-Fri: 11:30am-5:30pm
Sat: 11:30am-4:30pm

Kansas-made southerners of limestone, wheat, r-shirts, and books by Kansas authors.

Glean, Dairy, Preservative-Free Foods!

Make new friends while sampling Kansas Sunflower seed cookies and our specialty drinks around our gathering table!

785-524-5133
139 W Lincoln Ave
Lincoln Center, KS 67455



POSTROCKFITNESS.COM

MEMBER OPTIONS: Pay-As-You-Go Classes, Monthly/Annual Memberships

STAFF HOURS: Daily from 4:30 a.m. - 11:00 p.m.

ADDRESS: 113 W Lincoln Ave., Lincoln, KS 67455

PHONE: 785-524-9008

NOTE: Gym doors controlled by barcode given after purchase online



Viv's Retail LIQUOR

785-524-4644
405 E. 6th St. Lincoln Center, KS 67455

Conveniently located on Highway 14, pull in and park by the big pink flamingo to find Viv's Retail Liquor's wide selection of liquor, beer, wine and spirits!

Welcome BKRT '24!
Present this ad to receive a free bottle opener!

Hours
Monday - Friday 9am-9pm
Saturday 9am-6pm



WHAT'S IT ALL ABOUT?

It's an invitation to get to know rural communities.

Come find wild horses in Ellsworth County, watch a post rock quarry demonstration in Lincoln County, and, in Lucas, see grassroots art everywhere— streetlight poles to an unforgettable public bathroom.

You can hear about these things or see them in a brochure, but it can't compare to being there in person. On this road trip, you can take a tour down into two missile silos (for a fee), try your hand at grave witching, go dark sky viewing, see the World's Largest Versions of the World's Smallest Versions of the World's Largest Things and eat pie on a porch—all against the backdrop of the Smoky Hills Region, where post rock and Dakota sandstone structures dominate the landscape.

The Big Kansas Road Trip (BKRT) is about being there. It's about the smells, sounds and customs of the area. Watch Czech dancers and frontier military re-enactors in Ellsworth County, eat Danish pancakes and look for stone arched-bridges in Lincoln

County, and check out the limestone rock break demonstration and see the preeminent artist-built environment, the Garden of Eden, in the city of Lucas. You'll encounter musicians and artists. You can visit farms, watch cowboys brand cattle, tour a manufacturing plant, go on an owl hike, see rare Crowned geckos and eat in small town cafes and bar and grills, order from food trucks, or fellowship with community members

You can hear about these things or see them in a brochure, but it can't compare to being there in person.

hosting meals to benefit everything from senior centers to area cattlemen. The BKRT is about the full effect, all five senses in action. There's no comparison to reading about a place and having these first-hand experiences.

"We've asked these two counties and Lucas to just be themselves," said Marci Penner, a co-director of the Kansas Sampler Foundation. They've added special, scheduled activities as they enthusiastically want to share their community story with visitors. It's a hospitable, open-house atmosphere where visitors will feel welcomed, and locals can show what they have and who they are in a low-key manner."

Penner continued, "The shopping options give participants an opportunity to make a real economic impact on local businesses and to understand what it takes to live and work in a rural community."

Though the Inman-based Kansas Sampler Foundation facilitates the BKRT each year, it's local leadership that leads the planning in the counties. Led by Stacie Schmidt and Michelle Skurkis in Ellsworth County; Kelly Gourley and Kris Heinze in Lincoln County; and Lacie Austin, Erika Nelson and Connie Dougherty in Lucas, many, many people are involved in the process.

Penner encouraged explorers to take advantage of the event to experience Kansas in a new way. "You get to pick and choose your own adventure concentrating on what you like best," she said. "Choose your own schedule, your own route and travel at your own pace. Let your curiosity guide you. Talk to the locals. Just have fun!"

Two counties and an awesome town. Four days. Hundreds of people. All seeing north central Kansas with new eyes.

HOW DOES THE BKRT WORK?

Just jump in your car and start exploring! Really. That's it.

Caravan with friends or head out on your own. There will be some scheduled activities to help you get to know the rural culture of the area but be as spontaneous as you'd like. Come all four days, or just one. Part of the fun is acknowledging other people on the adventure, so buy a BKRT flag at a Stump session (see p. 41) or put some kind of sign on your car so you can be identified as a BKRTer.

1

Plan your Road Trip from a menu of choices. Listings in this guide are condensed for space considerations but you can find more specific and detailed information on the bigkansasroadtrip.com website or the Big Kansas Road Trip Facebook page. Information with last minute changes will be available at the information centers.

2

BKRT signs will be in front of participating entities and will indicate where to turn when out in the country.

3

Make it your own adventure and enjoy the journey!

Practice Patience & Kindness

When you have an open house like this you can't know how many people will show up. Will there be dozens or hundreds? How will the weather affect everything? Will there be enough bathrooms? How much food should a restaurant fix? How much staff should be scheduled? There won't be cell phone coverage everywhere and some people may get lost. The unknown for both the locals and the visitors creates an opportunity for extending patience and kindness, helping each other, and making the variables part of the grand experience.

Help make the story a good one!



DO YOUR QUEST YOUR WAY

Maybe you want to eat pie in every county or let your kids play on every playground. Perhaps your quest is to walk a block in every city, buy \$18.61 worth of something in every county, or take a selfie at a mural in every town. Whatever it is, do your thing!



#BKRT2024

Choosing North Central



One of the most fun things about the Big Kansas Road Trip is that it helps lead people to places they've never been in the state. The Smoky Hill region in north central Kansas is home to a vast array of post rock structures, petroglyphs, the Faris Caves, ancient Indian trails, and some of the best hiking and biking trails at state lakes. Participants have enthusiastically traveled to all parts of Kansas, beginning with Barber, Comanche and Kiowa counties in 2018.

The annual event has taken the public to the most northwestern counties (Cheyenne, Sherman and Wallace), the most northeastern (Brown, Doniphan and Nemaha) and the most southeastern (Bourbon, Cherokee and Crawford) in Kansas. In 2022 we explored Jewell, Republic and Smith counties and now for this sixth year we hover again in the middle.



This area is home to five of the finalists for the Kansas Sampler Foundation's statewide 8 Wonders of Kansas: Mushroom Rock State Park near Carneiro and the Post Rock Scenic Byway – Geography; Vonada Stone Quarry, Sylvan Grove and Brant's Meat Market, Lucas – Commerce; and Garden of Eden/Lucas – Art. You'll have the opportunity to visit two state parks and reservoirs (Kanopolis and Wilson), 10 incorporated cities (with only two above 1,000 population), Kraslice eggs, a historic railroad hotel, a rare drive-in theater, stone-arched bridges, and one microbrewery.

What more could an Explorer ask for?

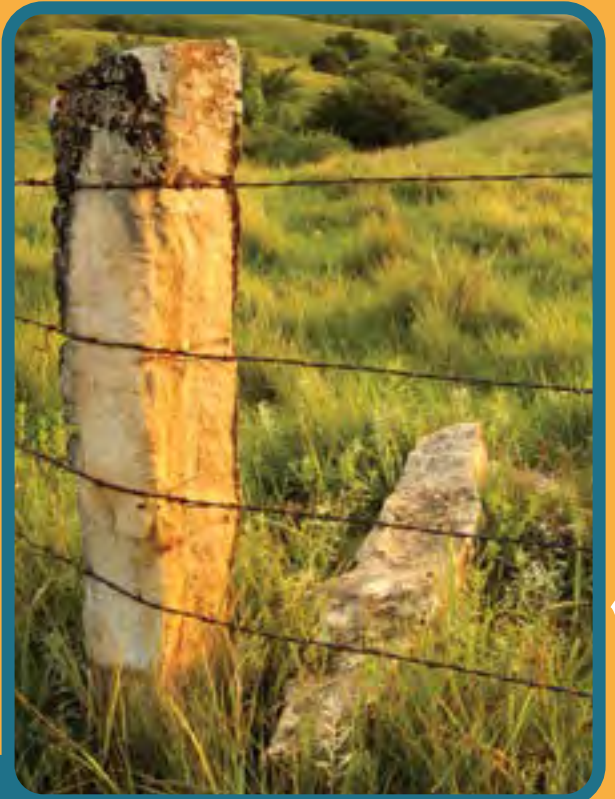
A promotional sign for the Big Kansas Road Trip. The sign features a large, vibrant sunflower on the left side. The text on the sign reads: "Welcome TO NORTH CENTRAL KANSAS FOR THE BIG KANSAS ROAD TRIP EXPLORENCKS.COM" in a mix of bold, sans-serif and cursive fonts. Below this, it says "FOR THE CENTERED NORTH CENTRAL KANSAS" and "North Central Kansas Tourism is a coalition of 20 counties that promote all there is to see and do in NCK." In the top left corner, a black triangle contains the text "COME BACK SOON TO EXPLORE EVEN MORE!".



What is Post Rock?

When the pioneers began settling the area, there were no trees to use for building materials.

The Greenhorn layer of limestone (also known as post rock) though was readily available, as a relatively even 8-10" layer was close to the surface. It was also soft and easily workable, and with only a few simple tools, "logs" could be quarried and moved into place as building bricks, fence posts, and more.



For more information go to livelincolncounty.com/post-rock-capital-of-kansas/

YOU ARE INVITED TO EXPLORE POST ROCK COUNTRY!

WELCOME BIG KANSAS ROAD TRIP!

LIMESTONE DEMONSTRATIONS

BREAKING & SPLITTING WITH FEATHERS AND WEDGES

• Vonada Stone Quarry

Three miles north from the junction of Hwy 18 & 181, then two miles west on Oak Drive.

Demonstrations Friday, May 3 at 4 p.m. and Saturday, May 4 at 10 a.m. Quarry is available for drive-by viewing anytime.

• Bluestem Quarry & Stoneworks

207 S. Main St., Lucas (backyard). Saturday, May 4 from 1-3 p.m. (come and go).

Jon Pancost will demonstrate and answer questions.



- Barton
- Cloud
- Edwards
- Ellis
- Ellsworth
- Ford
- Hodgeman
- Jewell
- Lincoln
- Mitchell
- Ness
- Osborne
- Ottawa
- Pawnee
- Republic
- Rush
- Russell
- Washington



Post Rock Scenic Byway - carvings



WPA Limestone Bridge at Denmark



Round Limestone Jail at Wilson

Kansas
**POST ROCK
LIMESTONE**
COALITION

kansaspostrocklimestone.org

THINGS TO THINK ABOUT



Bring lawn chairs



Gas up whenever you can.
Not every town has gas pumps.



Restaurants will serve until the
food is gone.



If it's been raining, stay off dirt or
gravel roads.



It's a courtesy to bring rolls of toilet paper and
offer them to businesses that are opening their
restrooms or leave them at info centers.



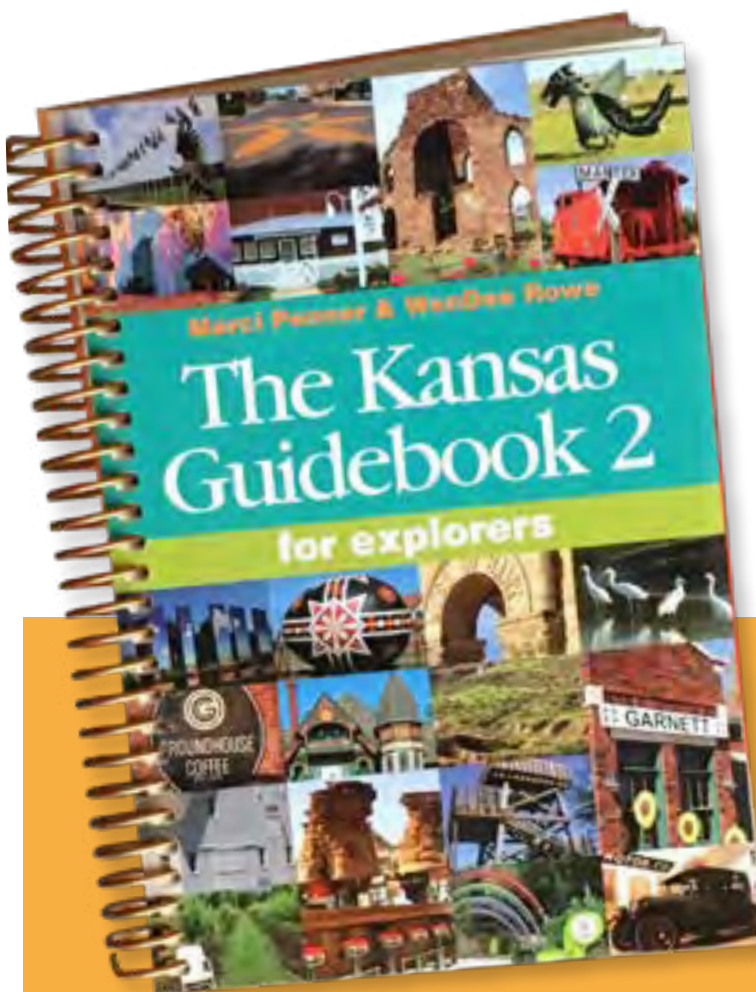
At the information centers, pick up a sticker,
courtesy of Kansas Explorers #2533 Don and
Teresa Grabendike, that will help say thanks to
those extending the usage of their facilities.



When you post, use #BKRT2024.

The Kansas Guidebook 2 For Explorers

The Go-To Resource!



Co-authors Marci Penner and WenDee Rowe went to every one of the 627 incorporated cities in Kansas to research the 480-page coil-bound guidebook, *Kansas Guidebook 2 for Explorers*. The 4,500 entries in the 2017 guidebook include addresses, hours, websites, and descriptions. More than 1,600 pictures bring color to a statewide array of things to see and do.

The book is a project of the Kansas Sampler Foundation and can be found in more than 150 locally-owned stores statewide.

Look for the list and/or buy online at kansassampler.org.

It can also be purchased at The Stump during the BKRT. Let the guidebook help direct you around to the main attractions in all three BKRT counties.

LODGING & RESTAURANTS

To find a list of lodging and restaurants
in the three counties, please go to
bigkansasroadtrip.com

Is this an event for kids?

YOU BET IT IS!

They can climb on big rocks, walk on trails, kayak, or ride a bike. They can see fire trucks up close, stick their toes in state lakes, and ride around Wilson in a kids' train to see all the miniature Czech eggs. They can step inside old jails, watch cattle branding, get nose-to-nose with cattle, touch real shark and reptile teeth, go on bird hikes, look through telescopes to see the night sky, and see real life Leopard geckos!

Playgrounds abound. Buy keychains and then go around Lucas to collect charms. Play Explorer BKRT Auto Bingo (see page 11) or take part in the numerous community scavenger hunts. These experiences will nurture a love for Kansas and encourage the next generation of Kansas explorers!



233 Hwy 232 Wilson, KS 67490

KANSAS ORIGINALS
Market & Gallery

I-70 Exit 206

May 2ND - May 5TH
11 AM to 4 PM

Meet and Greet Kansas Artists,
Craftmen, Food Producers & Authors

www.kansasoriginals.com | 785-658-2602

The Largest Selection of Kansas-Made, Kansas-Grown items found under one roof!

BKRT EXPLORER AUTO BINGO

How about adding a little adventure to your road trip? Cross off the squares below as you complete them. When you've completed all you can, send your form to Kansas Sampler Foundation, 978 Arapaho Road, Inman, KS 67456 or scan and email to marci@kansassampler.org by June 1, 2024. Even better, deliver your form in person at the Kansas Explorers Club meeting!

We'll draw a winner & send you a prize!

Find the Civil War Monument at the Wilson Cemetery	Find the stone single-arch bridge at Denmark	Put your foot on the brass rail in Brant's in Lucas	Browse in Kansas Originals, Wilson	Open a cookbook in Barnard
Utilize the Bowl Plaza in Lucas	Find a cow at Oak Creek Mini Jersey, Ellsworth County	Hug the big cottonwood tree in Lincoln city park	Pick a favorite Main Street pole art in Lucas	Look for wild horses, Ellsworth County
Find the shock box in the Crispin Drug Store Museum, Lincoln	Find one of four Post Rock faces on K-232 between Wilson Lake Dam and Lucas	ADD YOUR OWN	Find the cave openings at Faris Caves, Ellsworth County	Find the suitcase gravestone in the Lincoln Cemetery
Go inside The Warehouse at the old Farmers Elevator Co-op in Sylvan Grove	Step inside the 1873 jail in Ellsworth	Sign the guestbook at World's Largest Things Roadside Sideshow Expo in Lucas	Step inside the depot in Sylvan Grove	Find the memorial to Mother Bickerdyke at her Memorial Cemetery, near Ellsworth
View the South Fork Spillman Creek Bridge near Sylvan Grove	Find German writing on a gravestone at the Holyrood Cemetery	Find the outdoor mural in Vesper	Visit with a re-enactor at Fort Harker in Kanopolis	Find a favorite artist at Switchgrass Studio in Lucas

Name: _____

Address: _____

Phone: _____

Email: _____

Get social while you're road trippin'. Show us all the fun you're having and great places you've explored!

#BKRT2024  



Ellsworth
COUNTY



Ellsworth County was established in 1867 and named after Fort Ellsworth (later renamed Fort Harker) in honor of the fort's construction supervisor 2nd Lt. Allen Ellsworth. In the 1870s Ellsworth gained fame as the wickedest cowtown in Kansas as cattle were shipped to eastern markets from the Ellsworth stockyards. The county is home to Kansas' oldest recreation areas (Kanopolis State Park and Mushroom Rock State Park), the state's premier Kansas products showcase (Kansas Originals, Wilson), one of the few remaining drive-in theaters (Kanopolis), the World's Largest Czech Egg (Wilson), and a thriving downtown (Ellsworth). Holyrood has an origin date of 1876 and was where those of Irish, German and Czech origin landed. Originally spelled Hollyrood, a sign painter left off an extra "L" in 1888 and it became Holyrood. Lorraine is a sweet little friendly town—complete with a volunteer fire department!

▶▶▶ *Ellsworth*, population 3,020

▶▶▶ *Holyrood*, population 405

▶▶▶ *Kanopolis*, population 364

▶▶▶ *Lorraine*, population 128

▶▶▶ *Wilson*, population 836



Lincoln COUNTY



Lincoln County, formally established in 1870 and named for President Abraham Lincoln, is known as the Post Rock Capital of Kansas. Whether sticking to the highways or daring to do dirt, you'll see post rock limestone bridges, barns, schoolhouses, and many miles of stone fence rows that gave the county its nickname. Keep your eyes open for creatures in the Open Range Zoo! Lincoln is home to numerous museums, an outstanding art gallery, interesting shops and one of the most huggable cottonwood trees in the state. Stop by Lincoln's Free House whose story and transformation has gone viral on social media and was featured on the Magnolia Network. A cropduster converted an old hardware store in Sylvan Grove to be a microbrewery, Fly Boy Brewery & Eats. Find more than 9,000 cookbooks in Barnard, and try out the new bar and grill in Beverly. Unincorporated Denmark is an energetic historic district where you'll find evidence of a Danish settlement (and learn about the special shape of Danish pancakes).



- ▶▶▶ *Barnard*, population 64
- ▶▶▶ *Beverly*, population 135
- ▶▶▶ *Denmark*, unincorporated
- ▶▶▶ *Lincoln*, population 1,171
- ▶▶▶ *Sylvan Grove*, population 291
- ▶▶▶ *Vesper*, unincorporated
- ▶▶▶ *Westfall*, unincorporated



CITY OF *Lucas*



Lucas, population 393 and established in 1877, is located in Russell County, just a few miles west of Sylvan Grove on K-18. The Garden of Eden and Lucas, a grassroots art mecca, in combination were named one of the 8 Wonders of Kansas Art. The Garden of Eden is a world-renowned artist-built environment with one of the most fascinating sculpture gardens in the world. Lucas has more than two dozen art installations, environments, and public artworks throughout town. One of the more recent environments, the Bowl Plaza, was voted to be the second most beautiful public restroom in the nation. It's also home to the award-winning Brant's Meat Market which celebrated their 100th anniversary in 2022. Finally, Lucas is also the northern point of the 18-mile Post Rock Scenic Byway that connects to a southern end point in Wilson.

►►► **Note: People have asked why we didn't include all of Russell County.**

Feedback from multi-year BKRTers revealed that it was just too much territory to cover when three full counties were involved. We heard you. We slimmed down to two counties and added the community of Lucas in Russell County because it's part of the Kansas Scenic Byway that goes through Ellsworth and Lincoln counties and it shares a school district with Sylvan Grove of Lincoln County. The Russell County Convention & Visitors Bureau and Economic Development, based in Russell, have been extremely supportive of this project.

A LITTLE CITY WITH
LOTS OF PRIDE.



HISTORY

1887 SANTA FE RR DEPOT MUSEUM
FIRE DEPARTMENT TOUR
H & B OPEN HOUSE
PROGRESS SCHOOL REMODEL
STAINED GLASS/CHURCH TOUR
4 HISTORIC CEMETERIES

1887 SANTA FE RR DEPOT MUSEUM



EXPLORE

CENTURY FARM TOUR
OLD FASHIONED BINGO
PICKIN' AND PIE @ DEPOT
QUILT AND CRAFT SHOW
SUNFLOWER MURAL

CITY OF

Holyrood

EST 1886

16 MINUTES SW OF
ELLSWORTH ON K-156

SOUTH OF WILSON VIA
105 RD TO NE 160TH AVE
(1ST RD) TO AVE. T EAST



VISIT US!

CHECK OUT THE GUIDE
FOR OUR BKRT EVENTS!



DINING

C & V - DINE IN/TO GO
SANDWICH SUPPER @ LEGION
SUNSET LOUNGE
VEGAN LUNCH POP-UP
68TH ANNUAL PANCAKE FEED

THANK YOU TO OUR LOCAL SPONSORS!

C & V CONVENIENT STORE | CENTRAL PLAINS USD 112 | CITY OF HOLYROOD | ELLCO INSURANCE | HGB COMMUNICATIONS | HOLYROOD BOOSTERS
HOLYROOD LIONS CLUB | JEZEK FARMS | ONEOK | PLUM CREEK APARTMENTS | SIEMSEN WELL SERVICE | SUNSET LOUNGE FAMILY RESTAURANT EST. 1975
THUNDERBIRD CATTLE CO. | WENZ INTERIORS

WHAT IS THE KANSAS SAMPLER FOUNDATION?

Our mission is to preserve and sustain rural culture.



Kansas Sampler FOUNDATION

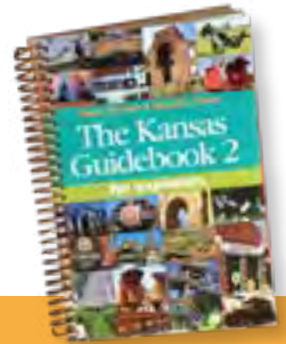
The Inman-based Kansas Sampler Foundation is a public, non-profit organization with a mission to preserve and sustain

rural culture. With 4½ employees (Co-directors Marci Penner and Sarah Green; PowerUp and Engagement manager Simone Elder; project manager WenDee Rowe; and bookkeeper Kim Clark) and a board of directors (Stacy Barnes, Greensburg; Luke Mahin, Courtland; Dave Procter, Manhattan; Lea Ann Seiler, Hanston;

and Sarah Werner, Winfield), the KSF relies on a strong statewide network to help accomplish projects like the Big Kansas Road Trip, the Kansas Explorers Club, *The Kansas Guidebook 2 for Explorers*, the 8 Wonders contests and guidebook, the We Kan! Conference, We Kan! awards, the Big Rural Brainstorm, Do-alogues and the PowerUp Movement. Our work focuses on educating Kansans about Kansas but also supporting and networking rural communities. kansassampler.org.

KANSASSAMPLER.ORG

- ▶ Purchase guidebooks
- ▶ Join the Kansas Explorers Club
- ▶ Sign-up for email updates
- ▶ Support the WeKan! Network



WHAT IS THE KANSAS EXPLORERS CLUB?

The Kansas Explorers Club is a fluid group of difference-making people who love Kansas and want to get to know her better. The membership club, a project of the Kansas Sampler Foundation, was created to

inspire, educate, and encourage the exploration and appreciation of Kansas...and to have fun doing it. The club is celebrating its 30th anniversary this year!

Membership is \$18.61 for individuals and \$30 for families.

Members receive six print newsletters a year, a membership card, and knowledge of the secret greeting ritual. The newsletters feature Kansas adventure ideas for year-round road trips and ways to see Kansas with new eyes. explorekansas.org.

...difference making people who love Kansas and want to get to know her better.



ATTEND THE KANSAS EXPLORERS CLUB MEETING

Bring a lawn chair!

May 5, Sunday, 10am - All welcome

Lincoln, courthouse lawn, 216 E. Lincoln

Note: In case of bad weather, meet at the Finch Theatre in Lincoln, 122 E. Lincoln Avenue.

The Stump will start at 10am, followed by the meeting. The Kansas Explorers Club is a fluid group of people who love traveling the backroads and getting to know the nooks and crannies of the state.

One of our few annual get togethers is during the BKRT at the Kansas Explorers Club meeting. But, anyone is invited to attend. It's a fun way to wrap up the Big Kansas Road Trip.

Learn more at:

kansassampler.org/kansasexplorersclub

Restoration happening in BKRT country!

Visit all of these places during the BKRT.
Check the website or this guide for specific open times.

ELLSWORTH COUNTY

Atlas Ad Astra Missile Silo, 354 4th Road, Wilson. Transforming an abandoned decommissioned Atlas F Missile Base built in the 1950s-1960s during the Cold War, this site is being renovated to serve as an educational center, camp site, and a breathtaking opportunity to enjoy the sunsets, campfires, and simplicity of life "unplugged". atlasadastra.com.

Progress School, 1401 5th Road, Holyrood. The beautiful stone Progress School was built in 1902. It's now being converted into a home by Ted and Carrie Schmid. They'll use solar and wind energy, utilize wildlife conservation practices, have fish ponds to provide fertilizer for an in-ground greenhouse; produce their own milk, eggs, poultry, and more.

The Missile Silo Ranch, 2432 Avenue, Brookville. For history enthusiasts, this is an unparalleled opportunity to step back in time and see the legacy of the 550th Strategic Missile Squadron, where history collides with modern life. Check into the opportunity for tours or an overnight stay at a beautifully renovated Airbnb. themissilesiloranch.com.

Wilson Czech Opera House Restoration, 415 27th St., Wilson. Destroyed by fire in 2009, the historic Wilson Opera House is undergoing a lofty restoration to maintain the structural integrity of the block, and also to revitalize the community's gathering options by making the space an aesthetically pleasing open-air theatre. Wilsonoperahouse.com



LINCOLN COUNTY

Lincoln Art Center, 126 E. Lincoln Avenue, Lincoln. Art and style are in the bones of this 1910 building where Hazel Avery first made the Kansas state flag and prominent regional artists have shown their work for 30 years. The Lincoln Art Center has recently made improvements to the storefront and awning and installed new flooring. Lincolncartcenter.org.

Old Lincoln State Bank Exterior Restoration, 101 W. Lincoln Avenue, Lincoln. Built in 1886 and one of the most prominent Late-Victorian style buildings in the downtown, the original windows and exterior woodwork have recently been restored and the corner steps rebuilt with a Heritage Trust Fund grant from the Kansas Historical Society. Exterior-viewing only.



continued...

Post Rock Fitness, 113 W. Lincoln Avenue, Lincoln. For nearly 100 years, the C.R Building/Hundertmark's Variety was a general goods and grocery store, but after being modernized in the 1980s and sitting vacant for a few years the interior has recently been restored and the space transformed into a beautiful fitness center. Postrockfitness.com.

The Warehouse/Farmers Elevator Co., 129 S. Main, Sylvan Grove. Built in 1926 by the Farmers Elevator Co, the Sylvan Senior Center has been working diligently for six years to realize their dream of a community events center through an extensive rehabilitation project that includes a new storefront, exposed barrel-vaulted ceiling, and exterior courtyard. facebook.com/SylvanSeniorCenter

LUCAS

Florence Deeble Rock Garden, 126 S. Fairview, Lucas. Schoolteacher Florence Deeble's lovely sculptural rock garden is undergoing a cleaning and stabilization, assuring generations to come that her Mount Rushmore, local history tributes, and mini-scenic vistas will continue delighting guests to this NRHP site. Grassrootsart.net/lucas-triangle-sites



Midland
RAILROAD HOTEL
EST. 1928

414 26th St. Wilson, KS 67490
www.midlandrailroadhotel.com
(785) 658 - 2284

@midlandhotelwilson @midlandrailroadhotel

THE WILSON TOURISM HUB
WELCOMES YOU TO WILSON!

@czechoutwilson www.czechoutwilson.com

2711 Avenue E. Wilson, KS 67490
(785) 658 - 2278

Find us on Facebook @themidlandmercantile

The Midland Mercantile Features
specialty gifts perfect for any occasion with local artwork, handmade goods, souvenirs highlight Czech heritage, and products from the great plains of Kansas!

Paid advertisement.



ELLSWORTH EVENTS: MAY 2 - 5, 2024

BOURBON/ WHISKEY TASTING & EDUCATION IN AN UNDERGROUND SPEAKEASY
210 N. DOUGLAS AVE, ELLSWORTH, KS 67439

(THURS - SAT, 10:00AM TO 6:00PM)
(SUNDAY NOON TILL 4:00PM)

25 MIN TOUR COST: \$35.00

Delight your senses with a journey into the world of rich flavors and nuanced notes with spirits from all around the world. Immerse yourself in the art of Bourbon and Whiskey tasting, and education in a One-of-a-kind underground speakeasy restaurant.



NUCLEAR MISSILE SILO TOUR

2432 AVE I, BROOKVILLE, KS 67425

(THURS - SAT, 10:00AM TO 6:00PM)
(SUNDAY NOON TILL 4:00PM)

25 MIN TOUR COST: \$35.00

Includes a Free \$25.00 collectors Missile Silo Coffee Mug and a Free UFO craft beer.

Come explore the Launch Control Center that is now an Airbnb, and follow the 40 ft tunnel in to the missile silo. This incredible underground structure is 52' inside diameter and is approximately 200' deep.

You have to see it to believe it.

NUCLEAR MISSILE SILO EVENING CELEBRATION WITH BONFIRE, MUSIC AND DRINKS

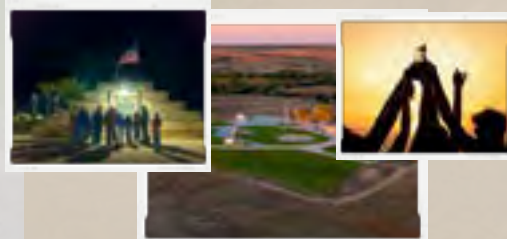
2432 AVE I, BROOKVILLE, KS 67425

(FRI/SAT 8:00PM TO 1:00AM)

5 HOURS EXPERINCE COST: \$50.00

Includes unlimited beers, wine, sodas , water and free \$25.00 collectors Missile Silo Coffee Mug.

Join us for an unforgettable night under the stars at the Nuclear Missile Silo. Revel in the glow of the bonfire, sway to the beats of great music, and sip on drinks that are as explosive as the setting. Overnight camping available see website for more details.



BOOK NOW: Phone : 785-201-9726 Website : <https://bkrtellsworthevents.as.me>

ATTRACTIONS

Ellsworth County

CITY	DAY(S)	HOURS	SITE	DESCRIPTION	ADDRESS	PHONE
Ellsworth	Thu	9am-4pm	Svaty Ranch & Wild Horse Sanctuary	One of four public off-range pastures in the United States for free-range Wild Mustangs. Stop to take photographs or learn how you can adopt a Mustang of your own. Drive by's welcome during daylight hours. Tours available on Thursday, May 2 from 9am-4pm. Call Jake on or before Thursday at 785.531.1967 to schedule a tour. GPS 38.73056, -98.31558	1016 Ave J	785.531.1967
Ellsworth	Thu-Fri	8:30am-4:30pm	Historic Bank Building / Free Popcorn	This architectural beauty, built in 1915, has been home to Citizens State Bank & Trust Company since 1931. Stop in for free popcorn on Friday, May 3.	203 N Douglas	785.472.3141
Ellsworth	Thu-Sat	10am-2pm	Ellsworth Area Arts Council Gallery	The up-and-coming gallery features the work of Kansas artist Jerry Exline and international artist Charles Rogers.	223 N Douglas	785.472.5658
Ellsworth	Thu-Fri	Daylight Hours	Ellsworth County Courthouse	This 1951 structure is an excellent architectural example of the Modern Movement. A Civil War statue stands in front. Mon-Fri 8am-5pm	210 N Kansas	785.472.4161
Ellsworth	Thu-Sat	See Description	Ellsworth County Museum & Hodgden House	The museum complex is on the site of the original commercial district. Enjoy a two-hour tour of the buildings, including the 1878 Victorian Hodgden House and 1886 livery stable, or whatever works for you. Admission fee includes Fort Harker and all buildings at Ellsworth. Thu 12-4pm, Fri-Sat 10am-4pm	104 W South Main	785.472.3059
Ellsworth	Thu-Sun	Daylight Hours	1873 Jail	The oldest building in Ellsworth tells the story of some of the wickedest lawbreakers in the Wild West.	110 Court Ave	
Ellsworth	Thu-Sun	Daylight Hours	1910 Jail	Constructed in 1910, the building might be the fanciest historic jailhouse in Kansas - and it held prisoners in the back area until 1981. Privately owned. Drive by only.	200 Court Ave	
Ellsworth	Thu-Sun	Daylight Hours	Historical Plaza Walking Tour	Seventeen interpretive signs around town, marked by silhouettes, feature the history of Ellsworth and help you visualize the Wild West and Ellsworth's cowtown days.	104 W South Main	
Ellsworth	Thu-Sun	24/7	KANcycle: Bike Sharing for Rural Kansas	KANcycle is a rural bike share program. Ride bikes for free during the BKRT using the Movatic app. In Ellsworth, pick up and return bikes in Krizek Park and at Douglas and Main.	Krizek Park and Douglas & Main	785.826.1583
Ellsworth	Thu-Sun	Daylight Hours	Krizek Park	Krizek Park is a beautiful park with restrooms, covered picnic areas, tennis courts, 18-hole disc golf course, modern playground equipment, walking trail suitable for walkers, bicycles, skates, and skateboards.	Bradley and St Clair Dr	785.472.5566
Ellsworth	Thu-Sun	See Description	Missile Silo Turned AirBnB	Explore the Launch Control Center and follow the 40-foot tunnel into the 200-foot deep missile silo that once held an Intercontinental Ballistic Missile. Tours on the hour and half hour, \$35 per person, children 5 and under free. Reservations and information at themissilesiloranch.com/tours . From Ellsworth go east for 10 miles on J Road (E K-140) and turn north on either 23rd Road or 25th Road. Follow the signs. Thu-Sat 10am-6pm, Sun 12-5 pm	2432 Ave I	785.201.9726
Ellsworth	Thu-Sun	Daylight Hours	Mother Bickerdyke Memorial Cemetery	From K-156, just north on K-14, 1/2 mile west on L, then 1 mile north on 14th. Follow the sandy road past the TV towers to the cemetery. Mother Bickerdyke isn't buried here, but a memorial to her is among 32 Civil War-era graves.	Ellsworth	
Ellsworth	Thu-Sun	Daylight Hours	Mushroom Rock State Park	From K-140 (about 14 miles east of Ellsworth), 2 miles south on K-141, then 2 miles west on K. These mushroom-shaped rocks, one of the top 8 Wonders of Kansas - Geography, are a geologic phenomenon of sandstone spheres and likely served as meeting places and landmarks for American Indians and early pioneers.	From Ellsworth on K-140	
Ellsworth	Thu-Sun	Daylight Hours	National Drivers Hall of Fame	The ornate, historic Insurance Building (NRHP) will one day be home to the hall of fame dedicated to preserving the heritage of the cattle trailing industry. Exterior view only.	115 N Douglas	
Ellsworth	Thu-Sun	Daylight Hours	Preisker Park	Just off the main drag, this old-time park includes a 1940 National Youth Administration band shell, a rock-lined creek, and a series of bridges—a nostalgic and lovely place!	3rd & Blake	
Ellsworth	Thu-Sun	Daylight Hours	I-70 Cross	Find the "guiding light" for interstate travelers in this 60-foot steel cross between the I-70 exits for Vesper (216) and Sylvan Grove (209), on the south side of the highway. It stands near the Excelsior Lutheran Church.	888 C Ave	
Ellsworth	Thu-Sun	9am-7pm	Ellsworth Golf Course	Nine holes wind through subtle hills and beautifully aged cottonwoods. Inside the clubhouse is the 900 Room, available before or after a round for hand-crafted sliders and a drink.	900 E 2nd St	785.472.4236
Holyrood	Thu-Fri	8am-5pm	H&B Communications	Early telephones are on display at this locally owned telecommunications company. Stop by for a brief tour of the 1920 building, refreshments, and free swag. Visitors who share a selfie and tag #bkrt2024 and #holyroodkansas with the retired phone booth on Santa Fe can collect a special gift while they're in the office.	108 N Main	785.252.4000
Holyrood	Thu-Sun	Daylight Hours	Fire Department Sign	In front of the converted grade school, now a fire department, stands a little shelter with a blond-brick base, a red bell, and a bright red sign that reads: "1901 Holyrood F.D. Chemical No. 1."	100 block of S County	

ATTRACTIONS



Ellsworth County continued

CITY	DAY(S)	HOURS	SITE	DESCRIPTION	ADDRESS	PHONE
Holyrood	Thu-Sun	Daylight Hours	Historic Cemeteries	Pick up a map/guide at the Historic 1887 Dept, 200 block N Main for a driving tour of the four historic cemeteries that surround Holyrood: Cain City, St. Peter, St. Paul, and Palacky Cemeteries. Look for the German poem, early settlers Patrick Phelan and John Corrigan, and solve the humorous epitaph written in hexadecimal code. Park on the main gravel roads.	200 N Main	785.252.3652
Holyrood	Thu-Sun	Daylight Hours	Phone Booth (Retired)	Visitors who share a selfie from Holyrood's vintage phone booth and tag #bkrt2024 and #holyroodkansan can stop by H&B during office hours (refer to H&B's listing) to collect a special gift.	110 W Santa Fe	
Holyrood	Thu-Sun	Daylight Hours	Sunflower Mural	This colorful mural greets park visitors with an array of sunflowers, wildlife, and wildflowers created from local children's fingerprints. Can you spot the park's resident fox in the mural? Located under the water tower.	100 E Olds	
Holyrood	Thu-Sun	Daylight Hours	Taxpayer Recognition	"Erected by the taxpayers of Holyrood" is etched into the bottom right corner of the 1926 red-brick city building.	112 S Main	
Holyrood	Thu-Sun	Daylight Hours	Wide Main Street	Before the automobile age, posts and stone water troughs for tying up and watering horses stood in the middle of this wide Main Street. Folks could sit along the sidewalks and visit and not be in danger of being kicked!	607 N Main	
Holyrood	Thu-Sat	See Description	Holyrood 1887 Depot	Constructed in 1887, this structure is an example of the earlier style Santa Fe depots in Kansas. One wing has been converted into a small museum that documents Holyrood's railroad and community history. Open House on Thu-Fri 2-4pm; Sat 1-4pm.	200 block N Main	785.819.1104
Holyrood	Thu-Sun	Daylight Hours	Holyrood City Park	Holyrood City Park features family-friendly amenities like a restrooms, a water bottle filler, walking trail, picnic shelters, modern playground equipment, and a splash pad (weather permitting.)	104 E Olds	785.252.3652
Kanopolis	Fri-Sun	7pm	Kanopolis Drive-In Theater	Kanopolis preserves one of the few remaining drive-in theaters in Kansas, and folks have been coming here since 1952 to watch movies under the stars. Admission: \$9 for 13 and up and \$6 for 5 to 12 years.	804 N Kansas	785.472.4786
Kanopolis	Thu-Sun	Daylight Hours	Faris Caves	From Kanopolis, 3 miles east on L, 1 mile south on 22, 1/4 mile left on M, 1 mile south (again) on 22, then west on N to the road's end. Look right toward the bottom of the bluffs and you'll see three distinct openings of the caves. Dug in the 1880s for a dwelling, they later were used by the Faris family for a spring house, generator room, and school. Caves accessible if terrain is dry.	Kanopolis	
Kanopolis	Thu-Sat	10am-4pm	Fort Harker Museum	Fort Ellsworth was established in 1864 to protect travelers enroute to Santa Fe or to Denver City. Renamed Fort Harker in 1866, it was moved to the present site of Kanopolis and became a major supply post for military campaigns against the Plains Indians. Four original Dakota sandstone buildings still stand. Re-enactment soldiers will interact with visitors from 8am to dark on Friday and Saturday. Admission charge.	303 W Ohio	785.472.5733
Kanopolis	Thu-Sun	Daylight Hours	Kanopolis Lake and State Park	From K-4, 3 miles north on K-141. The 5.5-mile Horsethief Canyon Trail is a favorite for hiking, biking, or horseback riding with its canyons, sandstone bluffs, prairie, and low-water crossings. State park entrance charge. Cabins available, reservations required.	From K-4, 3 miles north on K-141	785.546.2565
Kanopolis	Thu-Sun	Daylight Hours	Kanopolis Lake Legacy Trail Self-Guided Auto Tour	Drive through the Smoky Hills on this 80-mile trail featuring 27 historic sites— from forts and caves to cemeteries and ghost towns. Find the map at tinyurl.com/KanopolisAutoTour	Kanopolis Lake State Park	785.546.2565
Wilson	Thu-Sun	Daylight Hours	Post Rock Scenic Byway	This 18-mile drive from Wilson to Lucas, passing Wilson Lake, delivers sweeping vistas of grasslands, rock outcroppings, wildflowers and long rows of post rock fences.	Wilson	
Wilson	Thu-Sun	See Description	Atlas Ad Astra - Missile Silo Adventure Resort	A one-hour tour takes visitors down 176 feet into a decommissioned Atlas F Missile Base. This site is currently operating as an adventure resort open for camping with hiking trails, campfires and stargazing. Call 785.499.3704 to book a tour. Admission per person is \$20. Tour times are Thu-Sun 8:30am, 10:30am, 12:30pm, 2:30pm, 4:30pm, 6:30pm.	354 4th Rd	785.499.3704
Wilson	Thu-Sun	See Description	Betty Kepka Museum and Gallery	Betty Kepka became known as "The Egg Lady" when she produced Kraslice (traditional Czech painted eggs) using the old-world hand-batiking process. Her art has been exhibited across the nation and she taught the craft to keep the tradition alive. See her collection Thu-Sat 9am-6pm; Sun 10am-4pm. Open House Saturday 12-4pm.	2711 Ave E	785.656.2190
Wilson	Thu-Sun	Daylight Hours	Circular Stone Jail	Built as a water tower in 1907, this structure is the only native limestone circular jail in the state. The lower level was a jail until 1963 and held prisoners until they could be transported to the county jail. (NRHP)	Behind 2528 E in an alley between 25th and 26th	785.658.2200

*Find longer descriptions & activities arranged by day on the BKRT website.
Use written directions & online address links for finding locations.*



ATTRACTIONS



Ellsworth County continued

CITY	DAY(S)	HOURS	SITE	DESCRIPTION	ADDRESS	PHONE
Wilson	Thu-Sun	See Description	Historic Midland Railroad Hotel & The Barn	The Historic Midland Railroad Hotel, built in 1899, served as a backdrop in the 1973 film "Paper Moon". Also on the hotel grounds is The Barn, a historic structure built for race horses that has been reimagined as a new event center and community meeting place. The Barn is open Fri-Sat 5-9pm and the hotel is open 24 hours a day.	414 26th St	785.658.2284
Wilson	Thu-Sun	Daylight Hours	Lady Liberty Replica	A miniature replica of the Statue of Liberty symbolizes the story of Wilson's Czech immigrant history. Find the statue in the American Legion Park just south of the Midland Hotel.	414 26th St	
Wilson	Thu-Sun	Daylight Hours	Miniature Czech Eggs	Take a short walk to find eight miniature Czech Eggs located throughout downtown.	Downtown Wilson	620.271.2930
Wilson	Thu-Sun	Daylight Hours	Soukup and Kyner Elevators	Although no longer in use, this complex of historic grain elevators is a favorite subject for photographers. Best location to park and photograph is in parking lot at 27th and Ave F.	27th St & Ave F	
Wilson	Thu-Sun	24/7	Vintage Working Telephone Booths	Get a throwback thrill by trying out the working telephone booth at Wilson Telephone Company's office. Each of the company's seven central Kansas offices has one of these operational devices, still in service.	2504 Ave D	785.658.2111
Wilson	Thu-Sun	Daylight Hours	World's Largest Czech Egg	Thousands of volunteer hours and countless gallons of paint resulted in a giant colorful egg painted in the traditional kraslice style. The fiberglass egg weighs 7,000 pounds and measures 20x15 feet.	27th and D (Old U.S. 40)	
Wilson	Thu-Sun	Daylight Hours	WWI Monument	An American doughboy statue stands atop this monument dedicated in 1919 "In Honor of our Soldiers Sailors and Marines of the World War."	E and 26th (Legion Park)	
Wilson	Thu-Sun	Daylight Hours	Wilson Cemetery	This impressive granite Civil War monument features a Union soldier statue at its apex. Look for the metal lion's head out of which water once poured to fill the watering trough for horses.	1916 2nd	
Wilson	Thu-Sun	1-3pm	Wilson Heritage Museum	Appreciate Czech artifacts and artwork at this museum that preserves the heritage of the area. Other collections include souvenirs from local businesses, local historic records, military artifacts, school and sports memorabilia. Open 1-3pm and whenever the open flags are out.	411 24th St	785.420.0771
Wilson	Thu-Sun	Daylight Hours	Lustron Home	The buttery yellow Lustron home is one of only 91 of the approximately 100 prefabricated steel homes built in Kansas. After WWII, housing needs expedited the building of these low maintenance, highly durable homes. Drive by only.	2315 C	
Wilson	Thu-Sun	Daylight Hours	Wilson Opera House	See the how the reconstruction of the historic Wilson Opera House is progressing. It will feature an open-air pavilion with both outdoor and indoor stages. The limestone from the building that survived a 2009 fire will be incorporated into the pavilion.	27th and D (Old U.S. 40)	785.658.6091

*Find longer descriptions & activities arranged by day on the BKRT website.
Use written directions & online address links for finding locations.*

Longhorn Roundup
Scavenger Hunt May 2 – May 4
**Details in Events Calendar*

JH ROBBINS MEMORIAL
LIBRARY

219 N. Lincoln
Ellsworth, Ks. 67439
Ellsworthlib.org

Library Hours: Mon-Fri. 10am – 6pm
Sat. 10am – 2pm
Sun. CLOSED

Welcome to
ELLSWORTH COUNTY

ellsworth • kanopolis • wilson • holyrood • lorraine

grow **explore**

ATTRACTIONS

Lincoln County



CITY	DAY(S)	HOURS	SITE	DESCRIPTION	ADDRESS	PHONE
Barnard	Thu-Sun	Daylight Hours	Gurley Marsh	The Gurley Marsh is a 160-acre natural wetland located in northern Lincoln County, 1/2 mile north of the K-14 and K-284 intersection. From Barnard, 6 miles west on K-284 and 3/4 mile north on K-14. The area is home to a variety of wildlife of all sizes and excellent for bird-watching. Find the pull-off stop along the highway to get a closer look.	From Barnard	785.524.8954
Barnard	Thu-Sat	8am-6pm	The Cookbook House	Barb Rathbun's passion for collecting cookbooks over a period of many years resulted in the transformation of a small home into a museum of almost 9,000 cookbooks. Stop by! She'd love to share them with you.	229 White St	785.792.6256
Beverly	Thu-Sun	Daylight Hours	County Line School	Built in 1920, this red-brick, one-room schoolhouse gets its name from sitting right on the Ottawa/Lincoln County line. From Beverly, 2 miles east on K-18, then 1/4 mile north on N 310 Rd. Private property, drive by only.	From Beverly	
Beverly	Thu-Sun	24/7	Scenic Drive - Beverly/ Barnard	Enjoy the best of the Smoky Hills with this 12-mile gravel road drive. From Beverly, go west on K-18 a 1/2 mile then turn north on 280th Rd and drive for 7 miles. Road curves west on Sage Rd for 1 mile then curves north again on 270th Rd. Drive north 4 miles. Road intersects with Wheat Drive, a blacktop road. Barnard is 2 miles to the west. From Barnard, drive 2 miles east on county blacktop road Wheat Drive. Turn south at 270th Rd for 4 miles. Road curves east on Sage Rd for 1 mile then curves south again on 280th Rd. Drive south 7 miles until meeting K-18. Beverly is 1/2 mile east.	From Beverly	785.524.4934
Denmark	Thu-Sun	Daylight Hours	Denmark Indian Raid Monument	The first Danish immigrants arrived along the banks of the Spillman Creek in 1869, and nearly all of them lost their lives in an Indian raid in May of that year. Many Denmark area residents are descendants of those early settlers, four and five generations later. A monument to the raid was erected in 2019. From K-18, 2 miles north on 120th Rd.	Denmark	785.524.8954
Denmark	Thu-Sun	Daylight Hours	Denmark Lutheran Church & Denmark Hall	Originally named the Dansk Evangelical Lutheran Kirke, the 1878 native limestone church sits on top a hill overlooking the Spillman Creek Valley. (NRHP) On Saturday, May 4, 9am-1pm, the church and hall will be open along with other Denmark sites. Learn about aebelskiver by watching locals demonstrate how to make the Danish pancakes. (See Events page for more information.) From Lincoln, 7 miles west on K-18, then 3 miles north on 120th Rd via a winding gravel road.	Denmark	
Denmark	Thu-Sun	Daylight Hours	Scenic Drive - I-70/ Vesper/Denmark	Go back in time through the Saline River Valley, starting at I-70 with modern wind technology and ending in historic Denmark. Along the way see historic limestone fence rows, farmsteads, and incredible views. From I-70, take exit 216 and go north on 12th Rd. 12th will change to 120th Rd after E. Ash Dr. Vesper is 13 miles north of I-70. Denmark is 3.5 miles north of Vesper.	From I-70, exit 216	785.524.4934
Lincoln	Thu-Sun	Daylight Hours	Abram Marker	Abram, the original county seat decided by election in 1871, moved to Lincoln Center in 1872 after a second election... and a murder. From Lincoln, 1 mile east on K-18, then 1/2 mile south on 210 Rd, then 1/4 mile east on Kale Dr. Find the marker on the north side of the road. Marker is 1/4 walk in pasture. Private property, stay on mowed path only.	Rural Lincoln	785.524.8954
Lincoln	Thu-Sun	Daylight Hours	Achterberg Wildlife-Friendly Demonstration Farm Nature Trail	Take a stroll along the one-mile hiking trail along Bullfoot Creek to see wildflowers, birds, and ruins of the original Achterberg homestead, now cared for by Audubon of Kansas. See event listing for several opportunities to enjoy bird-watching and the dark night sky. From Lincoln, drive west on K-18 for 2 miles to 170th Rd. Turn south for approximately 4 miles to trail head sign.	950 N 170th Rd	785.537.4385
Lincoln	Thu-Sun	Daylight Hours	BKRT Gravel Cycling Routes	Experience the BKRT and Post Rock Country on a bike. Gravel roads offer riders beautiful rolling hills, big skies, and scenic views for miles. Locals have outlined a few routes ranging from short trips to 50+ miles. See event listing for an evening ride with locals on Thursday, May 2. tinyurl.com/LincolnGravel	Lincoln County	785.524.8954
Lincoln	Thu-Sun	Daylight Hours	Bridges of Lincoln County	Until the 1930's and 1940's, locally quarried limestone was the primary building material for everything from fence rows to buildings to bridges. Several limestone arched bridges remain to this day, some under open roads, some no longer supporting daily traffic, but all are worth a drive to appreciate their simple beauty. For directions: tinyurl.com/LincolnBridges	Lincoln County	785.524.8954
Lincoln	Thu-Sat	See Description	Crispin's Drug Store Museum	This recreation of an old-time drug store has a fascinating collection of pharmaceutical artifacts from the 1880s to 1920s including prescription bottles and containers, druggist tools, and a "shock box". Thu-Fri 1-5pm; Sat 10am-12pm and 1-5pm; Sun 1-5pm. (Closed during lunch)	161 E Lincoln Ave	785.524.5383
Lincoln	Thu-Sun	Daylight Hours	Downtown Historic District	Designated on the National Register of Historic Places in 2020, two-thirds of the downtown was built between 1881 and 1920 in architectural styles ranging from Victorian, Italianate, to Commercial, making extensive use of native limestone.	100 W Lincoln Ave	785.524.8954
Lincoln	Fri-Sun	See Description	Finch Theatre	The Finch Theatre was a long-vacant building lovingly renovated by community volunteers into a modern movie theatre and events venue. Fri-Sat 7pm; Sun 3pm. See website for movie being shown during the BKRT.	122 E Lincoln Ave	785.524.4350

***Find longer descriptions & activities arranged by day on the BKRT website.
Use written directions & online address links for finding locations.***



ATTRACTIONS



Lincoln County continued

CITY	DAY(S)	HOURS	SITE	DESCRIPTION	ADDRESS	PHONE
Lincoln	Thu-Fri	8:30am-4:30pm	Indoor Mural - Citizens State Bank	Featured in the lobby of the bank, this multi-panel mural by artist Julia Bland depicts local people, homes, barns, limestone fence posts, livestock, and wildlife. Open during business hours on Thursday and Friday.	100 W Lincoln Ave	785.524.4840
Lincoln	Thu-Sun	24/7	KANcycle: Bike Sharing for Rural Kansas	KANcycle is a rural bike share program. Ride bikes for free during the BKRT using the Movatic app. Pick up and return bikes at the Courthouse Square.	216 E Lincoln Ave	785.826.1583
Lincoln	Thu-Sat	See Description	Lincoln Art Center	Stop in the Lincoln Art Center to view unique work from Kansas and midwest artists displayed in an appealing open space. A gift gallery features products by Kansas artists. Tue-Fri 12-4pm; Sat 9am-12pm. (NRHP historic district)	126 E Lincoln Ave	785.524.3241
Lincoln	Thu-Sat	See Description	Lincoln Carnegie Library	Built in 1914, the Lincoln Carnegie Library is one of 59 libraries built in Kansas by philanthropist Andrew Carnegie. Today, it is just one of 25 still in use for that purpose. Mon-Fri 10am-1pm; 2-6pm; Sat 9am-1pm (NRHP)	203 S 3rd	785.524.4034
Lincoln	Thu-Sun	Daylight Hours	Lincoln Cemetery	Take the main cemetery entrance to the second crossroad. Just in front of the limestone mausoleum stands the gravestone for a Civil War drummer boy. Continue to the end of that driveway, turn east on South, then north at the next crossroad. The first gravestone on the west side is shaped like a suitcase and marks the 1891 grave of a traveling salesman. An epitaph reads, "Here Is Where He Stopped Last."	K-18 and E Lincoln Ave	
Lincoln	Thu-Sun	Daylight Hours	Lincoln City Park	Go ahead and give the big cottonwood tree a hug - it's one of the largest in the state! Play a round of disc golf or visit the limestone structures made by the National Youth Administration in the 1930s including the Scout Cabin, picnic tables, a shelter, and an amphitheater. (NRHP)	E Lincoln Ave	
Lincoln	Thu-Fri	8am-4:30pm	Lincoln County Courthouse	This Romanesque Revival courthouse was built in 1900 using native limestone to achieve a striking result. A 1913 Civil War statue of a soldier at parade rest stands to the southeast of the courthouse. (NRHP)	216 E Lincoln Ave	785.524.4757
Lincoln	Thu-Sat	10am-5pm	Lincoln County Historical Museum/ Kyne House Museum	You can't miss the wagon wheels that accent the exterior of the Kyne House. As one of the first limestone homes built in the county, this native limestone museum tells the story of Lincoln County's development. Entrance through the Lincoln County Historical Museum Complex. Admittance by donation. (NRHP)	216 W Lincoln Ave	785.524.9997
Lincoln	Thu-Sun	Daylight Hours	Lincoln Golf Course	This is one of the best 9-hole sand green courses in the state, featuring an undulating layout with both uphill and downhill fairways and elevated tee-boxes.	2058 E Milo	785.658.5581
Lincoln	Thu-Sat	See Description	Marshall-Yohe House	The three-story 1895 Queen Anne-style Victorian wood-framed house sits on a rustic native limestone foundation. The interior features Lincrusta wainscoting, a stained-glass stairway leading to the second floor and original furnishings. Visit the house during Pie on the Porch, Thursday from 3-5pm, or ask at the Lincoln County Historical Museum about tours. (NRHP)	316 S 2nd	785.524.9997
Lincoln	Thu-Sun	Daylight Hours	McReynolds Park & Saline River Dam	Donated to the county in 2021, volunteers have been working to improve the four acres around the Saline River dam as a family-friendly fishing hole. 1/4 mile south of Lincoln on K-14, park entrance immediately south of the Saline River bridge, west side of the highway.	From Lincoln	785.524.8954
Lincoln	Thu-Sun	Daylight Hours	Moffitt Site	As pioneers moved west to settle the frontier, there were clashes between Native Americans and settlers. The site marks one of those clashes in 1864. From Lincoln, 1 mile east on K-18, then 1/2 mile south on 210 Rd, then 1/2 mile east on Kale Dr. About 1/4 mile east of the Abram Marker on the north side. Private property. Stay on mowed paths only.	Rural Lincoln	785.524.8954
Lincoln	Thu-Sun	Daylight Hours	Murals of Lincoln County	Colorful outdoor murals are found in almost every community in Lincoln County. Visit Lincoln, Sylvan Grove, Barnard, Beverly, Vesper, or Westfall to check out the inspiring public art installations. Go to: tinyurl.com/LincolnMurals	Lincoln County	785.524.8954
Lincoln	Thu-Sun	Daylight Hours	Open Range Zoo	Keep your eyes open for creatures dotting the highways as part of local artist Jim Dickerman's Open Range Zoo. The creatures are made from old farm equipment, car parts, scrap metal, animal bones and feathers, driftwood, limestone, antlers and more. Look for the creatures perched on the tops of fence posts and billboards, tucked between tree groves and bushes, nestled on rock outcroppings, and at the Grassroots Arts Center in Lucas.	Along K-18 between Beverly and Lincoln, around Lincoln, and south end of Lincoln	
Lincoln	Thu-Sun	Daylight Hours	Post Rock Scenic Byway	The Post Rock Scenic Byway is an 18-mile route that extends north and south on K-232 through the Smoky Hills of Ellsworth, Lincoln and Russell Counties. The byway offers scenic, recreational, geological and agricultural viewing opportunities. In 1989, Senate Resolution No. 1854 designated Lincoln County the "Post Rock Capital of Kansas."	K-232, Lincoln County	
Lincoln	Thu-Sat	See Description	Post Rock Scout Museum	View artifacts of scouting organizations such as Girl Scouts, Boy Scouts, Pioneer Girls, Campfire Girls and other youth organizations at this museum. Thu-Fri 1-5pm; Sat 10am-12pm and 1-5pm; Sun 1-5pm. (Closed during lunch)	161 E Lincoln Ave	785.524.5383
Lincoln	Thu-Sat	10am-4pm	United Methodist Church Stained Glass	The first record of a Methodist sermon in the county was in 1871, before Lincoln was even established as a county seat. Visit the church built in 1915 that's still used today to see 44 stained glass windows including a beautiful dome skylight.	216 N 4th St	785.524.4119

ATTRACTIONS



Lincoln County continued

CITY	DAY(S)	HOURS	SITE	DESCRIPTION	ADDRESS	PHONE
Sylvan Grove	Thu-Sun	Daylight Hours	Downtown Historic District	Designated on the Register of Historic Kansas Places in 2020, the native Post Rock limestone buildings represent the community's development since 1887. Several buildings have undergone extensive rehabilitation including Fly Boy Brewery & Eats and the Farmers Elevator Coop.	100 N Main	785.524.8954
Sylvan Grove	Fri-Sat	See Description	Evangelical Lutheran School	Built in 1913 in the Prairie School style, the school first served many of the area's German Lutheran immigrants. The Bethlehem Lutheran Church has been preserving the building and has restored a replica of the original classroom. Visit the school and enjoy peach cobbler served by volunteers on Fri 1-5pm; Sat 10am-5pm. (NRHP)	308 N Indiana	785.524.6034
Sylvan Grove	Thu-Sun	Daylight Hours	Scenic Drive – Sylvan Grove to the Post Rock Scenic Byway	See a sampling of Post Rock Country's limestone structures, including a one-room school house, a four-arch bridge, and a homestead house along this short seven-mile gravel route connecting Sylvan Grove to the Post Rock Scenic Byway. Directions at tinyurl.com/SylvanDrive	Sylvan Grove	
Sylvan Grove	Thu-Sun	Daylight Hours	South Fork Spillman Creek Bridge	The Sylvan Historical Society maintains a small roadside park and gazebo at the site of this unique double-arched bridge built in 1908 from local greenhorn "post rock" limestone over the Spillman Creek. From K-18, 8 miles north on K-181. See the Bridges of Lincoln County listing for another stone bridge nearby on Sage Rd. (NRHP)	From Sylvan Grove	
Sylvan Grove	Thu-Sat	9am-3pm	The Warehouse/ Farmers Elevator Co.	In years past, this limestone building was the hub of ag commerce in Sylvan Grove. Today the building is home to a committed group of senior citizens who are repurposing it as the town's unique Senior Center. Enjoy coffee, lemonade, and cookies while visiting with the members about this creative enterprise. Listed on the Register of Historic Kansas Places.	129 S Main	785.404.9759
Sylvan Grove	Thu-Sat	See Description	Union Pacific Railroad Depot	Constructed by the Union Pacific Depot in 1887 as part of the "Plainville Line", the extensively renovated depot features a waiting room, agent's office and freight room. The depot is now a museum displaying railroad memorabilia and antique farm equipment. (NRHP) Thu 5-7pm; Fri 12-7pm; Sat 9am-5pm	131 S Main	785.658.5779
Sylvan Grove	Fri-Sat	See Description	Yesterday House Museum	The Yesterday House Museum displays highlight events, commerce, artifacts, and people related to the 148-year history of Sylvan Grove. A new annex features a display of antique farm machinery and related items. Listed on the Register of Historic Kansas Places. Fri 12-7pm; Sat 9am-5pm	126 N Main	785.658.5339
Vesper	Thu-Sun	Daylight Hours	Outdoor mural	This large outdoor mural features images of Lincoln County, including the heritage of wind energy, limestone Vesper school, post rock, local scenery, and the Kansas flag, was originally designed by county native Hazel Avery. Mural artist Matthew Miller will be available at the Vesper Community Center for a meet and greet from on Saturday from 6-7pm.	Community Center, 1247 N 120th Rd	785.615.1048

*Find longer descriptions & activities arranged by day on the BKRT website.
Use written directions & online address links for finding locations.*

Family owned in Sylvan Grove, Kansas!

LABERTEW APIARIES

LABERTEW HONEY

118 N MAIN ST. SYLVAN GROVE, KS

RAW HONEY PRODUCED AND BOTTLED IN NORTH CENTRAL KANSAS.

Family Owned - Locally Grown - Kansas Proud!

RENT VESPER
for your next event!

Great for wedding receptions!
Day & weekend rentals.
Stage for band & kitchen.
Seats up to 250+ circa 4800 sq. ft.

WWW.VESPERCG.ORG



ATTRACTIONS



City of Lucas

CITY	DAY(S)	HOURS	SITE	DESCRIPTION	ADDRESS	PHONE
Lucas	Thu-Sun	Daylight Hours	Barbara McCreery's "One Window Gallery"	Barbara McCreery creates stunning dioramas and story boxes from found objects and sequins. Look for the sidewalk on the south side of her very pink house leading to her "One Window Gallery," where you will see one of her stunning and whimsical creations.	132 S Fairview	785.639.4636
Lucas	Thu-Sun	9am-5pm	Bowl Plaza	Mosaics of colorful tiles and glass, toy cars, dominoes, badges, wine corks, and more adorn the walls for your viewing pleasure while you're "resting" at this artistic and award-winning public restroom.	121 S Main	785.525.6118
Lucas	Thu-Sun	Daylight Hours	Czech Heritage Mural	In a mural covering the entire wall south of Brant's, artist Erika Nelson has cleverly illustrated the early uses of native greenhorn limestone by Czech immigrants to this area.	100 Blk Main	
Lucas	Thu-Sun	See Description	Da Da Museum Art Gallery	If you're lucky enough to find Alan Vopat's gallery open, you'll see how he uses alphabet letters to form faces, bodies, objects, and much more. See his artwork at Switchgrass Studio as well.	104 S Main	785.404.2637
Lucas	Thu-Sun	9am-4pm	Dew Dat Den	Originally an art deco service station in the 1930s, Dew Dat Den is now the studio of Rob Lindsay. Located near Main St, the yard features various large sculptures. Drive by.	218 W 1st	703.864.5293
Lucas	Thu-Sun	Daylight Hours	Faces in the Stone	Three "face posts"- limestone fence posts carved with faces - can be found in Lucas along highway K-232 south of Lucas. A fourth one is found on K-18 highway just east of Lucas. For a list, stop by the Grassroots Art Center in Lucas or online at tinyurl.com/LucasStoneFaces	On K-232 and K-18 between Wilson Lake Dam and Lucas	785.525.6118
Lucas	Thu-Sun	See Description	Florence Deeble's Sculpture Rock Garden and the Deeble House - Mri Pilar's Garden of Isis	Local schoolteacher Florence Deeble used colored concrete and rocks to design postcards in her backyard of her favorite vacation sites. Deeble's house is now a gallery for artist Mri-Pilar with walls and ceilings wrapped in silver insulation, and rooms filled with Pilar's sculptures of recycled products inspired by the Goddess Isis. The garden and house are part of the Grassroots Art Center tour. Admission charge. Thu-Sat 10am-5pm; Sun 1-5pm	126 S Fairview	785.525.6118
Lucas	Thu-Sun	Daylight Hours	Fork Art Park	A series of artistic outdoor fork sculptures by local artist Mri-Pilar are a favorite photo-op for visitors. Just south of the park are large metal sculptures of self-taught recycled artist Jim Dickerman.	119 S Main	
Lucas	Thu-Sun	Daylight Hours	Fox Still Sculptures	Raymond Fox Still's outdoor styrofoam sculpture are being restored and placed throughout town. Fox was known for his unique archery targets including the Saber-Toothed Tiger, Energizer Bunny and a 15-foot tall T-Rex! Lacie Austin of Lucas has restored these fabulous animals that are located along the downtown Main Street of Lucas.	Downtown Lucas	785.525.6118
Lucas	Thu-Sun	10am-5pm	Garden of Eden	S.P. Dinsmoor built his 11-room limestone and concrete log cabin home and Garden of Eden sculptures from 1907 to 1929 using 113 tons of cement and goodness knows how many tons of limestone! The sculptures are Dinsmoor's interpretation of the Bible, Populist politics, and modern civilization. He is laid to rest in a handmade, glass-topped concrete coffin inside the limestone mausoleum. Exterior sculptures are available after hours for self-tours. Admission charge. (NRHP)	305 E 2nd	785.525.6395
Lucas	Thu-Sun	See Description	Grassroots Art Center	The Grassroots Art Center preserves, documents, and exhibits grassroots and outsider artists from around the Midwest. It features three galleries, gift area, historic post rock court yard, artistic public restrooms and two art environments (Deeble Rock Garden and Mri Pilar's Garden of Isis). Admission charge. \$1 coupons available for BKRT participants. Thu-Sat 10am-5pm; Sun 1-5pm	213 S Main	785.525.6118
Lucas	Thu-Sun	Daylight Hours	Limestone Jail	When you have lots of limestone to use for building structures, why not build a jail? That's what the community did in 1902 and it's still standing today. Another quirky place in Lucas for a selfie!	118 W 2nd	
Lucas	Thu-Sat	8am-5pm	Lucas City & Newspaper History Display	Learn about the history of Lucas and see print shop machines nearly 100 years old and still in operation today.	203 S Main	785.525.6288
Lucas	Thu-Sun	24/7	Lucas City Park	Pack a picnic and enjoy this nice city park, which has modern playground equipment for kids to run off some energy.	306 Parkview Rd	785.525.6288

*Find longer descriptions & activities arranged by day on the BKRT website.
Use written directions & online address links for finding locations.*

ATTRACTIONS

City of Lucas continued

CITY	DAY(S)	HOURS	SITE	DESCRIPTION	ADDRESS	PHONE
Lucas	Sat-Sun	See Description	Lucas Community Theater	This renovated theatre is community-owned and run by volunteers. First-run movies are shown Saturday, 7pm and Sunday, 5pm. (Check the Events section for special activities planned for BKRT visitors.)	116 S Main	785.525.7747
Lucas	Thu-Sat	9am-5pm	Lucas Public Library	The newly renovated library building offers books and other reading materials, videos, public computers, free wifi, charging station, and relaxed atmosphere, complete with a kids room with Legos and train table.	135 S Main	785.525.6305
Lucas	Thu-Sun	Daylight Hours	M.T. Liggett Metal Sculpture	M. T. Liggett was a self-taught, Kansas grassroots metal artist from Mullinville who donated several metal totems to the Grassroots Art Center. These sculptures along Harvest Road depict mythology, political and social commentary. The metal discs were painted by Luray artist Tess Dunkel McKnight.	E Harvest St	
Lucas	Thu-Sun	Daylight Hours	Main Street Pole Art	The Grassroots Art Center sponsored a contest for ideas to embellish Main Street light poles. The selected artists created and installed their pole art along the two blocks of Main Street. Look for flying fish, a red dragon head, wheat, mosaic diver, steam punk tractor, metal cow heads, sticks, serpents and more.	Downtown Lucas	
Lucas	Thu-Sun	Daylight Hours	Miller's Park	Roy and Clara Miller collected rocks and shells during their 1930s-1960s travels and transformed them into miniature Lucas buildings. The stand-alone towers they made from slag glass and barite roses. Admire from behind the fence. Located just east of the Garden of Eden. See Event listings for tour info during the BKRT.	2nd and Greely	
Lucas	Thu-Sun	Daylight Hours	Old Blue Studio and Proving Ground	Old Blue Studio, a former tractor shop, is now home to Matthew Dominic Farley's art practice. Find the bold, graphic, wraparound mural inspired by both the building's and artist's lineages. Adjoining the studio is a budding sculpture garden, the Proving Ground, with an evolving collection of artworks in various stages of development. Drive or walk-by only.	106 S Main	785.218.8489
Lucas	Thu-Sun	24/7	Outdoor Mural	Look for a new mural on the south side of the Lucas Library. The literary themed mural was painted in just eight days by Kansas artists in 2023.	135 S Main	
Lucas	Thu-Sun	Daylight Hours	Post Rock Scenic Byway	The 20 mile long Post Rock Scenic Byway runs along K-232, across the Wilson Lake Dam, from Lucas to Wilson in central Kansas. The byway showcases the native limestone fence posts and farmsteads built by the early settlers.	K-232, Lucas to Wilson	785.525.6288
Lucas	Thu-Sun	9am-5pm	Standing Dog Studio & Gallery	The old Ford dealership on Main Street is now Standing Dog Studio. LeAnne Doljac's gallery is filled with weird and wonderful art: torch cut metals, ceramics, mosaics, paintings, hand dyed fabrics and more. Purchase quirky art or grab free snacks.	107 S Main	913.963.6582
Lucas	Thu-Sun	Daylight Hours	Wilson Lake & State Park	Surrounded by the grasslands of post rock country, this clear lake provides a variety of recreational opportunities. Hike the 2.5-mile loop at the Rocktown Natural Area or bike the the 21-mile Switchgrass Trail. Knotheads Bait & Tackle Shop, on the east side of South Shore, has fishing gear and kayak rentals.	From I-70, 5 miles north on K-232	785.658.2465
Lucas	Thu-Sun	Daylight Hours	World's Largest Souvenir Travel Plate	Honoring the multiple Outsider Art environments that have flourished in Lucas since the early 1900s, Erika Nelson's World's Largest Souvenir Travel Plate depicts those environments alongside a visual history of the town.	From K-18 Cafe, just east on K-18	
Lucas	Thu-Sun	10am-5pm	World's Largest Things Roadside Sideshow Expo	The World's Largest Thing's Roadside Sideshow Expo is home to the World's Largest Collection of the World's Smallest Versions of the World's Largest Things. The colorful mural above the awning hints at the wonders inside the downtown exhibition space. Souvenir vending located inside!	214 S Main	785.760.0826

*Find longer descriptions & activities arranged by day on the BKRT website.
Use written directions & online address links for finding locations.*

Those who work in libraries, historic theaters, museums, art galleries, and, well, just about any business or organization in these BKRT towns could use a pat on the back or a friendly word and will enjoy conversations with you.

PAT ON THE BACK





EVENTS

Ellsworth County

CITY	DAY(S)	TIME	EVENT	DESCRIPTION	ADDRESS	PHONE
Ellsworth	Thu-Sun	See Description	Bourbon Tasting/ Education in an Underground Speakeasy	Discover and taste unique whiskeys and bourbon from around the world at a handcrafted bar in an underground speakeasy. This 1877 building was part of an underground network of tunnels. Reservations are recommended, call 785.201.9726. Enter in the alley behind 210 N. Douglas, Ellsworth. Cost \$35 (must be 21). Seatings every 30 minutes on the hour and half hour. Thu-Sat 10am-6pm; Sun 12-5pm	210 N Douglas Ave	785.201.9726
Ellsworth	Fri	9:30am-12pm	Cattle Branding at the Bar J Ranch	Watch cowboys brand calves, rope cattle, learn about how they take care of their livestock, and ask questions about beef cattle production. In case of rain, event will be cancelled. Directions: From Hwy 156 and Hwy 14 intersection, travel 6 miles south on Hwy 14 to Ave Q. At Ave Q turn right. Travel 1 mile west on Ave Q. At the intersection of Avenue Q and 15th Road turn left. Travel 1.5 miles south on 15th Road until you reach the ranch. (Address listed will not work if Google mapped. Use written directions.)	1506 Ave R	785.531.1833
Ellsworth	Thu	10am-12pm	Ellsworth County Museum & Hodgden House Open House	The museum complex is on the two-block site of the original commercial district. It features the 1878 Victorian Hodgden House and the 1886 livery stable—both constructed with Dakota sandstone. Come in and look around for no charge during this open house. (NRHP)	104 W South Main	785.472.3059
Ellsworth	Thu-Sat	See Description	Cowtown Scavenger Hunt	Learn about the history behind Ellsworth the Cow Town with a walking tour and scavenger hunt of downtown Ellsworth. Pick up a list at Refine Design, Inc., 119 N. Douglas, Thu-Fri 10am-6pm; Sat 9am-3pm. Free prize for completed forms.	Ellsworth	785.461.3131
Ellsworth	Thu	9-10am	Documentary & Author Talk with Mildred Schindler Janzen	As a teenager, Mildred Schindler Janzen escaped both Nazi Germany and the invading Russian troops. A 20-minute documentary based on her memoir, <i>Surviving Hitler, Evading Stalin</i> , will be shown and Mildred will be available to answer questions. Event takes place at the Ellsworth Library basement.	219 N Lincoln	785.531.0509
Ellsworth	Sat	7am-11pm	Legionfest	"May the 4th Be With You" is the theme for this year's annual event hosted by the local American Legion Post. Craft and food vendors, kids games, music and more at this day-long festival. A hog roast dinner starts at 5pm. Check the Facebook page for more information.	645 W 15th St	785.810.8291
Ellsworth	Thu-Sat	See Description	Longhorn Roundup - Scavenger Hunt	Scavenger hunters will visit designated businesses to find longhorn cattle. Turn completed maps into the library to enter a drawing for prizes. Thu-Fri 10am-6pm; Sat 10am-2pm	Ellsworth	785.472.3969
Ellsworth	Fri	2-3pm	MaiCo Industries	Take a tour of a steel fabrication facility that specializes in poles, towers, bridge girders and large, open-span buildings such as professional sports facilities. MaiCo is one of the first Kansas based businesses to receive certification as "Made In Kansas." Tour will last approximately 45-60 minutes.	936 N Hwy 14	785.472.5390
Ellsworth	Fri	11am-12pm	Mushroom State Park Ranger Chat	Kansas Department of Wildlife and Parks Ranger Wendy Bowles will describe the unique stone structures of Mushroom Rock State Park. This is a great photo op. Located on the Prairie Trail Scenic Byway northwest of Marquette about 5 miles north of Kanopolis Reservoir and State Park, 3 miles west of K-141 on Avenue K, a county road or south of K-140 from Carneiro on 25th Road. Mushroom Rock State Park is one of the top 8 Wonders of Kansas - Geography.	Mushroom State Park, Ave K	785.546.2565
Ellsworth	Fri-Sat	8pm-1am	Nuclear Missile Silo Evening Celebration with Bonfire, Music and Libations	Enjoy a celestial celebration at this nuclear missile with a bonfire, music, and adult beverages. \$50 per person, includes coffee mug and unlimited beers, wines, sodas, and waters. Bring your own snacks and food. From Ellsworth go east for 10 miles on J Road (becomes K-140) and turn north on either 23rd Road or 25th Road. Follow the signs. (Overnight Camping Available—see bigkansasroadtrip.com/lodging)	2432 Ave I	785.201.9726
Holyrood	Thu-Sat	12-5pm	Fire Department Tour	Rural Fire Departments depend upon cooperation and volunteers to cover a wide territory. Visit with some of this department's 18 volunteers and chief of 35+ years, Mark Bredford. See vehicles up close and hear the stories of how communities work together when danger looms.	102 S County Rd	785.252.7133
Holyrood	Fri	See Description	Old Time Bingo & Sandwich Supper	Try your luck winning a prize at the American Legion's come-and-go bingo game from 3-5pm. Purchase beverages during the games or enjoy a sandwich supper (freewill donation) from 5-6:30pm. Bingo cards \$0.50/game. Event located at the American Legion Community Center.	416 N Main	785.252.7258
Holyrood	Sat	1-4pm	Pickin' and Pie at the Depot	Join in the fun at the historic Holyrood Depot's freight dock for an outdoor acoustic folk music jam circle featuring area musicians. Bring your lawn chair and enjoy a piece of pie while listening...and if you are a picker, bring an instrument and play along! Donations welcome.	115 N Main	785.819.1104
Holyrood	Thu-Sat	See Description	Quilt and Craft Show	Shop locally made handicrafts and enjoy an exhibit of modern and antique quilts, some for sale, by local quiltmakers. Cash, checks and credit cards accepted. Event held at St. Peter Lutheran Church Parish Hall. Accessible entrances and restrooms. Thu 1-5pm; Fri-Sat 9am-5pm	209 S County Rd	785.252.7069

EVENTS



Ellsworth County continued

CITY	DAY(S)	TIME	EVENT	DESCRIPTION	ADDRESS	PHONE
Holyrood	Thu-Sat	9am-4pm	Revitalization of Progress School	The beautiful stone Progress School was built in 1902 and is now being converted into a solar- and wind-powered home by Ted and Carrie Schmid, who will have fish ponds to provide fertilizer for an in-ground greenhouse; produce their own milk, eggs, poultry and more. Stop by for conversation and historical pictures and take a tour if time allows. Coffee and refreshments.	1401 5th Rd	785.252.3237
Holyrood	Thu-Fri	11am-1pm	What Does That Machine Do?	Meet the fifth-generation operator of a Farm Bureau and Salina Diocese-designated Century Farm, Ernie Jezek. See a cattle/grain operation and learn about the functions of various farm implements. From Holyrood, Hwy 156 and Ave T, about one mile west on Ave T, turn right (north) on 4th Rd for 3 1/2 miles. Farm is on the left (west side).	1646 4th Rd	785.252.8041
Kanopolis	Fri-Sat	See Description	Fort Ellsworth Site / Tours	From downtown Kanopolis, 1/2 mile west on Ohio (becomes L), then 1 mile south on 18th. Fort Ellsworth, later renamed Fort Harker, was a primitive post originally of earthen dugouts dug into the bank of the Smoky Hill River. Depressions are visible as well as a remnant of the Smoky Hill Trail, used by the Butterfield's Overland Despatch stage company. Historian Jim Gray will be on site Friday and Saturday from 12-3pm for 30-minute tours, including a 10-minute walk.	Kanopolis	785.531.2058
Kanopolis	Fri	1-3pm	Fort Harker Open House	Tour the Commanding Officers Quarters, the Junior Officers Quarters, the Kanopolis Depot (displays include Independent Salt, the Acme Brick Plant and Kanopolis High School) and the Fort Harker Guardhouse. The Guardhouse tour will include historical information relating to the Civil War and the trails westward. Admission free.	309 W Ohio	785.472.5733
Kanopolis	Fri-Sat	8am-8pm	Fort Harker Soldier Encampment	Visit an encampment of soldiers from the Forts that defended the way West in the 1860-1880s. The reenactors will share stories of their way of life and their adventures on the Plains. Wander through the camp on the grounds of the Fort Harker Commanding Officers Quarters in Kanopolis.	108 W Ohio	785.472.5733
Kanopolis	Thu	2-3pm	Horse Thief Canyon Ranger Chat	Meet KDWP Ranger Wendy Bowles at the Kanopolis Lake office (GPS location: 200 Horsethief Road) and all will travel to Horse Thief Canyon. The group will view the Native American petroglyphs and the splendor of nature's rock formations and canyon walls.	200 Horsethief Rd	785.546.2565
Wilson	Thu-Sun	See Description	Atlas Ad Astra - Missile Silo Tour	A one-hour tour takes visitors down 176 feet into a decommissioned Atlas F Missile Base. This site is currently operating as an adventure resort open for camping with hiking trails, campfires and stargazing. Call 785.499.3704 to book a tour. Admission per person is \$20. Tour times are Thu-Sun 8:30am, 10:30am, 12:30pm, 2:30pm, 4:30pm, 6:30pm	354 4th Rd	785.499.3704
Wilson	Sat	12-4pm	Betty "Kepka" Belton Museum Open House	Join us to view the great work of the late Betty Kepka featuring original artwork and hand-painted Czech Eggs. Local artist Christine Slechta will demonstrate the process of hand painting Czech Eggs!	2711 Ave E	785.658.2284
Wilson	Sat	7-10pm	Big Band Music & Swing Dancing	Kick back with a fun evening on the patio at The Historic Midland Railroad Hotel with Big Band music and swing dancing.	414 26th St	785.658.2284
Wilson	Fri-Sat	10am-2pm	"Cool Factor" into a Historic Building	This historic native sandstone building, built in 1886 as the Bohemian State Bank, will be open for 15-minute tours on Friday and Saturday. The bank was featured in scenes for the movies, "Paper Moon" and "Pretty Boy Floyd." See the sharpshooter perch that was used to defer bank robbers and learn about the "cool factor" in how the building has been repurposed to house the local summer lunch program.	2505 Ave E	785.658.7516
Wilson	Sat	11am	Czech Dancers	"Czech" out our Czech dancers by the big egg! The group of youth ages 3-18 was established to help promote and continue the Czech culture through music and dance. In the event of rain, the dancers will perform at the Wilson American Legion Post 262, 419 27th St.	Corner of Ave D and Old 40, (by the World's Largest Czech Egg)	785.531.9096
Wilson	Thu-Sun	Daylight Hours	Czech Quest	Pick up a "Czech Quest" brochure for this scavenger hunt at the Kiosk next to the Wilson Visitor Center. See places of history and community highlights. See brochure for directions for returning the completed form.	Ave E & 27th St	785.658.7516
Wilson	Sat	9am-12pm	DAR Bake Sale	DAR Smoky Hill Chapter members will have their annual bake sale to raise money for local scholarships. Home-baked breads, pastries, and other sweets will be available for sale.	419 27th St	785.531.9096
Wilson	Fri	12-4pm	From Historic to Modern... Welcome to CoWork Space!	View this new addition to Wilson! 2711 Co Working is operated by Wilson Tourism Hub Inc. and features a Native American artifacts gallery.	2711 Ave E	785.658.2284
Wilson	Thu-Sun	11am-4pm	Kansas Originals Meet & Greet	Meet the Kansas artists, craftsmen, food producers and authors who belong to the Post Rock Opportunities Foundation. You'll have fun learning about and seeing their products when you visit Kansas Originals store near Wilson. Free food samples to try and kolaches for sale.	233 Hwy 232	785.658.5593
Wilson	Fri	12-4pm	Kevin Lundy at The Midland Mercantile & Art Gallery	View the work of Kevin Lundy and meet this exceptional local artist at the Midland Mercantile and Art Gallery.	2711 Ave E	785.658.2284
Wilson	Sat	1-4pm	Lang Memorial Library Open House	Walk through the historic 100-year-old Lang Memorial Library and learn about Wilson's local families, schools, businesses, churches, and the Czech influence in this region.	2405 Ave F	785.658.3648



EVENTS

Ellsworth County continued

CITY	DAY(S)	TIME	EVENT	DESCRIPTION	ADDRESS	PHONE
Wilson	Fri	8:30-10am	Morning Social at the Senior Center	The Wilson Senior Center invites you to enjoy coffee and breakfast pastries during their weekly morning social. Freewill donations are accepted.	511 25th St	785.658.2388
Wilson	Fri	7:30-10pm	"Paper Moon" classic film showing	Join locals on the patio at The Historic Midland Railroad Hotel with an experience for the entire family! View the classic film of "Paper Moon" projected on the limestone of the hotel. Free popcorn will be provided.	414 26th St	785.658.2284
Wilson	Fri-Sat	10am-2pm	Ride the Nex-tech Express Train and Explore the Czech Eggs!	Take a short ride on the Nex-Tech train to explore all of the local Czech eggs downtown along with the Statute of Liberty.	255 Ave E	785.658.7516
Wilson	Thu	5-5:30pm	Voices from the Grave	Listen to local historian Cherilee Ward make history come alive in this cemetery. Freewill donations will go towards the purchase of a small stone for the disgraced city marshal, Jesse Tillman.	Wilson Cemetery, Corner of 2nd Rd & 31st St	785.531.9096
Wilson	Fri	1-4pm	Wheat Weaving Display	The Immanuel Lutheran Church displays their wheat weaving each year during harvest and will be on display during the BKRT. Stop by and visit with church members and enjoy some refreshments.	2819 Ave F	785.531.9096

*Find longer descriptions & activities arranged by day on the BKRT website.
Use written directions & online address links for finding locations.*

Paid advertisement.



ELLSWORTH EVENTS: MAY 2 - 5, 2024

BOURBON/ WHISKEY TASTING & EDUCATION IN AN UNDERGROUND SPEAKEASY

210 N. DOUGLAS AVE, ELLSWORTH, KS 67439

(THURS - SAT, 10:00AM TO 6:00PM)
(SUNDAY NOON TILL 4:00PM)

25 MIN TOUR COST: \$35.00

Delight your senses with a journey into the world of rich flavors and nuanced notes with spirits from all around the world. Immerse yourself in the art of Bourbon and Whiskey tasting, and education in a One-of-a-kind underground speakeasy restaurant.



NUCLEAR MISSILE SILO TOUR

2432 AVE I, BROOKVILLE, KS 67425

(THURS - SAT, 10:00AM TO 6:00PM)
(SUNDAY NOON TILL 4:00PM)

25 MIN TOUR COST: \$35.00

Includes a Free \$25.00 collectors Missile Silo Coffee Mug and a Free UFO craft beer.

Come explore the Launch Control Center that is now an Airbnb, and follow the 40 ft tunnel in to the missile silo. This incredible underground structure is 52' inside diameter and is approximately 200' deep.

You have to see it to believe it.

NUCLEAR MISSILE SILO EVENING CELEBRATION WITH BONFIRE, MUSIC AND DRINKS

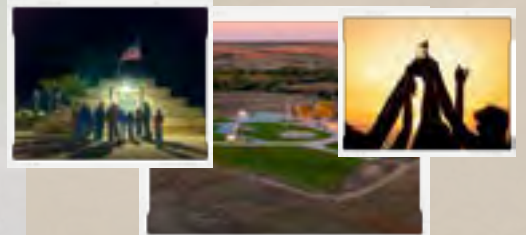
2432 AVE I, BROOKVILLE, KS 67425

(FRI/SAT 8:00PM TO 1:00AM)

5 HOURS EXPERINCE COST: \$50.00

Includes unlimited beers, wine, sodas , water and free \$25.00 collectors Missile Silo Coffee Mug.

Join us for an unforgettable night under the stars at the Nuclear Missile Silo. Revel in the glow of the bonfire, sway to the beats of great music, and sip on drinks that are as explosive as the setting. Overnight camping available see website for more details.



BOOK NOW: Phone : 785-201-9726 Website : <https://bkrtellsworthevents.as.me>

EVENTS



Lincoln County

CITY	DAY(S)	TIME	EVENT	DESCRIPTION	ADDRESS	PHONE
Denmark	Sat	9am-1pm	Open House at the Nielsen Farmstead	A rare opportunity to see an impressive post rock limestone house constructed in 1894 and barn in 1903. Niels Nielsen, a Danish immigrant and stone mason, established this farmstead for his family just west of Denmark in the mid-1870s. The farmstead is still occupied and managed by direct descendants of the original settlers. This is a private residence and only open to visitors on Saturday, May 4. (NHRP)	1125 E Pike Dr	785.658.6060
Denmark	Sat	9am-1pm	Velkommen to Historic Denmark	Visit many of Denmark's historic sites during open houses for the historic post rock limestone church, community hall, and commercial district buildings. All open houses are Saturday from 9am-1pm. Volunteers will be on-site to talk about the history of this Scandinavian-settled community. Refreshments will be served along with aebleskiver (Danish pancakes) demonstrations at the Community Hall.	Denmark	785.524.8954
Lincoln	Thu	8-10pm	Dark Sky Viewing	Kansas has some of the best night sky viewing in the country. Join astronomers in looking at constellations and observing planets and other astronomical features through telescopes. From Lincoln, drive west on K-18 for 2 miles to 170th Rd. Turn south for approximately 4 miles to trail head sign.	950 N 170th Rd	785.537.4385
Lincoln	Sat	See Description	Grave Witching at Lincoln Cemetery	Come learn the art of grave witching! Dowsing for water or metal – and even bodies – has been practiced for thousands of years. Genealogists use it to find lost graveyards of ancestors or gravesites where markers have disappeared or eroded. Try your hand at the practice and learn about notable burials in the cemetery. Located at the intersection of Highway 18 and Lincoln Ave, aka Main St. Saturday at 1pm and 2pm.	E Lincoln Ave	785.524.9997
Lincoln	Thu	7-8pm	Gravel Bike Ride with Locals	The local mountain biking club will take you on an easy ride to see some of Lincoln County's landscape. Ride will take approximately 30 minutes to an hour. Bring your own bike that can handle both paved and gravel roads.	Football practice field on N 1st St and E North St	785.820.1453
Lincoln	Fri	3-3:30pm	Managing for Quail and other wildlife	Audubon of Kansas' Achterberg Wildlife-Friendly Demonstration Farm hosts two coveys of bobwhite quail. Executive Director Jackie Augustine, will talk about habitat improvements to remove woody species, making the area more suitable for the birds. From Lincoln, drive west on K-18 for 2 miles to 170th Rd. Turn south for approximately 4 miles to trail head sign.	950 N 170th Rd	785.537.4385
Lincoln	Fri	8-8:30am	Migration Bird Hike	May is the height of songbird migration through Kansas. Audubon of Kansas' Connie Achterberg Wildlife-Friendly Demonstration Farm has a mix of habitats that attracts a wide variety of birds. Executive Director Jackie Augustine will lead a short hike through the sanctuary and help you identify birds by both sight and sound. If you have them, bring binoculars. Tour will take approximately 30 minutes. From Lincoln, drive west on K-18 for 2 miles to 170th Rd. Turn south for approximately 4 miles to trail head sign.	950 N 170th Rd	785.537.4385
Lincoln	Fri	7am-9pm	Open Gym at Post Rock Fitness	Check out how a downtown building built in 1918 was transformed into a top-notch gym.	113 W Lincoln Ave	785.524.9009
Lincoln	Fri-Sat	8am-2pm	Open House at Lincoln's Free House	Two years ago, Lincoln's Free House went viral on social media with people from all over the country wanting to save the house. Now, the incredible transformation of the house has been featured as "The Big Green Monster" on "In with the Old," a show now streaming on HBO and Discovery+. During the BKRT you'll be able to tour the home and visit with the owners and learn about their amazing journey. Refreshments will be served with some food for sale. House tours will begin at 8am, 10am, and 12pm each day and last 30 minutes.	2137 E Hwy 18	913.325.9738
Lincoln	Fri	8-10pm	Owl Hike	The Connie Achterberg Wildlife-Friendly Demonstration Farm is home to both Barred and Great Horned owls. Audubon of Kansas Executive Director Jackie Augustine will lead participants in a hike through the sanctuary to listen for owls and learn how to identify owls by their calls. As owls are wild animals, viewing is not guaranteed, but there is a good chance to see them. From Lincoln, drive west on K-18 for 2 miles to 170th Rd. Turn south for approximately 4 miles to trail head sign.	950 N 170th Rd	785.537.4385
Lincoln	Thu	3-5pm	Pie on the Porch at the Marshall-Yohe House	Enjoy a piece of locally made MarCon Pie on the porch of the Marshall-Yohe House, a National Register of Historic Places site. Donations appreciated.	316 S 2nd St	785.524.9997
Lincoln	Thu-Sat	See Description	Post Rock Scavenger Hunt	Learn about the history behind Post Rocks in Lincoln! Scavenger hunt answers will all be within walking distance in downtown Lincoln. Pick up your info sheet at the Lincoln Health Mart Pharmacy, 204 W. Lincoln Ave, Thu-Fri 9am-6pm (closed 12:30-1:30pm) and Sat 9am-12pm. Scavenger Hunt will take approximately 45 minutes to complete around downtown Lincoln. Return your form for a free prize.	204 W Lincoln Ave	785.826.1583
Lincoln	Fri-Sat	See Description	Sip & Shop BKRT '24 Edition	Enjoy a drinky-treat and a tasty snack while you shop! Take pictures in our photo booth while shopping our new spring arrivals! Check out our ad in the BKRT guide for more information about this come and go event. Fri 10am-6pm; Sat 10am-4pm	143 W Lincoln Ave	785.524.4752
Sylvan Grove	Sat	1-5pm	Meet & Greet with the Discoverer of Squalicorax deckeri	Lincoln limestone is a hidden gem for paleontologists, celebrated for its bountiful collection of well-preserved shark and reptile teeth. Meet Ramo Decker, founder of a new species of ancient shark named "Squalicorax deckeri", and see his display of numerous fossils found in and around Lincoln County and the Niobrara Chalk of Western Kansas.	129 S Main	785.545.6473



EVENTS

Lincoln County

CITY	DAY(S)	TIME	EVENT	DESCRIPTION	ADDRESS	PHONE
Sylvan Grove	Fri-Sat	See Description	Peach Cobbler at the historic Evangelical Lutheran School	Enjoy a bowl of homemade peach cobbler, a specialty of the ladies of the Lutheran Church made for Lincoln County Fairgoers for decades, while imagining what school was like for children when the building was constructed in 1913. Fri 1-5pm; Sat 10am-5pm	308 N Indiana	785.526.7152
Sylvan Grove	Fri-Sat	See Description	Vonada Post Rock Quarry Demonstrations	Learn how Post Rock limestone got its name and built homes, farms, and communities across an 18-county region. Quarry is available for drive-by viewing anytime. Demonstrations of how settlers split the limestone using feathers and wedges Friday at 4pm and Saturday at 10am. From the junction of Hwys 181 and 18, drive 3 miles north on Hwy 181, then 2 1/4 miles west on Oak Drive. Vonada's Quarry was one of the top 8 Wonders of Kansas - Commerce.	E Oak Dr	785.658.5339
Vesper	Sat	See Description	Bingo Night	It's Bingo Night in Vesper! This well-loved local tradition has been going on for 50 years. Goodies for sale include grilled burgers, popcorn, ice cream sundaes, root beer floats and other homemade snacks. Food - 5pm, Band - 6pm, Bingo 7pm	1247 N 120th Rd	785.615.1048
Vesper	Thu	4-6pm	Farmers & Makers Market	This "From the Land of Kansas" farmers market sells local seasonal produce along with homemade baked goods, canned foods, jams, jellies, infused honey products, and locally produced crafts.	1247 N 120th Rd	785.615.1048

*Find longer descriptions & activities arranged by day on the BKRT website.
Use written directions & online address links for finding locations.*

AOK
AUDUBON OF KANSAS

**Achterberg
Wildlife-Friendly
Demonstration Farm**
operated by Audubon of Kansas

Take a hike!
1-mile nature trail
open to the public
dawn until dusk

**950 N. 170th Rd
Lincoln, KS**
Along Bullfoot Creek

Look for: birds, deer,
butterflies and huge oaks

audubonofkansas.org

**MARKETING
RURAL KANSAS**
Courtland, Kansas

PHONE: 785-454-1194

**BUSINESS
COMMUNITY
MARKETING & WEB**

**GRAPHIC DESIGN
PHOTOGRAPHY
VIDEOGRAPHY**

jenrusfreelance.com 314graphicdesign.com

BUY STAMPS!

Buying stamps in small-town post offices helps increase revenue. Revenue plus the number of post office boxes, number of bulk rate permits, and amount of mail are some of the determinants of salaries and open hours for a post office. When you find an open post office on the 2024 BKRT, please support it!

EVENTS



City of Lucas

CITY	DAY(S)	TIME	EVENT	DESCRIPTION	ADDRESS	PHONE
Lucas	Fri	10-11am	Coffee & Doughnuts at the Horseshoe Lodge	Enjoy coffee and doughnuts while exploring the uniquely decorated lodge.	414 N Main	785.525.6288
Lucas	Thu-Fri	See Description	Community Theater Open House	View a series of photo presentations while taking a rest inside this local theater. Check out the quilt display, buy concessions, take advantage of restrooms, and watch the space transform from a movie theater to a multi-purpose facility when the big screen is moved from the front door to the back! Thu-Fri 10am to 5pm with concessions and moving of the big screen from 4-5pm.	116 S Main	785.658.5917
Lucas	Sat	6-8:30pm	Garden of Eden Open House	Attend an after-hours open house with Friends of S.P. Dinsmoor's Garden of Eden board of directors for guided tours and to learn about the history, architecture, and preservation of this grassroots art environment. Contribute to the legacy by bringing a strawberry plant, red vinca or yellow marigold plants for Dinsmoor's concrete flower planters. Donations appreciated.	305 E 2nd St	785.658.5917
Lucas	Fri	See Description	Geology Tour of Miller's Park	Join regional expert Von Rothenberger for a geology tour of Miller's Park. Von will provide a description of the rocks Roy and Clara Miller collected on their travels, tying in this lovely site to the geological history of the region and nation. The tour will begin shortly after "The Stump" ends at 11:45am on Friday.	307 E 2nd St	785.760.0826
Lucas	Sat	1-3pm	Stonework Demonstration	Jon Pancost, stone mason and owner of Bluestem Quarry & Stone Works, will demonstrate how architectural stone is processed through saw work, the use of the bed planer and chisel work. This is a come and go event.	207 S Main	785.639.4636
Lucas	Thu-Sat	9am-5pm	Themed Keychains	Purchase a starter keychain at the Lucas Public Library then travel through the town collecting charms to add from participating businesses/organizations. Proceeds will help fund the Lucas Public Library. \$10 per keychain.	135 S Main	785.658.6603

*Find longer descriptions & activities arranged by day on the BKRT website.
Use written directions & online address links for finding locations.*



NEED SUPPLIES?

For a wholesale truck to even stop at a grocery store, the store must buy at least \$10,000 worth of groceries a week, sometimes more. Since many small stores can't do that, they sometimes share orders with another store or buy their inventory from a big box store.

It certainly isn't easy and owners work long hours. If you can, pick up some groceries in small stores during the BKRT.

Explore

GRASSROOTS ART CENTER

Center for Outsider Art and Post Rock Limestone Architecture.



- Florence Deeble Rock Garden
- Bowl Plaza (World Renowned Public Restroom)
- Post Rock Limestone Courtyard
- Over 40 Self-taught grassroots artist on display



Exhibits are always changing so be sure to check out our website and social to see what's happening!

Show this ad during your 2024 visit and receive \$1 off your admission:

\$1 Off

More information, visit us at: www.grassrootsart.net

213 S Main St | Lucas KS | 67648

Hours: 10am-5pm Mon-Sat, 1-5pm Sunday (May-September)

LUCAS AREA CHAMBER OF COMMERCE PRESENTS

50TH ANNUAL ADAM'S APPLE FESTIVAL

GOLDEN JUBILEE
LUCAS, KANSAS
AUGUST 24, 2024

- Parade + Show & Shine Car Show
- Vendors + Cornhole Tournament
- Bingo + Silent Auction + Community Dinner
- Pedal Power Contest + Watermelon Feed
- Kid's Activities & Games + Live Music
- Fireworks + More

www.lucaskansas.com @getlucas lucascoc@wtciweb.com

USA Today's

#1 Small Town with the Best Art Scene in the United States!



Photo by Greg Rud



www.lucaskansas.com

GAS~FOOD~LODGING



Lucas Community Theater

116 South Main-785-525-7747

Movies every Sat & Sun

Lucas Publishing

203 South Main-785-525-6355

For all your publishing needs

Leach & Naegle Hardware

206 South Main-785-525-6265

Stop in during BKRT for a special surprise!

BUNKER HILL | DORRANCE | GORHAM | LUCAS | LURAY | PARADISE | RUSSELL | WALDO

BOOK YOUR STAY IN

RUSSELL RC COUNTY TODAY!



SCAN ME





PLACES TO EAT



Ellsworth County

NAME	ADDRESS	CITY	DAY(S)	HOURS	DESCRIPTION	PHONE
900 Room	900 E 2nd St	Ellsworth	Thu-Sun	11am-4pm	Located at the Ellsworth Golf Course, you'll hit a hole in one when you order the beef or chicken sliders. A small menu with bold bites will help keep you on schedule during your BKRT explorations.	785.472.4236
El A de Oros	1408 Foster Rd	Ellsworth	Thu-Sun	See Description	Enjoy authentic Mexican food from a huge menu in a family atmosphere with friendly service. One traveler says it's worth the detour off I-70! The margaritas are considered the best in town. Thu 11am-9:30pm; Fri-Sat 11am-10pm; Sun 11am-9pm	785.472.4128
Ele's Corner	120 N Douglas Ave	Ellsworth	Thu-Sat	11am-10pm	Ele's is a delightful place with a large and varied menu. You'll find everything from appetizers, soups, salads, sandwiches, burgers, steaks, Mexican dishes, seafood, desserts, and drinks from the bar. Check their Facebook page for the special of the day.	785.307.9895
Hattie Jo's	113 W North Main	Ellsworth	Thu-Sat	7am-12pm	Fuel up for a big day of exploring with special coffee and homebaked goods at Hattie Jo's!	785.252.7261
Senior Center	115 E North Main	Ellsworth	Thu-Fri	See Description	Have lunch with local seniors for stories and good conversation. A well-balanced meal is served for only \$7 but reservations must be made in advance by calling 785.472.5185. View the menu on the senior center's Facebook page. Meals served from 11:45am-1:30pm	785.472.5185
Smoky Hill Cattlewomen Hamburger Cookout	104 W South Main	Ellsworth	Sat	11am	Smoky Hill CowBelles will serve their famous charcoal locally-sourced grilled hamburgers starting at 11am - until they run out! Cookout is located at the Hodgden House Museum Complex.	785.531.1833
Sugar Shack	123 S Douglas Ave	Ellsworth	Thu-Sat	1-9pm	A favorite local hot spot featuring shaved-ice treats, soft-serve flavorburst ice cream, creative layered sundaes, and delicious malts and shakes. Take a break during your BKRT visit and savor a delicious, cool treat!	316.210.7882
68th Annual Pancake Feed	St. Peter's Lutheran Church Parish Hall, 209 S County Rd	Holyrood	Sun	10am-7pm	The men of St. Peter's Lutheran Church will host their 68th Annual post-Easter Pancake Feed. Enjoy a hearty meal of pancakes, eggs, sausage, biscuits and gravy, juice and coffee before hitting the road. Meet Pancake Chef Arlen, who has cooked for 63 of the 68 breakfasts!	785.252.7258
C & V Convenient Store	608 N Charles	Holyrood	Thu-Sun	See Description	Stop by for great short order options like Buffalo Chips, cheeseburgers and homestyle chicken fry steaks. Grab a beverage and gas for the road. Inside dining room. Breakfast served until 10am daily, and grill closes at 6:30pm daily. Thu-Fri 7am-7pm, Sat 8am-7pm, Sun 9am-7pm	785.252.3407
Sunset Lounge Family Restaurant	101 N Main	Holyrood	Sat	11am-4pm	A homey place where locals gather to eat and visit. Cheeseburgers and batter-dipped cheese curds are popular items on the menu.	785.252.7258
Vegan Lunch Pop-Up	St Pauls UCC, 301 E Nassau Ave	Holyrood	Thu-Sat	11:30am-1pm	Homemade lunches available for plant-based eaters traveling through cattle country. Stair or elevator access to the kitchen located in the church basement. Reservations requested for parties over 8 with at least one day advance notice. Freewill donation via cash or Apple Pay.	913.375.2147
Orozco's Portales	117 N Kansas	Kanopolis	Thu-Sun	See Description	Hungry for great Mexican food? The huevos rancheros and homemade biscuits and gravy are breakfast favorites, and the flour tortillas are homemade. Thu 6-9am and 11am-7pm; Fri-Sat 6-9am and 11am-8pm; Sun 7-9am and 11am-2pm	785.472.4226
Historic Midland Railroad Hotel / Sample Room Tavern & The Barn	414 26th St	Wilson	Thu-Sun	Daylight Hours	The food has a stellar reputation at this 1899 restored hotel. There are two dining options onsite: The Sample Room Tavern (Tue-Sun) and The Barn, Kansas Libations Club & Social Room (Thu-Sat). Both open at 5pm. Reservations recommended.	785.658.2284
Homemade Brat Meal	St. Wenceslaus Parish Hall, 2807 Ave D	Wilson	Sun	11am-12:30pm	Come and feast on a homemade brat meal provided by church groups from St. Wenceslaus and enjoy fellowship at the parish hall. Dine in or carry out.	785.545.8454
Made from Scratch	527 27th (Old US 40)	Wilson	Thu-Sun	See Description	Nearly everything, as the name tells us, is made from scratch—from the jellies to the ice cream. Bierocks, homemade pies, and kolaches are on the menu plus there's a German buffet on Saturday and a Fried Chicken Buffet on Sunday. Thu-Fri 7am-2pm; Sat-Sun 7am-3pm	785.658.3300
Sloppy Joe Meal at American Legion Post 262	419 27th St	Wilson	Fri	5:30-7pm	Sloppy Joe meal served at the local American Legion. Before or after your meal, check out Legion memorabilia and a Boy Scout mural upstairs. \$7.00 suggested meal donation. Meal from 5:30-7pm, beverages will be served until midnight.	785.658.5338

*Find longer descriptions & activities arranged by day on the BKRT website.
Use written directions & online address links for finding locations.*

PLACES TO EAT



Ellsworth County continued

NAME	ADDRESS	CITY	DAY(S)	HOURS	DESCRIPTION	PHONE
Snack Shack	186 Old Hwy 40	Wilson	Thu-Sat	See Description	For over 60 years, this quaint diner has been serving burgers, homemade daily specials, ice cream treats and pie. Thu-Fri 11am-7pm; Sat 11am-4pm	785.420.0004
Stop 2 Shop	2720 Ave E	Wilson	Thu-Sat	11am-8pm	Enjoy a cool and comfortable atmosphere with daily lunch specials. Locals enjoy morning pastries and biscuits and gravy to jump-start their day. Grill closed on Sunday.	785.658.2559

Lincoln County

NAME	ADDRESS	CITY	DAY(S)	HOURS	DESCRIPTION	PHONE
Leo Dowlin and Eric Jones Memorial Fish Fry	Barnard Community Building, 305 Main	Barnard	Sun	5-7pm	The Barnard Lions Club's annual fish fry is a popular event featuring fish fried in a secret batter recipe known to only one member of the club. The meal also includes hamburgers, hot dogs, cornbread and cole slaw. Proceeds support local projects.	785.534.9227
Nancy's Fancys	314 Main	Barnard	Sat	8am-8pm	Small town cafe and craft shop, where everything is made from scratch. Craving biscuits and gravy and homemade ice cream? Nancy will be serving them all day!	785.792.6343
Beverly Bar & Grill	100 3rd St	Beverly	Thu-Sat	See Description	Known for their "darn good burgers", sandwiches, wraps, specials and desserts. Ice cold beer will quench your thirst after a day of exploring. Thu 12-8pm; Fri-Sat 12-10pm	785.436.2201
Biggie Biggs Pizza & Pub	120 S 4th St	Lincoln	Thu-Sat	5-9pm	Stone-baked pizza, calzones, Justin's Famous Cheese Stix, pasta, appetizers, draft beer, and a full bar. A local favorite spot for more than 10 years!	785.524.5044
El Tres Mexican Restaurant	1026 N 6th St	Lincoln	Thu-Sun	11am-9pm	A large menu and icy margaritas comes with fast, friendly service at this new Mexican restaurant.	785.524.2021
Hot Dog Day at the Bank	100 W Lincoln Ave	Lincoln	Fri	11am-1pm	Free hot dog meal, including chips and drink, served outside Citizens State Bank & Trust Co in downtown Lincoln.	785.524.4840
Lincoln Grocery	123 S 4th St	Lincoln	Thu-Sun	See Description	Get out on the road fast with a quick breakfast or stop by for the homemade daily special. Check Facebook page for the daily special offering. Thu-Sat 7am-8pm; Sun 8am-8pm	785.524.4401
Mity Mart	1903 KS-18	Lincoln	Thu-Sun	See Description	Grab a snack, cold drink, hot coffee, or a lunch special. Thursday is Loaded Homemade Mac N Cheese, Friday is Burger Day, and Saturday is Pulled Chicken Sliders. Thu-Fri 5am-10pm; Sat 6am-10pm; Sun 6am-9pm	785.524.4544
Post Rock Motel & Restaurant	1907 E KS-18	Lincoln	Thu-Sat	7am-8:30pm	Himalayan food in Lincoln, Kansas? Yes! Located next to the Post Rock Motel, this small restaurant has a limited but delicious menu featuring chicken tikka masala, butter chicken, chicken or pork curry, and Himalayan dumplings called momos. Locals also rave about their delicious cheeseburgers! For breakfast choose from biscuits and gravy, omelettes, and oatmeal pudding.	785.420.1081
Violette's	147 E Lincoln Ave	Lincoln	Thu-Sat	See Description	Wake up at Violette's with coffee, lattes, cappuccinos, homemade kolaches and cinnamon rolls. Grab-and-go lunch options include wraps, sandwiches and salads. Thu-Fri 7:30am-2pm; Sat 8am-2pm	785.524.2448
Breakfast at the Warehouse / Farmers Elevator Co	129 S Main	Sylvan Grove	Sat	8am-12pm	Enjoy homemade breakfast burritos, a long-time favorite of the Lincoln County Fair, made by the Sylvan Senior Center while looking over the recently rehabbed historic building. Add a slice of the popular German Coffeecake, too. Dine in or carry out.	785.404.9759
Feedlot Bar & Grill	116 N Main	Sylvan Grove	Thu-Sat	See Description	You'll find all your favorite burger combinations, appetizers, daily specials and homemade desserts. Wash it down with your favorite beverage or a draft beer. Thu-Fri 11am-2pm; Sat 11am-1:30pm	785.526.7376
Fly Boy Brewery & Eats	105 N Main	Sylvan Grove	Thu-Sun	See Description	When you combine a beer-making crop duster, a chef who propels regular food into something special, and an old hardware store with great atmosphere, you have just the right landing place for a great evening. Don't forget to buzz in for Sunday Brunch. Thu-Sat 5-10pm; Sun 11am-2pm	785.526.7800



PLACES TO EAT



City of Lucas

NAME	ADDRESS	CITY	DAY(S)	HOURS	DESCRIPTION	PHONE
Happy Trails	Main St	Lucas	Thu-Fri	9am-5pm	Order a variety of snow cones, dirty sodas (different flavored syrups and cream), Italian sodas, homemade gourmet s'mores and gourmet cattle corn (popcorn with white and milk chocolate with sea salt) from this food trailer on Main Street.	785.420.0710
K-18 Cafe	5495 KS-18	Lucas	Thu-Sun	6am-10pm	K-18 Cafe is the local eating stop for daily specials and homemade desserts and pie. It's also convenient to fly in for a meal, as the cafe is located 200 yards from the 2900' lighted, asphalt Lucas airport runway!	785.525.6262
Maupin BBQ	135 S Main	Lucas	Sat	10:30am-4pm	Don't miss Barry Maupin's real wood-fired barbecue mobile trailer set up in downtown Lucas on Saturday. Popular dishes are the pulled pork and brisket sandwiches, pulled pork nachos and smoked homemade mac and cheese.	785.658.7021
Rogue Walking Tacos Stand	135 S Main	Lucas	Fri	10am-3pm	Stroll in to the new Lucas Community Room and chase down some Walking Tacos to fill your belly.	785.658,6603
Switchgrass	208 S Main	Lucas	Thu-Sun	See Description	Sample a range of regionally roasted coffees and specialty beverages while browsing this unique art cooperative. Home-baked goods, sandwiches, and made-from-scratch soups are also on the menu. Thu-Sat 8am-5pm; Sun 8am-4pm	785.341.1025

Switchgrass

Wednesday 8 AM-4 PM
 Thursday 8 AM-5 PM
 Friday 8 AM-5 PM
 Saturday 8 AM-5 PM
 Sunday 8 AM-4 PM

208 South Main Lucas, Kansas

Nonprofit Art Gallery, Coffee Stand, Baked Goods, Soup & Sandwiches, Thrift Store, Art Classes

www.SwitchgrassCoop.com

Live LINCOLN COUNTY Kansas

POST ROCK CAPITAL OF KANSAS

Lincoln, Sylvan Grove, Barnard, Beverly

www.LiveLincolnCounty.com

- Job Board • Housing Programs
- Relocation Resources • Entrepreneurship Opportunities
- Business Directory • Visitors Guide • Community Event Calendar
- Business Assistance Programs



THE STUMP SCHEDULE

For 28 years, Marci Penner would bring a tree stump to each Kansas Sampler Festival location to stand on and then ask the audience questions about things to see and do in Kansas. The same rules apply this year. Those with the first correct answer will get a ticket, and at the end of the 15-minute game, someone will win a prize from a Stump Sponsor. It's a fast and fun fifteen minutes!

For the BKRT, the stump will make appearances in different areas of the three counties all four days of the event.

Merchandise, including *the Kansas Guidebook 2 for Explorers*, t-shirts, backpacks, picnic blankets, cooler bags, and car flags will be sold at the Stumps and Explorer Club meeting.

Bring a lawn chair and your Kansas knowledge!

THURSDAY, MAY 2

2pm - Wilson at the Czech Egg, Avenue D and U.S. 40 (27th St.)

FRIDAY, MAY 3

11am - Lucas at the Garden of Eden
305 E. 2nd

SATURDAY, MAY 4

9am - Sylvan Grove, between the Depot and The Warehouse, 129 S Main

2pm - Ellsworth at the Ellsworth County Museum Complex, 104 W South Main

(all are welcome!)

186 27th Street Old 10
Wilson, KS 67490
(785) 638-2600

AFTER HARVEST WILSON, KANSAS
CZECH FESTIVAL
JULY 26 & 27 2024
ALWAYS THE LAST SATURDAY IN JULY

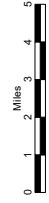
SMALL TOWN
BIG VIBES

- PARADE
- LIVE MUSIC
- CZECH DANCERS
- RIDES & INFLATABLES
- ARTS, CRAFTS, & FOOD VENDORS
- CZECH QUEEN & PRINCESS PAGEANT
- CORNHOLE TOURNAMENT & SO MUCH MORE!

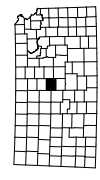
- HIGHWAY MARKERS**
- Interstate Numbered Highway
 - Kansas Turnpike Authority
 - U.S. Numbered Highway
 - State Numbered Highway
- HIGHWAY CLASSIFICATIONS**
- Interstate
 - Kansas Turnpike Authority
 - U.S. Route - Divided
 - U.S. Route - Undivided
 - U.S. or State Route - Computed/Access
 - State Route - Divided
 - State Route - Undivided
- ROAD CLASSIFICATIONS**
- Major Collector - Improved
 - Major Collector - Paved
 - Major Collector - Unimproved
 - Local - Paved
 - Local - Stone or Gravel
 - Local - Soil
 - Local - Dirt
- ROAD SYSTEM DESIGNATION**
- End of Designated System
 - U.S. Route
 - State Route
 - County Road System
 - Major Collector
 - MCS
- BOUNDARIES**
- State Boundary
 - County Boundary
 - Military Post Boundary
 - Indian Reservation
 - Section Line
 - Park or Wildlife Area
 - Incorporated City Limit (Population)
 - Urban Boundary
- CITIES OR TOWNS**
- State Capital
 - County Seat
 - Populated Place
 - Locale
- ARWAYS AND AIRPORTS**
- Commercial
 - Regional
 - Business
 - Community
 - Basic
- MAP SYMBOLS**
- Roadside
 - Interchange
 - Bridge - Open to Traffic
 - Bridge - Closed to Traffic
 - Railroad
 - Material of Concrete (Erod. Prone Locality)
 - Rail Trail
 - Levee or Dike
- DRAINAGE**
- Major River
 - Lake, Reservoir, or Pond (Erod. Prone)
 - River or Major Drainage
 - Minor Drainage

**GENERAL HIGHWAY MAP
ELLSWORTH COUNTY
KANSAS**

PREPARED BY THE
KANSAS DEPARTMENT OF TRANSPORTATION
IN COOPERATION WITH THE
U.S. DEPARTMENT OF TRANSPORTATION
FEDERAL HIGHWAY ADMINISTRATION



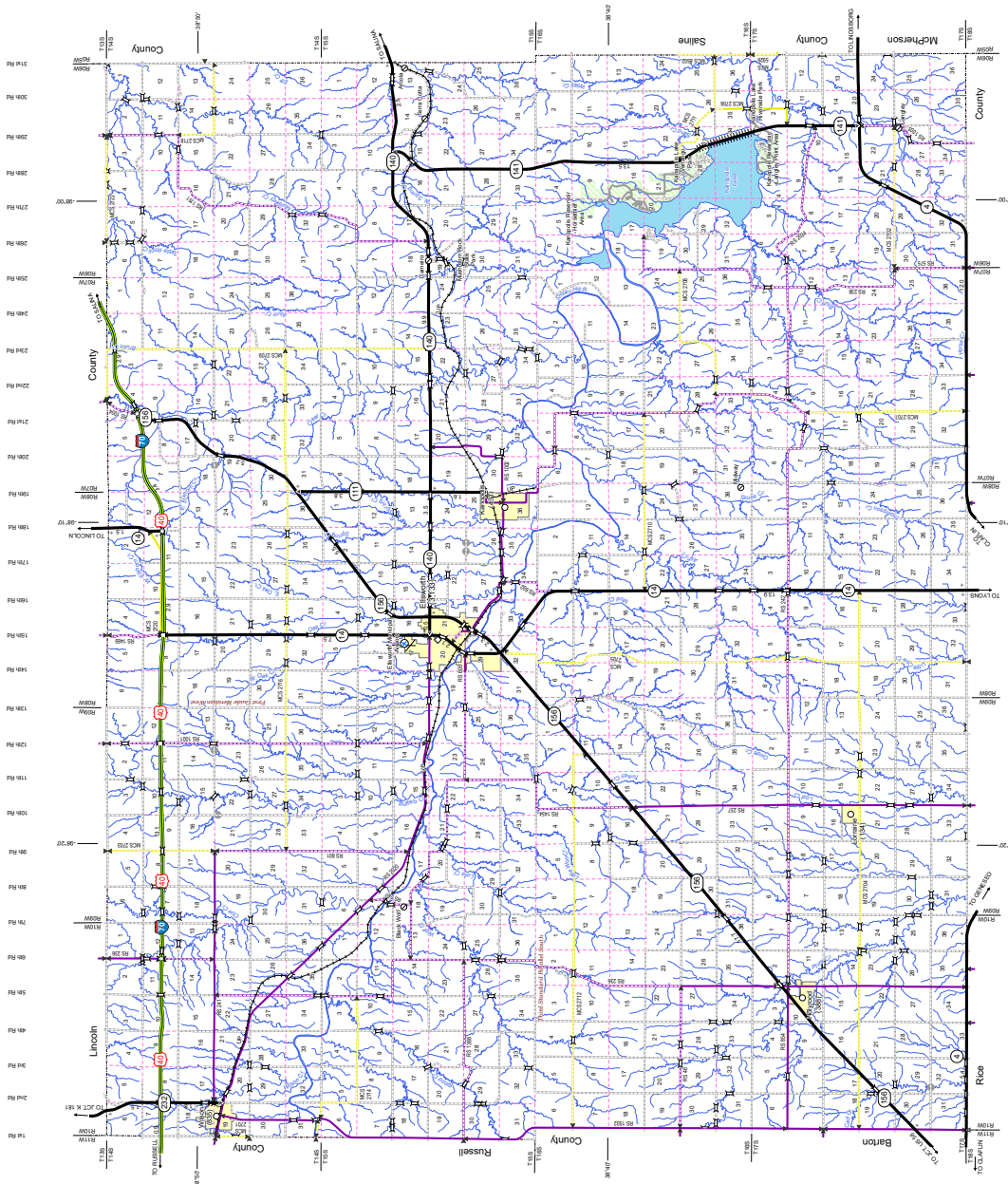
DECEMBER 2023



Kansas Regional Coordinate System (KRCS)
KRCS 06 Beilri NAD 1983 2011 TM US Feet



KDOT makes no warranties, guarantees, or representations for the accuracy of this information and assumes no liability for errors or omissions.



314 Rd
308 Rd
298 Rd
288 Rd
278 Rd
268 Rd
258 Rd
248 Rd
238 Rd
228 Rd
218 Rd
208 Rd
198 Rd
188 Rd
178 Rd
168 Rd
158 Rd
148 Rd
138 Rd
128 Rd
118 Rd
108 Rd
98 Rd
88 Rd
78 Rd
68 Rd
58 Rd
48 Rd
38 Rd
28 Rd
18 Rd
8 Rd

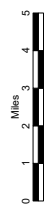
Arrows A
Arrows B
Arrows C
Arrows D
Arrows E
Arrows F
Arrows G
Arrows H
Arrows I
Arrows J
Arrows K
Arrows L
Arrows M
Arrows N
Arrows O
Arrows P
Arrows Q
Arrows R
Arrows S
Arrows T
Arrows U
Arrows V
Arrows W
Arrows X
Arrows Y

- HIGHWAY MARKERS**
- Interstate Numbered Highway
 - Kansas Turnpike Authority
 - U.S. Numbered Highway
 - State Numbered Highway
- HIGHWAY CLASSIFICATIONS**
- Interstate
 - Kansas Turnpike (KTA)
 - U.S. or State Route - Committed Access
 - U.S. Route - Divided
 - U.S. Route - Undivided
 - State Route - Divided
 - State Route - Undivided
 - State Route - Unimproved
 - Major Collector - Paved
 - Minor Collector - Paved
 - Major Collector - Unimproved
 - Minor Collector - Unimproved
 - Local - Paved
 - Local - Stone or Gravel
 - Local - Dirt
 - Local - Sub
 - Major Arterial Street
- ROAD SYSTEM DESIGNATION**
- Edge of Designated System
 - Phase Between Which
 - Changes are Measured
 - County Road System
 - Major Collector
 - Minor Collector
- BOUNDARIES**
- State Boundary
 - County Boundary
 - Military Fort Boundary
 - Water Reservation
 - Section Line
 - Park or Wildlife Area
 - Incorporated City Limit (Population)
 - Urban Boundary
- CITIES OR TOWNS**
- State Capital
 - County Seat
 - Populated Place
 - Locale
- AIRWAYS AND AIRPORTS**
- Commercial
 - Regional
 - Business
 - Community
 - Basic
- MAP SYMBOLS**
- Roadabout
 - Interchange
 - Bridge - Open to Traffic
 - Bridge - Closed to Traffic
 - Railroad
 - Major River
 - Minor River
 - Natural or Constructed Flood Plain (with or without levees)
 - Rail Trail
 - Levee or Dike

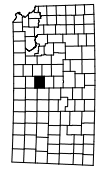


**GENERAL HIGHWAY MAP
LINCOLN COUNTY
KANSAS**

PREPARED BY THE
KANSAS DEPARTMENT OF TRANSPORTATION
IN COOPERATION WITH THE
U.S. DEPARTMENT OF TRANSPORTATION
FEDERAL HIGHWAY ADMINISTRATION



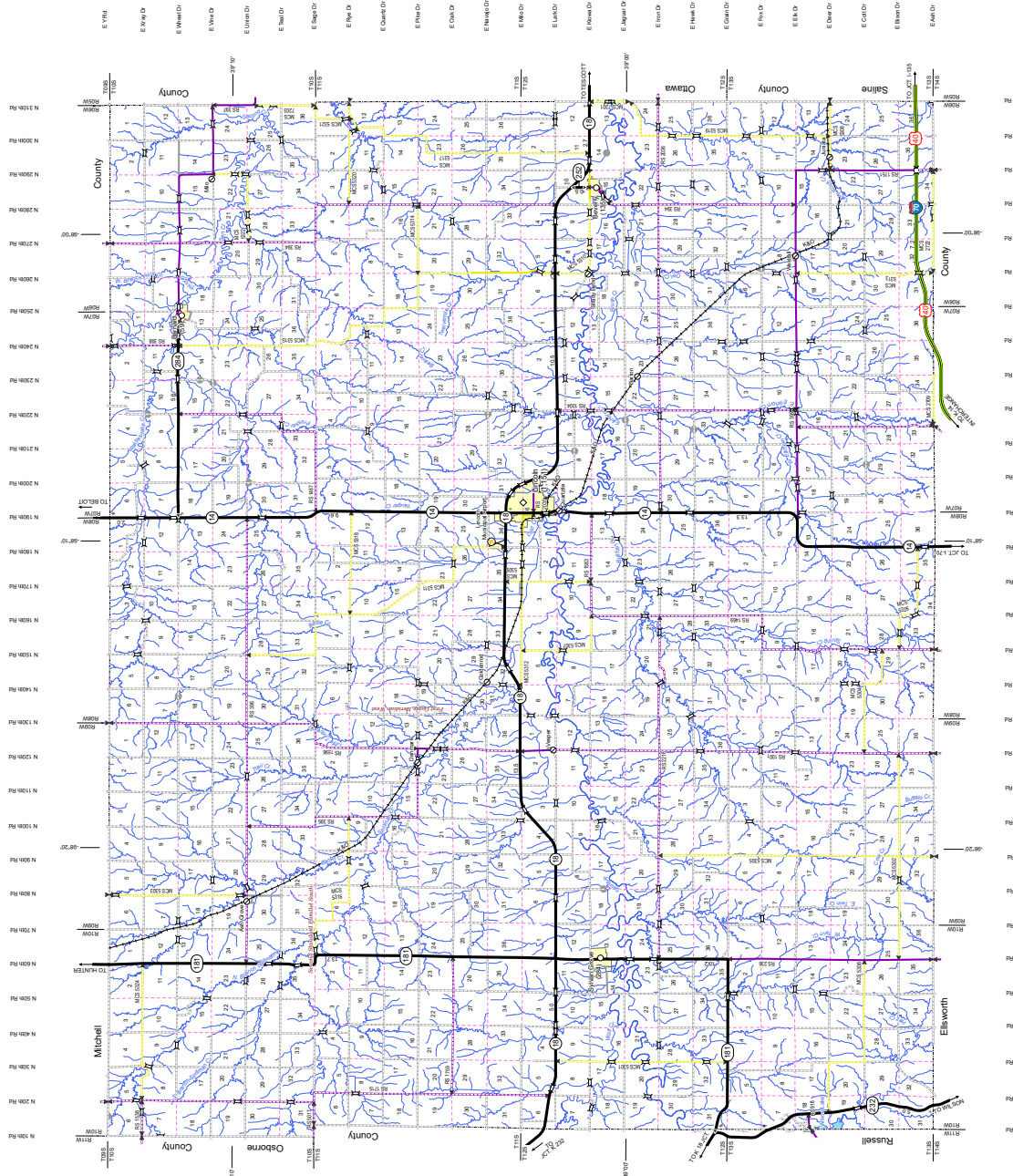
DECEMBER 2023



Kansas Regional Coordinate System (KRCS)
KRCS 06 Beilf MAD 1983 2011 TM US Feet



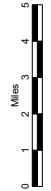
KDOT makes no warranties, guarantees, or representations of any kind, and assumes no liability for errors or omissions.



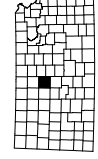
- BOUNDARIES**
- State Boundary
 - County Boundary
 - Minor First Boundary
 - Indian Reservation
 - Section Line
 - Park or Wildlife Area
 - Proposed City Limit
 - Water Boundary
- CITIES OR TOWNS**
- State Capital
 - County Seat
 - Populated Place
 - Locality
- ARWAYS AND AIRPORTS**
- Commercial
 - Regional
 - Business
 - Community
 - Basic
- MAP SYMBOLS**
- Roundabout
 - Interchange
 - Bridge - Open to Traffic
 - Bridge - Closed to Traffic
 - Railroad
 - Market of Concrete (not with 0.8m)
 - Rail (not with 0.8m)
 - Rail Trail
 - Levee or Dike
- ROAD SYSTEM DESIGNATION**
- End of Designated System
 - Points Between Which Distances are Measured
 - County Road System
 - Major Collector
 - Minor Collector
 - Major Street
 - Minor Street
- ROAD CLASSIFICATIONS**
- Interstate
 - Kansas Turnpike (KTA)
 - U.S. or State Route - Controlled Access
 - U.S. Route - Divided
 - U.S. Route - Undivided
 - State Route - Divided
 - State Route - Undivided
 - Major Collector - Front
 - Major Collector - Back
 - Major Collector - Front
 - Major Collector - Back
 - Local Street - Divided
 - Local Street - Undivided
 - Local Street - Divided
 - Local Street - Undivided
 - Major Urban Street
- DRAINAGE**
- Major River
 - Minor River
 - Levee
 - River or Major Drainage
 - Minor Drainage

**GENERAL HIGHWAY MAP
RUSSELL COUNTY
KANSAS**

PREPARED BY THE
KANSAS DEPARTMENT OF TRANSPORTATION
IN COOPERATION WITH THE
U.S. DEPARTMENT OF TRANSPORTATION
FEDERAL HIGHWAY ADMINISTRATION



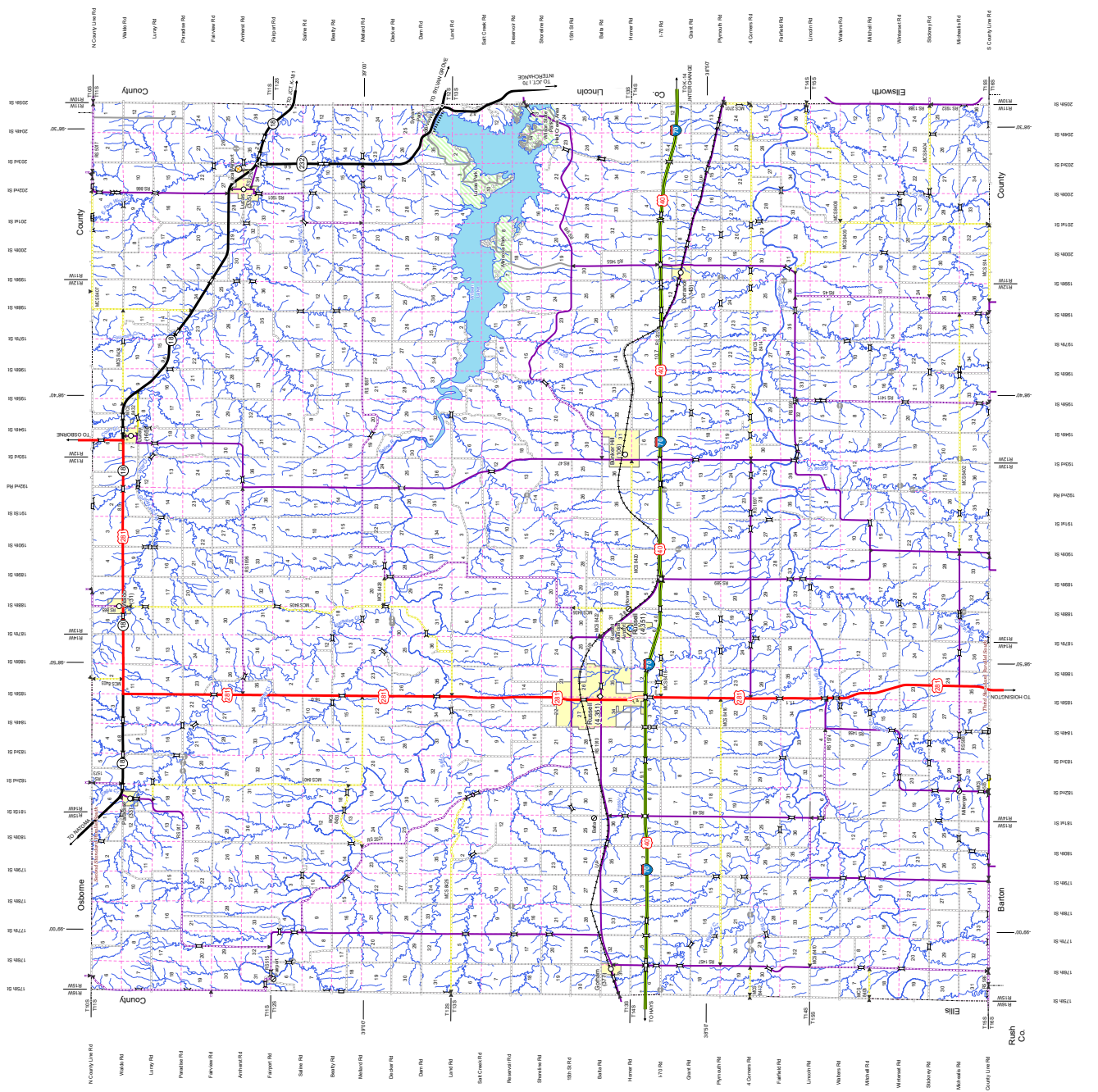
DECEMBER 2023



Kansas Regional Coordinate System (KRCS)
KRCS 05 Great Bend NAD 1983 2011 TM US Feet



KDOT makes no warranties, guarantees, or assumptions of liability for errors or omissions.



SHOP STOPS



Ellsworth County

SHOP STOP	ADDRESS	CITY	DESCRIPTION	DAY(S)	HOURS	PHONE
Classy Lady Boutique	220 N Douglas Ave	Ellsworth	Locally owned and full of women's clothing and accessories for all ages and sizes. BKRT visitors will find special discounts on merchandise. Thu-Fri 9am-5:30pm; Sat 9am-1pm	Thu-Sat	See Description	785.472.2277
Ellsworth Packing	102 S Colorado	Ellsworth	Purchase any amount of beef or pork from this family-owned meat processing plant, from a whole animal to individual cuts, or choose from a variety of smoked meats from the case. BKRT visitors receive \$5 off a beef bundle and samples of smoked meats.	Thu-Fri	8am-5pm	785.472.4177
Nemnich True Value	212 N Douglas Ave	Ellsworth	Dating back to the 1870s, this hardware store remains a strong anchor in the community providing whatever customers need. Inventory comes from 70 vendors, including several from around Kansas. Mon-Fri 8am-5:30pm; Sat 8am-5pm	Thu-Sat	See Description	785.472.3202
Oak Creek Mini Jerseys	1525 Ave C	Ellsworth	This farm will make a fun stop to buy Jersey butter, ice cream, milk, hot fudge sauce, salted caramel, yogurt and home-made soaps, lotions and other products. Meet the cows and calves that make it all possible. BKRT visitors will receive a cup of free coffee (with fresh cream!) and fudgesicles for the kiddos. Thu-Sat 8am-7pm; Sun 12-7pm	Thu-Sun	See Description	785.531.0224
Raised Rustic	211 N Douglas Ave	Ellsworth	Home to over 30 small business vendors, find refinished furniture, handmade furniture and home decor, unique gifts, kids clothing and toys, and much more in a newly expanded space. Food samples, and free gift with \$50+ purchase. Thu-Fri 10am-5:30pm; Sat 10am-3pm; Sun - by appointment	Thu-Sat	See Description	785.531.1665
Refine Design	119 N Douglas Ave	Ellsworth	Stop in and screen print your own BKRT tee from \$5-\$12. This locally owned business offers in-house custom print apparel, graphic tees and gifts. Store specials for BKRT visitors. Thu-Fri 10am-6pm; Sat 9am-3pm	Thu-Sat	See Description	785.761.3131
The Petal Place	219 N Douglas Ave	Ellsworth	The Petal Place is a full-service floral and gift shop in the heart of Ellsworth. Customers have a wide variety of products to choose from including flowers, food mixes, clothing, home decor, and more. Free samples for BKRT visitors. Thu-Fri 10am-5pm; Sat 10am-1pm	Thu-Sat	See Description	785.472.4042
Thompson's Handmade Country LLC	606 W 15th St	Ellsworth	Specialists in unique handmade home decor and corporate swag items. Find a variety of everyday, holiday, personalized and gift products. Check out the DIY paint kits and classes at the studio. BKRT visitors can get 15% off store items. Thu-Sat 10am-4pm; Sun 12-3pm	Thu-Sun	See Description	620.727.7366
Winding Creek Soap and Supply	108 E 1st St	Ellsworth	This is a multi-product store in downtown Ellsworth offering a variety of handmade products, like bath and body products, cutting boards, frames, shelves, furniture, and wood products. Laser engraving on cutting boards and tumbler cups and other customizing available. Thu-Sat 9am-6pm; Sun 10am-2pm	Thu-Sun	See Description	785.810.8788
Svaty's Produce	1056 Hwy 111	Kanopolis	Farm store offers in-season produce and local meat. A crew will be planting watermelon in the fields!	Sat	2-4pm	785.531.2333
Liberty Trades	304 Wichita Ave	Lorraine	Liberty Trades offers antiques, unique finds, and a friendly welcome in a building reminiscent of an old country store with a front porch to visit with your neighbors. Stop in and see what treasures you can find. Free souvenir for the first 75 customers.	Thu-Sat	8am-6pm	785.282.1281
Granny's Junktiques	427 27th St	Wilson	Stop at Granny's for unique finds in primitive, jewelry, glassware, china and other miscellaneous collectibles. Conveniently located within walking distance of the World's Largest Czech Egg.	Thu-Sat	10am-4pm	785.658.2633

*Find longer descriptions & activities arranged by day on the BKRT website.
Use written directions & online address links for finding locations.*



SHOP STOPS

Ellsworth County continued

SHOP STOP	ADDRESS	CITY	DESCRIPTION	DAY(S)	HOURS	PHONE
Kansas Foods, LLC	525 26th St	Wilson	Visit about the challenges and rewards of finding new purposes for historic buildings while learning about Kansas Wildflower Honey in the vestiges of a grain silo complex. Purchase honey and learn about honeybees, beekeeping and honey production.	Thu-Sat	9am-5pm	785.452.5507
Kansas Originals Market and Gallery	233 KS-232	Wilson	From I-70 Wilson exit 206, 1/4 mile north on K-232. Kansas Originals offers great outdoor picture opportunities with Wizard of Oz characters and Rusty Rojo, the famous 6-ft rooster. Inside is the largest selection of Kansas-Made, Kansas-Grown products found under one roof. During the BKRT, meet Kansas artists, craftsmen, food producers and authors and sample free Kansas food products. Thu-Sat 9am-6pm; Sun 11am-6pm	Thu-Sun	See Description	785.658.2602
The Midland Mercantile & Art Gallery	2711 Ave E	Wilson	The Midland Mercantile & Art Gallery features eccentric gifts perfect for any occasion, with local artwork, handmade goods, and souvenirs highlighting the Czech heritage of Wilson. Located in the historic Weber Peirano building, dating back to 1904. Free coffee, water, tea and cookies to BKRT visitors. Thu-Sat 9am-6pm; Sun 10am-4pm	Thu-Sun	See Description	785.658.2284
Wilson Wine & Spirits	521 27th St	Wilson	Kansas makes some fine spirits. You'll find wine, whiskey and beer made in Hays, Wichita, Salina, Dodge City, Atchison and Lawrence. BKRT visitors receive a 10% discount off any spirits. Thu-Fri 11am-10pm; Sat 10am-10pm; Sun 12-6pm	Thu-Sun	See Description	785.658.3431

Experience

EVERYTHING

We have to offer!

Serving Central Kansas for over a century, Wilson Communications offers the services you need to keep your home or business connected...all over a start-of-the-art fiber optic network!



This institution is an equal opportunity provider and employer.



Welcome to Wilson

From Feeding the Children of Central Kansas

Home of The Czech Community Room



Learn More



SHOP STOPS

Lincoln County

SHOP STOP	ADDRESS	CITY	DESCRIPTION	DAY(S)	HOURS	PHONE
G&G Resale Shop	139 E Lincoln Ave	Lincoln	The G&G Resale Shop in downtown Lincoln (across from the Art Center) has a large assortment of unusual collectible and antique items. Find your next collectible item or furniture piece. Cash or check.	Thu-Sat	9am-5pm	913.488.1500
Lincoln Building Supply	1111 N 5th St	Lincoln	This isn't just your typical lumber yard! There's a coffee shop in addition to the offerings of lumber, paint and farm/ranch products. Pick up hot or cold coffee, smoothies, bottled water, Black Rifle Coffee, and three flavors of bierocks. Special prices on drinks and bierocks during BKRT. Thu-Fri 8am-5pm; Sat 8am-3pm	Thu-Sat	See Description	785.524.4416
Mrs. B's Floral and Nursery	811 N. 6th St	Lincoln	Shop for a variety of annuals, perennials, decorative potted containers, hanging baskets, and vegetables in Mrs. B's seasonal greenhouse. Fresh cut flowers, and houseplants in the Floral Shop open all year around. Thu-Fri 9am-5:30pm; Sat 9am-1pm; Sun 1-3pm	Thu-Sun	See Description	785.524.5118
Seirer's Clothing	143 W Lincoln Ave	Lincoln	Rural boutique established in 1984 and located in the heart of Kansas. Offering a variety of hand-selected items for the whole family. Celebrating their 40th birthday this July! Thu-Fri 10am-6pm; Sat 10am-4pm	Thu-Sat	See Description	785.524.4752
The KC Quilting Company	139 W Lincoln Ave	Lincoln	Find quilts, quilting fabric, notions and long-arm quilting services inside Village Lines. BKRT visitors will receive 20% off fabrics. Thu-Fri 10am-5pm; Sat 9:30am-5pm; Sun 12-4pm	Thu-Sun	See Description	785.472.7175
Village Lines	139 W. Lincoln Ave	Lincoln	Since 1986, Village Lines has been promoting Kansas works of artists, authors, and craftsmen. Gifts of wheat, limestone, wood, and books are found here. BKRT visitors can look forward to free Sunflower Seed cookies and choice of sparkling cold fruit soda or tea - and making new friends around the gathering table. Thu-Fri 10:30am-5:30pm; Sat 10:30am-4:30pm	Thu-Sat	See Description	785.524.5133
Knotheads and Kayak Zach at Wilson lake	132 E Shoreline Rd	Sylvan Grove	Nestled in the hills overlooking Wilson Lake, this is the source for kayak rentals, fishing supplies, maps for hiking trails and local fishing reports. Learn more about the Knotheads Extreme Ironman 9, a 24-hour bowfishing tournament. Thu 7am-6pm; Fri-Sat 7am-7pm; Sun 8am-5pm	Thu-Sun	See Description	785.658.2166
Labertew Apiaries / Labertew Honey	112 N Main	Sylvan Grove	This family-owned bee business has been producing and selling local raw honey since 1989. They are a busy bee family that looks after 1,400 hives! Open daily, 7am-7pm. Cash and checks only.	Thu-Sun	See Description	785.658.5519





SHOP STOPS

City of Lucas

SHOP STOP	ADDRESS	CITY	DESCRIPTION	DAY(S)	HOURS	PHONE
Brant's Meat Market	125 S Main	Lucas	Find a variety of specialty and homemade sausages, cheeses, bologna, fresh steaks, beef jerky and local products in this legacy business. The Brant Family opened the store in 1922 and operated it until 2018, when Adam and Ashley Comeau purchased the market and continued making the traditional Czech recipes. See the old in the brass foot rail and original mural and the new in the renovations to the building's interior.	Thu-Sat	9am-5pm	785.525.6464
Cookie Jar Quilting & Embroidery	218 North Harvest W	Lucas	Have you ever watched a long-arm quilting machine in action? It's mesmerizing! Stop by to watch or bring a piece for a custom long arm quilting job and embroidery. There will be a 10% discount on quilting booked during the BKRT. Look for special KU and KSU items for sale.	Sat	10am-3pm	785.469.7146
Leach & Naegele Hardware	206 S Main	Lucas	Leach & Naegele is a hardware, electrical and plumbing business in an 1894 limestone building that has a little bit of everything. Open for 77 years, it's owned today by Mayor Trent Leach and his wife Lyn. The first 25 BKRTers to stop will receive a cool engraved 11-function multi-tool with pouch! Thu-Fri 8am-5pm, closed 12-1 for lunch.	Thu-Fri	See Description	785.525.6265
Lynn's Glass Works & Laser Engraving	120 S Main	Lucas	A small Main Street boutique specializing in art glass and locally made souvenirs of Lucas, including wooden nickels, patches, stickers, ornaments, license plates, drink ware, and t-shirts. Thu-Sat 9am-3pm	Thu-Sat	See Description	785.658.5917
Switchgrass Studio	208 S Main	Lucas	Inside this 100-year-old limestone building is a non-profit art cooperative created by community artists and volunteers. More than 2,300 pieces of original artwork made by 21 area artists are for sale, along with art supplies and thrift store finds. Make and take your own art during the BKRT. Thu-Sat 8am-5pm; Sun 8am-4pm	Thu-Sun	See Description	NA
Victorian Geckos	135 S Main	Lucas	Meet Leopard and Crested geckos that have been born and bred in Lucas. The owner has created her own lines of these geckos by selectively breeding certain genes to achieve certain looks. The geckos are shipped throughout the nation! This is a rare opportunity to interact with these reptiles.	Fri-Sat	10am-3pm	785.324.9300



CHURCHES OF HOLYROOD OPEN HOUSE

Visit three churches in this town of 410 population. Each have historic architecture, statues with stories, and beautiful, imported stained glass - both historic and modern. Discover which church reclaimed its early 1900s German-made stained glass windows for use in its current building! Host present on each site.

Fri-Sat 1-3pm

- St. Paul's UCC, 301 E Nassau (pictured)
- St. Peter Lutheran Church, 209 S County Rd
- St. Mary's Catholic Church, 202 S Frank



CHURCHES OF WILSON OPEN HOUSE

Visit four churches in Wilson with impressive Gothic and Romanesque architecture and stained glass. The Methodist Church is the oldest, constructed from native limestone in 1888. The Baptist Church invites you for refreshments.

- First Baptist Church, 2710 Ave A, Fri 10am-4pm
- First Presbyterian Church, 319 24th St, Fri 1-4pm
- St. Wenceslaus Catholic Church, 2811 Ave D, Fri 1-4pm
- United Methodist Church, 611 24th St (pictured), Fri 1-4pm



Bluestem
 QUARRY and STONWORKS

115 W 2ND ST
 LUCAS, KS 67648

REAL stone... TIMELESS BEAUTY. STYLE. DESIGN. Don't settle for anything less

785.259.0977



BRANT'S MARKET

LUCAS: (785) 525-6464
 PLAINVILLE: (785) 688-4350

125 S. Main St., Lucas, KS
 121 W. Mill St., Plainville, KS
 www.brantsmarket.com

ONE OF THE OLDEST MEAT MARKETS IN THE COUNTRY, HANDCRAFTING QUALITY MEATS SINCE 1922.

MAKING AN IMPACT!

**SO MANY PLACES TO GO,
 SO MUCH TO DO, SO MUCH
 IMPACT TO MAKE**

This is the chance for the smallest of towns to pull out the stops and invite visitors to their town to show what they have to offer. Ten incorporated communities, and several that are unincorporated, are found in these two counties plus Lucas. If you choose an activity, restaurant, business or attraction in one of these towns, they'll be mighty pleased to see you. You've got lots of choices: 121 attractions, 59 events, 36 restaurants or food events and 30 shop stops.

Good luck with your planning!



Don't get caught with FOMO!

(fear of missing out)

The Kansas Explorers Club has great gear for purchase today or at any of The Stumps during the BKRT!

See you on the road!

kansassampler.org/shopping



Thanks to ALL of our great advertisers throughout the BKRT guide. We couldn't have done it with out you!



KANcycle
Bike Sharing for Rural Kansas

BIKES AVAILABLE TO RENT
Locations in Mankato and Belleville
www.kancycle.org



We have everything bath, body, and skin care related. We also offer woodwork, apparel, art, and laser engraved products. We make everything locally.

**108 E 1st St.
Ellsworth, KS 67439
785-810-8698**

During BKRT weekend, we will have goodie bags and special discounts.

www.windingcreeksoapandsupply.com



THURSDAY - 5PM-8PM
FRIDAY - 5PM-10PM
SATURDAY - 5PM-10PM
SUNDAY - 11AM-2PM

105 N. MAIN ST.
SYLVAN GROVE, KS, 67481
785-526-7800



JULY 25 - 28

NICODEMUS KANSAS

HOME COMING
2024

Journey Of Triumphs - 146 Years Of Excellence

Nicodemus National Historic Site - The Oldest Remaining Black Settlement West Of The Mississippi Established At The End Of Reconstruction.



WELCOME BKRT 2024!

Enjoy captivating views and eventful destinations!

Walk-In Services

M-F: 8am - 5:30pm
Sat: 8am - 12pm

RUSSELL REGIONAL HOSPITAL

RUSSELL
REGIONAL HOSPITAL
www.russellhospital.org



Czech Capital of Kansas

City of Wilson

WE WELCOME YOU!

181 Ag Supply



Sylvan Grove, Ks
785-420-7037

Family-owned and operated.

181 Ag Supply offers a wide range of ag supplies at affordable prices.

Your Authorized
PURINA Dealer



PURINA

306 W Old Hwy 18 Sylvan Grove, KS 67481

OPENING SOON - AN EVENT CENTER FOR SYLVAN GROVE!

THE WAREHOUSE

FOR RESERVATIONS: 785-526-7352
lorelei.dohl@yahoo.com

129 S. Main
Sylvan Grove, KS

- Attached Outdoor Courtyard
- Unique Architecture
- Historical Elements
- Caterers Ready to Serve You



INNOVATION
-CENTER-

"You need a *village* to raise a family & Lincoln County is definitely our *village*."



MakeMyMove

Inquire Now!

(785) 874-5150

nwkeici.org

INCENTIVES
INCLUDE

**\$5,000
& UP**

Northwest Kansas is THE place to move with an extensive investment and county commitment to the MakeMyMove® program.

Incentives, signing bonuses and networking opportunities for remote workers and their families. We'll help you find your happy place, and you'll get paid to move HERE.

A GETAWAY THAT'S NOT FAR AWAY

EXPLORING CRAWFORD COUNTY IN SOUTHEAST KANSAS

OUR STORIES

FRIED CHICKEN

Six of the oldest chicken houses in Kansas are in Southeast Kansas.

But why?

Long before the "straight shot" route of US-69 that connects Fort Scott to Pittsburg, the original route of the national highway weaved through the mining communities of that time. **Chicken Annie's** (1934), **Chicken Mary's** (1942), **Gebhardt's** (1946), and **Barto's Idle Hour** (1951) were along that route, providing travelers a cheap, delicious meal.

More importantly, they opened during the heyday of the regions mining industry, and served families who survived the Great Depression, the Dust Bowl, and two World Wars.

They were an affordable, social, and comforting escape from real hardship.

They still are.



A TOUR UNLIKE ANY OTHER

GORILLA NATION

Thousands of gorilla statues are scattered across Southeast Kansas. Why? This is the home of the only college in the nation with a gorilla as its mascot: **Pittsburg State University (PSU)**. The "Gorillas" started as a student pep club in 1920, and at the time, it was slang for "roughnecks" and "untamed rowdiness". The largest gorilla sculpture towers over guests at **Champions Plaza** on the PSU campus.



SPECIAL EVENTS

FESTIVALS

Once upon a time, food, dancing, games, parades, and storytelling were an excuse for immigrants, neighbors and guests to meet, share diverse cultures, and create new traditions. In Southeast Kansas, some things never change.

Every community still hosts an annual event of some kind: from Pittsburg's **Little Balkans Days Festival**, **Spring ArtWalk** and **Fall ArtWalk**, to the **Frontenac Mining Days**, and various **Fall Festivals**.

Even PSU international students host celebrations open to the community, including **Holi Festival of Colors**, **Diwali Festival of Lights**, and the very popular **Global Fest International Night Market**. And new events are always starting up, such as the **Southeast Kansas Bed Race Derby**, and the **Coal Miner's Century**.





Cutting edge Medical
Tech, right here in

ELLSWORTH COUNTY

Our campus is designed to elevate your healthcare experience to new heights. Discover the cutting edge medical solutions and exceptional care that sets us apart from the rest!



Why Choose Us?

- ✓ Personalized Care Plans
- ✓ State Of The Art Technology
- ✓ 4 Rural Health Clinic Locations
- ✓ Extensive List of Specialty Services
- ✓ Comprehensive Wellness Programs
- ✓ Emergency, Inpatient, & Outpatient Care

About Us:

Your health & well being are our top priorities. Through compassion, service, integrity, & stewardship we aim to be recognized as **PROVIDER OF CHOICE** within the communities we serve.

DEDICATED TO IMPROVING LIVES



785-472-3111



ewmed.com



1604 Aylward Ave, Ellsworth, KS 67439

TO THE EXPLORERS



KANSAS
TO THE STARS

If someone tells you to take a hike, we know the perfect place to go. And the view is always worth the trek.

The Kansas experience is a salute to the adventures. To the outdoors. To the trails. To the stars.