

BIGKANSASROADTRIP.COM



May 5-8, 2022

See what BIG surprises await
in Southeast Kansas!

Bourbon ★ Cherokee ★ Crawford



WELCOME TO CHANUTE

Things to do...



Martin & Osa Johnson Safari Museum
Octave Chanute - Wright Brothers Memorial
Chanute Historical Museum
Chanute Art Gallery
Historic Austin Bridge
Veterans Memorial
Summit Hill Gardens Soap Shop
Cardinal Drug Store Old-Fashioned Soda Fountain
Howard's Toys for Big Boys Automotive Museum

*Road
Trip*

Pit Stop



Santa Fe Park - fishing lake, disc golf, play pods, exercise area & walking trail
Katy Park - basketball, handball, pickle ball, skateboard & accessible park
Central Park - playground, horseshoes & pavilion
Cross Park - basketball & playground

Highland Park - picnic area, tennis, accessible playground & spray park

Maring Aquatic Center - party room, pool, slide & lazy river

SO MUCH MORE TO SEE & DO!

Scan Here to Start Planning Your Adventure



**LOCATED IN THE
HEART OF SE KANSAS**



Chanute Area
Chamber of Commerce
& OFFICE OF TOURISM
connecting THE community

21 N. Lincoln-620-431-3350
information@chanutechamber.com

HIT THE ROAD

Big Kansas Road Trip

INFORMATION CENTERS

BOURBON COUNTY

Fort Scott Area Chamber of Commerce

231 E. Wall St., Fort Scott
620.223.3566
Thursday - Friday: 8am-5pm
Saturday: 10am-2pm

CHEROKEE COUNTY

Baxter Springs Heritage Center & Museum

740 East Ave., Baxter Springs
620.856.2385
Thursday - Saturday: 10am-4:30pm
Sunday: 1-4pm

CRAWFORD COUNTY

Girard Public Library

128 W. Prairie Ave., Girard
620.724.4317
Thursday: 9:30am-6pm
Friday: 9:30am-5pm
Saturday: 9am- 2pm

Columbus Public Library

205 N. Kansas Ave., Columbus
620.429.2086
Thursday - Friday: 9am-6pm
Saturday: 10am-12pm

Pittsburg Public Library

308 N. Walnut, Pittsburg
620.231.8110
Thursday: 9am-8pm
Friday: 9am-5pm
Saturday: 9am-4pm
Sunday: 1-5pm

Galena City Hall

211 W. 7th St., Galena
620.783.5265
Thursday - Saturday: 8am-4:30pm

Weir Public Library

111 E. Main, Weir
620.396.8899
Thursday - Saturday: 9:30am- 6pm
Sunday: 12-5pm

Look
for the
signs



Participating BKRT venues will be
designated with signage



Look on
Facebook →



Look
Online →

BIGKANSASROADTRIP.COM





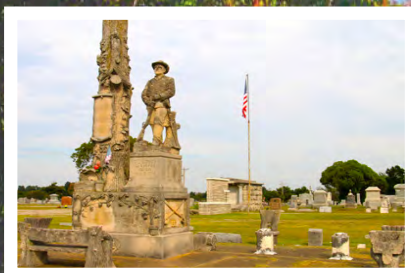
INSIDE

- | | | | |
|-----------|---------------------------------------|-----------|-------------------------|
| 3 | Information Centers | 22 | Restaurant Guide |
| 7 | What is the Big Kansas Road Trip? | 30 | Map of Bourbon County |
| 8 | Picking the Southeast | 31 | Map of Cherokee County |
| 9 | How does it work? | 32 | Map of Crawford County |
| 11 | The Kansas Guidebook Resource | 33 | Shop Stops |
| 13 | BKRT Explorers Club Auto Bingo | 36 | Special Events |
| 14 | Bourbon County | 37 | Stumpin' for Kansas |
| 16 | Cherokee County | 41 | County Attractions |
| 18 | Crawford County | 50 | Join the Explorers Club |
| 21 | Who is the Kansas Sampler Foundation? | | |

The 2022 Big Kansas Road Trip Guide was produced by FAB Creative Services LLC, producers of Southeast Kansas Living magazine, in collaboration with the Kansas Sampler Foundation (KSF). Most photos have been provided courtesy of KSF. Every effort has been made to ensure accuracy of content published in the guide. However, we assume no responsibility or liability for errors or omissions in this guide. Reproduction without permission is strictly prohibited.

*Come
See*

CHEROKEE COUNTY



- Baxter Springs City Cemetery Soldiers' Lot
- Baxter Springs Heritage Center & Museum
- Big Brutus
- Cars on the Route
- Cherokee County Courthouse
- Columbus Museum & Genealogy Library
- Fort Blair Historic Site
- Frontier Military Historic Byway
- Galena Mining & Historical Museum
- Heart of the Heartlands Railroad Museum & Carona Depot Complex
- Kansas Route 66 Historic Byway
- Kansas Route 66 Visitors Center
- Luigi's Pit Stop
- Mined Land Wildlife Area
- Nelson's Old Riverton Store
- Rainbow Bridge
- Schermerhorn Park
- Seth Thomas Clock Tower
- Tri-State Marker

*Plus
Much
More!*



Learn more about CHEROKEE COUNTY

Baxter Springs
Chamber of Commerce
620-856-3131

City of Galena
620-783-5265

Cherokee Co. Economic
Development Corp.
620-762-0717

Columbus Chamber
of Commerce
620-429-1492

BAXTER SPRINGS | COLUMBUS | GALENA | ROSELAND | SCAMMON | WEIR | WEST MINERAL



What's it all about?

Big Kansas Road Trip

Have you viewed the Marsh arch bridge at Riverton (Cherokee County) where Route 66ers drove? Have you noticed the locally-made bricks on the Fort Scott (Bourbon County) streets? Do you know about the *Little Blue Books* (Girard, Crawford County) and their significance?

You can hear about these things or see them in a brochure, but it can't compare to walking across the bridge that is a relic of history, or stomping on bricks that were also used in construction of the Panama Canal, or holding one of the 500 million copies of the *Little Blue Books* in your hands at the Girard Public Library.

The Big Kansas Road Trip (BKRT) is about being there. It's about sinking your teeth into an over-easy breakfast egg at Bob's Grill in Pittsburg, looking up to the Civil War Statue in the Bronson city park, and smelling the grilled onions at Red Ball Bar & Grill in Baxter Springs (Cherokee Co.). The BKRT is about the full effect, all five senses in action. The difference is immense in reading about a place and having first-hand experiences.

Kansas Sampler Foundation director Marci Penner said, "We've asked these three counties to just be themselves. If they want to add some scheduled activities, that is up to them, but all we really want is to

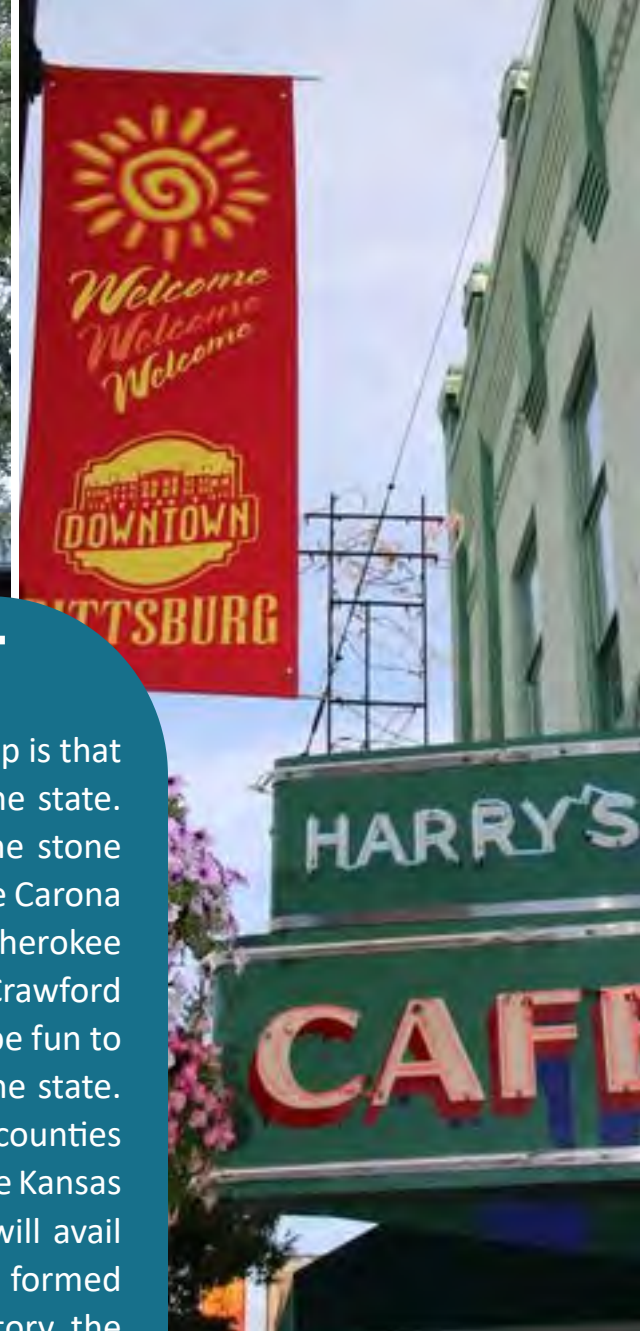
create an open-house atmosphere where visitors feel welcomed and locals can show what they have and who they are in a low-key manner."

Geoffrey Allison, co-producer of *Uncovering Kansas*, explains his experience at the 2018 event this way, "In the background of the BKRT is a vibe. There's a rhythm of hospitality offering a consistent experience not typically available to travelers. Because these small towns were expecting visitors, they were ready and willing to engage."

Though the Inman-based Kansas Sampler Foundation facilitates the organizing of the BKRT, it's local leadership that does the work in the counties. Led by Lindsay Madison and Jackson Tough in Bourbon County, Liz Simpson and Janet Miller in Cherokee County, and Dave Looby and Chris Wilson in Crawford County, there are many people involved in getting ready to roll out the red carpet.

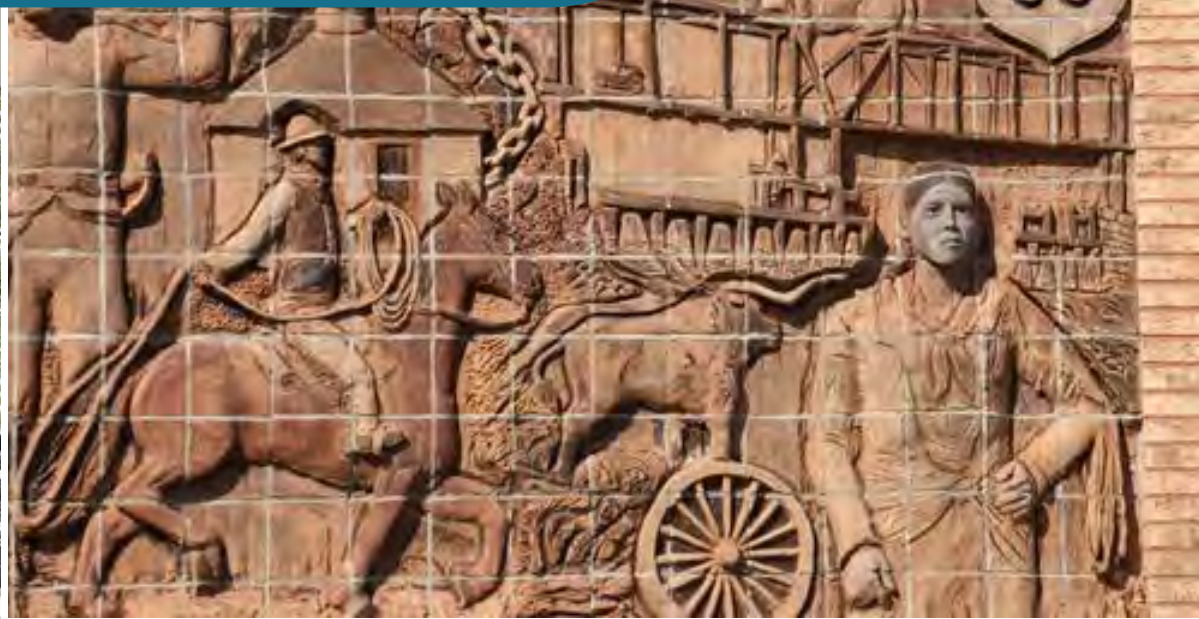
Penner said to the exploring public, "You get to pick and choose your own adventure concentrating on what you like best. You choose your own schedule and travel at your own pace. Your curiosity should direct you. Talk to the locals. And, just have fun!"

Three counties. Four days. Hundreds of people. All seeing rural southeast Kansas with new eyes. ✨



CHOOSING THE SOUTHEAST

One of the very fun things about the Big Kansas Road Trip is that it can lead people to places they've never been in the state. Feeling fairly confident that few Kansans have been to the stone doll houses in Gunn Park in Fort Scott (Bourbon County), the Carona Depot Complex and Railroad Museum near Scammon (Cherokee County), or the 1896 historic water tower in Cherokee (Crawford County), the Kansas Sampler Foundation thought it would be fun to lead people to the three most southeastern counties in the state. Since we went to the most northwestern and northeastern counties in the last two BKRT's, why not continue the route around the Kansas rectangle to the southeast? Three physiographic regions will avail you to the oldest surface rocks in Kansas (limestone that formed about 345 million years ago), mining and early military history, the Frontier Military Scenic Byway, antique shops, great breakfast and burger stops, and chicken, of course, and the only miles of Historic Route 66 in the state. What more could an Explorer ask for?



HOW DOES IT WORK?

Just jump in your car and start exploring! Really. That's it. Caravan with friends or head out on your own. There will be some activities to help you get to know the rural culture of the area but be more spontaneous if you'd like. Part of the fun is acknowledging other people on the adventure, so buy a BKRT flag or put some kind of sign on your car so you can be identified.

- 1.** Select the activities you want to attend from a menu of choices. Find these schedules in this guide or pick up the day program at information centers in the three county seats. Listings in this guide are condensed for space considerations. **You can find more specific and detailed information on the bigkansasroadtrip.com website or the Big Kansas Road Trip Facebook page.**
- 2.** BKRT yard signs will be in front of participating entities and will indicate where to turn when out in the country.
- 3.** Make your own adventure. Take the scenic backroads, visit cemeteries, and enjoy the journey!

PRACTICE PATIENCE & KINDNESS

When you have an open house you seldom know how many people will show up. Will there be dozens, hundreds or thousands? How will the weather affect everything? Will there be enough bathrooms? How much food should a restaurant fix? How much staff should be scheduled? The public should know there won't be cell phone coverage everywhere and that some people will get lost. The unknown for both the locals and the visitors creates an opportunity for extending patience and kindness, helping each other, and making the variables part of the grand experience. Help make the story a good one!

DO YOUR QUEST YOUR WAY

Maybe you want to golf or eat pie in every county. Perhaps your quest is to walk a block in every city, buy \$18.61 worth of something in every county, or take a selfie with a local in every town. Whatever it is, do your thing!

IS THIS AN EVENT FOR KIDS?

You bet it is! What kid doesn't want to peek into a cave, take a picture with a gorilla or climb into the belly of Big Brutus? There are scavenger hunts and Explorer Auto Bingo to play and old-fashioned to new-fangled playground equipment to crawl on. See history firsthand, check out museums, hike trails, and stick your toes in the crystal clear Shoal Creek. Natural landmarks and local cafes are just as good for young as for old. Kids can touch, taste, see and run around on a trip that will nurture a love for Kansas and build the next generation of Kansas explorers! Yes, this is a wonderful family outing!



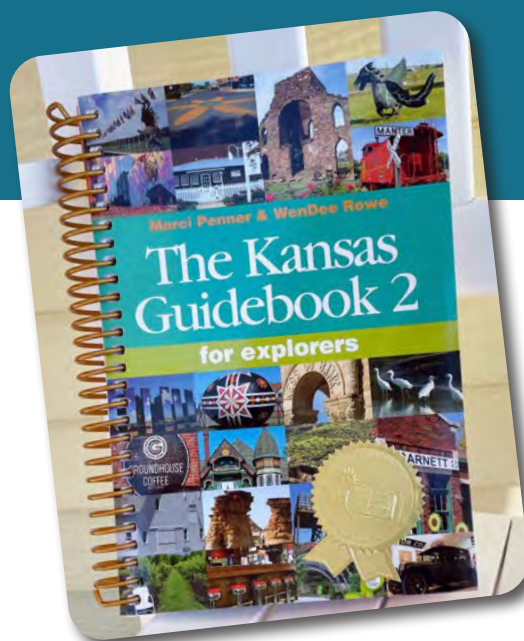
THINGS TO THINK ABOUT ON THE JOURNEY

- ✓ Bring lawn chairs.
- ✓ Gas up whenever you can. Not every town has gas pumps.
- ✓ It's a courtesy to bring rolls of toilet paper and offer them to businesses that are opening their bathrooms.
- ✓ Restaurants will serve until the food is gone.
- ✓ When you post, use **#BKRT2022**.

LODGING & RESTAURANTS

To find a list of lodging and restaurants in the three counties, please go to **bigkansasroadtrip.com**.

the go-to resource KANSAS GUIDEBOOK 2 FOR EXPLORERS



Co-authors Marci Penner and WenDee Rowe went to every one of the 627 incorporated cities in Kansas to research for the 480-page coil-bound guidebook. The 4,500 entries in the book come from 500 of those cities and 97 unincorporated spots on the map. Compiled into six regional sections, the entries include addresses, hours, websites, and descriptions. More than 1,600 pictures bring color to a statewide array of things to see and do. The book is a project of the Kansas Sampler Foundation and can be found in more than 240 locally-owned stores statewide. Look for the list and/or buy online at **kansassampler.org**.

Let the guidebook help direct you around to the main attractions in all three BKRT counties. Make sure to go to the **bigkansasroadtrip.com** site to find places that have opened since the guidebook came out.

kansassampler.org

eat. drink. innovate. gather. enjoy.



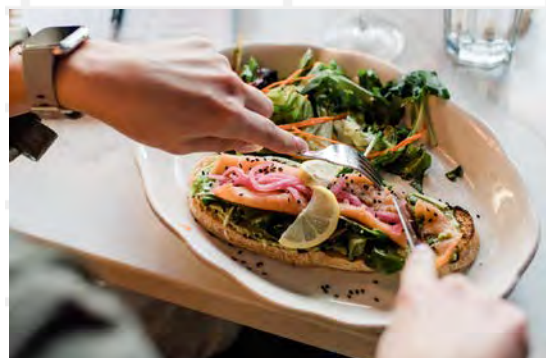
Funky. Fresh. Artisan Bread.
Local ingredients. Soups,
sammies, salads, drinks.



Scratch kitchen. Unique
appetizers. Mouthwatering
entrees. Craft cocktails.



Specialty coffees and teas.
Crepes. Little Free Library.
Local art. Open mic.



A mixed-use space in renovated historic buildings in the heart of Downtown
Pittsburg. Two restaurants and a coffeeshop & creperie. Urban lofts for
students. A Small Business Development Center. A makerspace.
Walking distance to shops. Entrepreneurism. Innovation. Community.

BKRT EXPLORER AUTO BINGO

How about adding a little adventure to your road trip? Cross off the squares below as you complete them. If we ask a question, write the answer in the square. When you've completed all that you can, send your form to: [Kansas Sampler Foundation, 978 Arapaho Road, Inman, KS 67456](mailto:marci@kansassampler.org) or scan and email to marci@kansassampler.org, or, even better, deliver your form in person at the Kansas Explorers Club meeting.

We'll draw a winner and send you a prize!

Read a plaque at Immigrant Park, Pittsburg	Drive across National Avenue Bridge, Fort Scott	Shop at Pallucca's Market, Frontenac	Walk Brush Creek Bridge, Route 66, near Riverton	Take your picture with Tow Mater, Galena
Find a brick stamped Fort Scott	Shop at Nelson's Old Riverton Store	Find the unsung hero carrier pigeon at Lowell Milken Center, Fort Scott	Touch a wood sculpture, Arma city park	Dip your fingers in Shoal Creek, Schermerhorn Park, near Galena
Touch brick water tower in Cherokee	Dip your finger in the Cherokee Courthouse fountain	FREE	Learn something about Gordon Parks	Find deer on Crawford County Courthouse lawn
Spot the Salted Pork barrel at Fort Scott National Historic Site	Find metal in tree at Franklin Park	Sit on bench at the T.J. Losey Memorial, Columbus City Cemetery	Stand beside a Civil War statue in Bronson	Visit a museum in Crawford County
Touch Eugene Ware glacial rock gravestone, Fort Scott National Cemetery	Find wooden chain in bas-relief mural, Baxter Springs	Spot doll house in Gunn Park, Fort Scott	Touch Tri-State marker, near Baxter Springs	What was your favorite place to eat in Crawford County?

Name _____

Address _____

Phone _____

Email _____

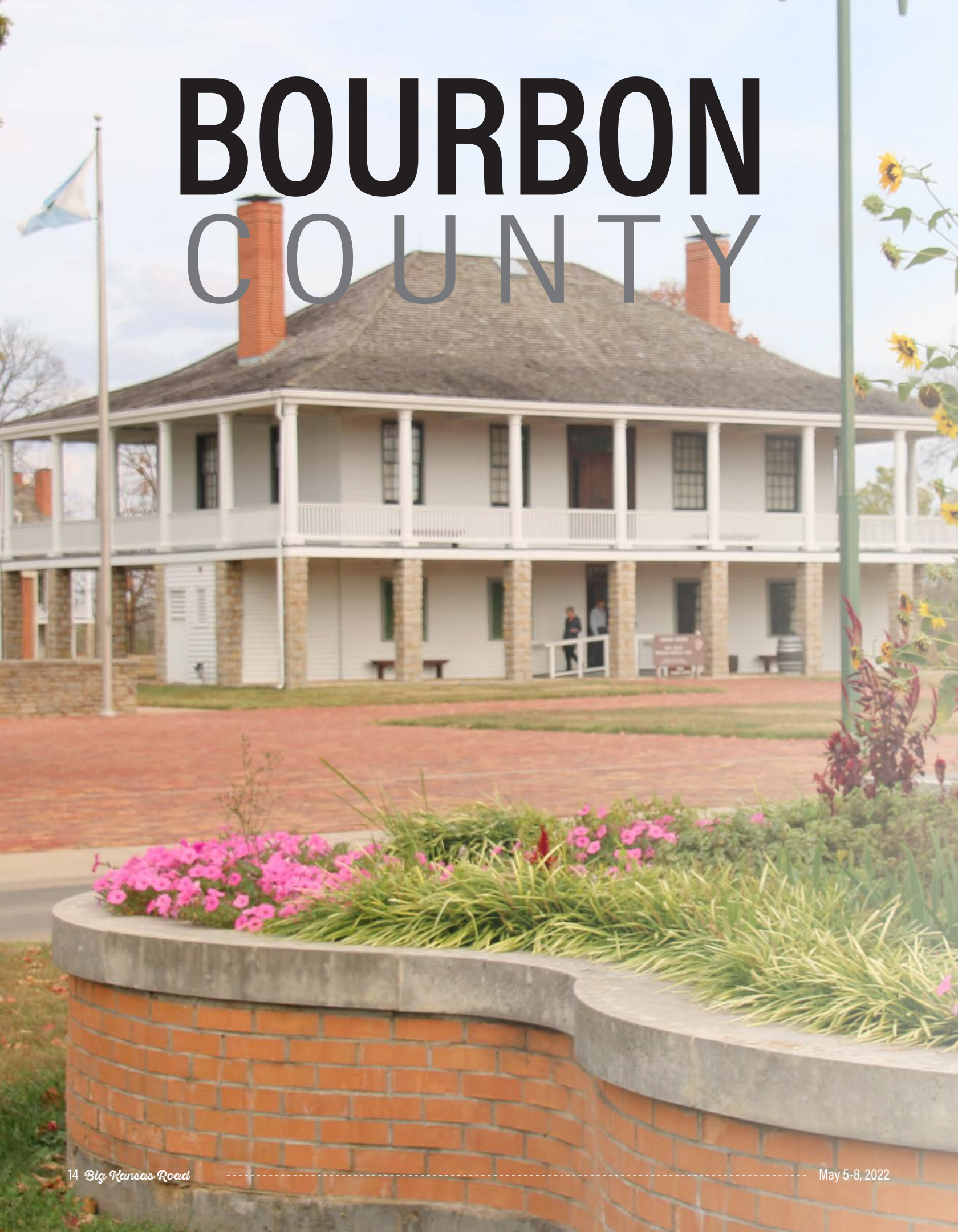
GET SOCIAL while you're road trippin'!

Show us all the fun you're having and great places you've explored!

#bkrt22



BOURBON COUNTY



One of the 33 original counties of Kansas, Bourbon County was named after a same-named county in Kentucky. In 1842 a fort was established, in what is now the county seat, the City of Fort Scott, and was named for General Winfield Scott. Now a national historic site, there is much to learn about the frontier era here. Gordon Parks, a pioneer for blacks in the fields of photography, filmmaking, and writing, was born in Fort Scott in 1912, which added another focus to the rich story of this area. You'll find out the story of unsung heroes, too, in the historic Fort Scott downtown district. Here is a sampling of things to see and

do in Bourbon County as listed in *Kansas Guidebook 2 for Explorers*.

Bronson, population 258. White bronze Civil War Statue, city park.

Fort Scott, population 7,742: Fort Scott National Historic Site, Fort Scott National Cemetery, trolley tour, Lowell Milken Center for Unsung Heroes, Gordon Parks Museum, Fort Scott Downtown Historic District, post office art, historic homes, Gunn Park, National Avenue Bridge.

Fulton, population 112: Marsh arch bridge

Near **Mapleton**, population 116: Kansas Rocks Recreation Park.



Cherokee is the only county in the state that can lay claim to the Ozark Plateau physiographic region, mileage on Historic Route 66, and the largest still-assembled electric coal shovel, Big Brutus. Baxter Springs was the first “cow town” in Kansas, is home to some grueling Bleeding Kansas history, and Mickey Mantle played baseball here. The second most famous ball of string is found in the Columbus Museum, an old-fashioned market is located in Riverton, Galena is where you’ll find the inspiration for the movie *Cars* Tow Mater character, and Weir’s Frank Rose invented the flyswatter in 1905!

Here is a sampling of things to see and do in Cherokee County as listed in *Kansas Guidebook 2 for Explorers*.

Columbus, population 3,086: Cherokee County Courthouse, courthouse square,

Columbus Museum, post office art, T.J. Losey Memorial, Carnegie Library, WPA structures at city park.

Galena, population 2,892: Galena Mining and Historical Museum, Schermerhorn Park, Southeast Kansas Nature Center, Pappy Litch Park, Liberty Hall, Cars on the Route.

Hallowell, unincorporated: Angelo’s Deli.

Riverton, unincorporated: Nelson’s Old Riverton Store, kiosks, Brush Creek Bridge, Historic Route 66.

Scammon, population 574: St. Bridget Church, Carona Depot & Railroad Museum.

Weir, population 659: water tower, restored Texaco station, Hosey Hill Cemetery.

West Mineral, 129: Big Brutus, mined land wildlife areas.



CHEROKEE COUNTY



The only reframe for a mining accident is that two of them led to the creation of Chicken Annie's and Chicken Mary's. Today, you can find chicken throughout the county. Each place is a little different so have fun deciding where to eat. The burgers and breakfasts are also fabulous in this 10-city county that is also home to the Pittsburg State University Gorillas, a banana tree or two, and mined land pits galore. Mining history, a thriving Pittsburg downtown, some of the best creamy Italian sauce anywhere, a multi-generation bread bakery, a famous long sidewalk and a deer on the courthouse complex in Girard can be found in the county.

Here is a sampling of things to see and do in Cherokee County as listed in *Kansas Guidebook 2 for Explorers*.

Around the county: Crawford State Park, Civilian Conservation Corps Memorial and Museum.

Arma, population 1,385: Arma mural, veterans memorial, Ed Babcock wood sculptures

Cherokee, population 849: historic water tower, Mined Land Scenic Back Road, Idle-A-While bar.

Franklin, unincorporated: Miners Hall Museum,

Franklin Community Park and Memorial Garden, longest sidewalk, Jefferson Highway, Strip Pit Alley Scenic Drive.

Frontenac, population 3,400: Pallucca's Market, Wilderness Park, Barto's Idle Hour Steak House.

Girard, population 2,707: Crawford County Courthouse, the deer, Huey helicopter, Carnegie Library, *The Appeal to Reason*, *Little Blue Books*, historical driving tour, Chicken Annie's of Girard.

Greenbush, unincorporated: St. Aloysius Historic Site.

Mulberry, population 378: Gebhardt's Chicken.

Pittsburg, population 20,171: Miners' Memorial, Immigrant Park, Carnegie Library, Solidarity Mural, Hotel Stilwell, Pittsburg State University Veterans Memorial Amphitheater, Timmons Chapel, Professors' Row, Crawford County Historical Museum, Signet Coffee Roasters, Chicken Annie's Original, Chicken Mary's, Pichler's Chicken Annie's, Jim's Steakhouse, Bob's Grill, Otto's Cafe, Mall Deli, Typhoon Grill, Mount Olive Cemetery, Highland Park Cemetery, banana tree, Memorial Auditorium, Lincoln Park.





"PITTSBURG STATE UNIVERSITY
HONORS OUR SONS AND DAUGHTERS
WHO ANSWERED THE CALL
OF THE NATION.
WE ARE EVER GRATEFUL
FOR THEIR MANY SACRIFICES
IN PEACE AND WAR
THAT FREEDOM WOULD PREVAIL."

CRAWFORD COUNTY



Gunn Park Shelter House #1



Gordon Parks Museum



Lowell Milken Center
for Unsung Heroes



U.S. National Cemetery #1



TOP 10 FORT SCOTT "MUST-SEE'S"

1. Fort Scott National Historic Site
2. Historic Downtown Fort Scott
3. Lowell Milken Center for Unsung Heroes
4. Gordon Parks Museum
5. Dolly the Trolley
6. Gunn Park
7. U.S. National Cemetery #1
8. LaRoche Baseball Complex
9. Woodland Hills Golf Course (top 10 in KS)
10. Kansas Rocks 4x4 Recreation Park

www.VisitFortScott.com
and Visit Fort Scott on Facebook!

Present this coupon for a
FREE TROLLEY TOUR!

Valid for up to 4 people. No cash value.
 Valid for regularly scheduled 50 minute
 tours only. Expires 9/3/22

Fort Scott, Kansas

Relax - Renew - Reconnect - Relive



WHO IS THE KANSAS SAMPLER FOUNDATION?



The Inman-based Kansas Sampler Foundation is a public, non-profit organization with a mission to preserve and sustain rural culture.

With 2½ employees (Marci Penner, WenDee Rowe, Kim Clark) and a board of directors (Sarah Werner, Winfield; Stacy Barnes, Greensburg; Simone Elder, Leoti; Dave Procter, Manhattan; and RJ Wilson, Shawnee), the KSF

relies on a strong statewide network to help accomplish projects like the Big Kansas Road Trip. Some other projects include the Kansas Explorers Club, the *Kansas Guidebook 2 for Explorers*, the 8 Wonders contests and guidebook, the We Kan! Conference, We Kan! awards, the Big Rural Brainstorm, and the PowerUp Movement.

WHAT IS THE KANSAS EXPLORERS CLUB?

The Kansas Explorers Club is a fluid group of people who love Kansas and want to get to know her better. The membership club, a project of the Kansas Sampler Foundation, was created to inspire, educate, and encourage the exploration and appreciation of Kansas...and to have fun doing it.

Membership is \$18.61 for individuals and \$30 for families. Members receive six print newsletters a year, a membership card, and knowledge of the secret

greeting ritual. Members are made aware of fun gatherings not available to the general public.

* * * * *

*Everyone is invited to the Kansas Explorers Club meeting on **SUNDAY, MAY 8** at 10 a.m. at the Franklin Community Park, Broadway and Fifth, in Crawford County, north of Frontenac just off U.S. 69. We'll announce the showcase counties for 2023 at this meeting. **BRING A LAWN CHAIR!***

KANSAS EXPLORERS HAVE ASSURED BKRT SUCCESS

The popular Kansas Sampler Festival had come to an end after 28 years in 2017. Would people embrace a new concept? Would anyone come to the first-time Big Kansas Road Trip in 2018? Nobody knew for sure.

But there was one group that knew what they had to do. They knew they needed to be the core audience and help show how to participate in this new event. That they did. It was more than a couple of hundred Kansas Explorers Club members from all over the state who turned out to show how to explore with joy and purpose.

In general, members have learned that buying stamps in small-town post offices helps increase revenue. Revenue plus the number of post office boxes, number of bulk rate permits, and amount of mail are some of the determinants of salaries and open hours for a post office. When you find an open post office on the 2022

BKRT, please buy!

Explorers know that for a wholesale truck to even stop at a grocery store, the store must buy at least \$10,000 worth of groceries a week. Since many small stores can't do that, they sometimes share orders with another store or buy their inventory from a big box store. It certainly isn't easy and owners work long hours. If you can, buy \$18.61 worth of groceries in small grocery stores during the BKRT.

Those who work in historic theaters, museums, golf courses, art galleries, and, well, just about any business or organization in these three counties could use a pat on the back or a friendly word and will enjoy conversations with you.

Whether you are an official Kansas Explorer Club member or not, your attendance is meaningful and your actions can help decide the success of the 2022 BKRT. Thank you all!



RESTAURANT GUIDE

BOURBON COUNTY

RESTAURANT	ADDRESS	CITY	HOURS	HIGHLIGHTS	PHONE
Spanky's Chicken Shak	704 Clay St.	Bronson	Fri-Sat 4-8pm, Sun 11am-8pm	Fried chicken and catfish dinners. Come early, they often sell out!	620.228.5228
Aunt Toadies	1411 E. Wall St.	Fort Scott	Thu-Fri 11am-8pm, Sat 4-8:30pm	Almost everything we serve is made from scratch. Our food is just like Grandma used to fix.	620.223.5007
Common Ground Coffee Co.	12 E. Wall St.	Fort Scott	Thu-Sat 7am-9pm	Specialty drinks, scrumptious foods and a contemporary interior and patio.	620.223.2499
Crooner's	117 S. Main St.	Fort Scott	Thu-Sat 5-9pm	Soft jazz and martinis go with steak, seafood, pasta, and chicken dishes. Desserts are worth singing about too.	620.224.9787
Dry Wood Creek Cafe	750 S. National Ave.	Fort Scott	Thu-Sun 9am-9pm	Enjoy a meal of traditional American fare in a lavish Victorian mansion (formerly one of the Twin Mansions). T-shirt giveaways for BKRT visitors.	620.224.2970
El Charro	2503 S. Main St.	Fort Scott	Thu 11am-9pm, Fri-Sat 11am-10pm, Sun 11am-8pm	Decorations are a must-see while the authentic Mexican food is a must-taste! Daily lunch, dinner, drink specials.	620.223.9944
Holmtown Pub	206 N. National Ave.	Fort Scott	Thu 11am-10pm, Fri-Sat 11am-2am, Sun 3-10pm	Locally-owned family pub with a diverse menu, mixed drinks and the coldest beer in town.	620.223.1477
Hot Wok Chinese Buffet	1511 S. National Ave.	Fort Scott	Thu-Sun 11am-9pm	Chinese buffet, online orders and delivery within 3 miles.	620.223.0588
La Hacienda	24 N. Main St.	Fort Scott	Thu-Sat 11am-9pm, Sun 11am-3pm	Mexican food, margaritas, daiquiris, special cocktails and domestic and imported beer.	620.223.4400
Lucci's Cafe	101 E. State St.	Fort Scott	Thu-Sat 7am-9pm, Sun 7am-3pm	Breakfast, lunch and dinner menu.	620.644.3490
Luther's BBQ	3 W. Oak St.	Fort Scott	Thu-Sun 11am-9pm	This upscale BBQ suggests their burnt ends, brisket, deviled eggs, salads and sandwiches.	620.644.9880
Marsha's Great Plains Deli	6 W. 18th St.	Fort Scott	Thu-Sat 10:30am-7pm	Fresh deli sandwiches and homemade sides.	620.223.6432
Max's Way Station	902 N. National Ave.	Fort Scott	Sat-Sun 6am-2pm	Comfort food, daily specials served in a traditional diner.	620.223.2931
Nu Grille	24 N. National Ave.	Fort Scott	Thu-Sat 7am-8pm, Sun 7am-2pm	Serving breakfast, lunch and dinner since 1946! Known for burgers, fresh-cut fries and homemade Suzie Q's and pie ala mode.	620.223.9949
Papa Don's Pizza	10 N. Main St.	Fort Scott	Thu-Sat 10:30am-8pm	Made-from-scratch dough with olive oil. By the slice for lunch, salad bar, hand-dipped ice cream, gelato, spaghetti, deli sandwiches and bread/cheese sticks. Gluten-free and low-carb options.	620.223.4171
Penny's Diner	2505 US 69	Fort Scott	24/7	The 1950s style diner serves American classics like hamburgers, old-fashioned sundaes, and their famous malts — all made from scratch.	620.955.4283

CHEROKEE COUNTY

Bricks & Brews	1531 Military Ave.	Baxter Springs	Thu 11am-10pm, Fri-Sat 11am-12am, Sun 11am-8pm	A cool urban industrial interior serves wood-fired pizza and a full bar. Locals order the Voodoo Pizza and a side of stuffed mushrooms. Located on Route 66.	620.304.2056
Don Juan's Mexican Restaurant	2320 Military Ave.	Baxter Springs	Thu-Sun 11am-8pm	Delicious Mexican food, made fresh everyday!	620.856.4000
Donut Palace	1508 Military Ave.	Baxter Springs	Thu-Sun 5am-12pm	Locals love the variety of donuts. Favorites go fast.	620.304.2103
El Cabritos	2135 Military Ave.	Baxter Springs	Thu 11am-8pm, Fri-Sat 11am-9pm	A family-owned restaurant serving authentic Mexican food for the past 14 years.	620.856.3733
Monarch Pharmacy & Soda Fountain	1601 Military Ave.	Baxter Springs	Thu-Fri 9am-6pm, Sat 9am-12pm	Find homemade ice cream, vintage sodas, other treats like Brown Cow, Egg Cream and Green River at this old-timey soda fountain.	620.856.3030
Oriental Garden	1910 Military Ave.	Baxter Springs	Thu-Sat 11am-8:30pm	All you can eat buffet plus soft-serve ice cream.	620.856.3003

RESTAURANT GUIDE



CHEROKEE COUNTY CHEROKEE ... CONTINUED

RESTAURANT	ADDRESS	CITY	HOURS	HIGHLIGHTS	PHONE
Red Ball Bar & Grill	539 W 5th St.	Baxter Springs	Thu-Sat 11am-9pm	Unique decor in a 1930s grocery store. Known for their tasty hamburgers and fresh-cut fries.	620.856.2020
Rice House & Chinese Restaurant	2932 Military Ave.	Baxter Springs	Thu-Sun 11am-9:30pm	Healthy, fresh, and natural dishes to satisfy the modern customer's tastes and needs.	620.856.2828
Van's Steak House	2447 Military Ave.	Baxter Springs	Thu-Sat 10:30am-9pm, Sun 11am-2pm	Van's is known for their "lip-smackin' good food." Homemade pie and friendly service, too!	620.856.5506
Weston's Route 66 Cafe	1737 Military Ave.	Baxter Springs	Thu 6am-7pm, Fri-Sat 6am-2pm	Hearty breakfasts served all day. One customer refers to Weston's as a "nice slice of Americana." Speaking of slice, did we mention they have pie?	620.856.4414
Brea's Bakery Nook	111 N. Kansas Ave.	Columbus	Thu-Fri 7am-2pm	Fresh ground coffee, espresso drinks and baked goods including homemade cinnamon rolls, scones, and bagels.	620.210.4475
Brush Creek Golf & Grill	1260 SE Hwy 160	Columbus	Thu 11am-9pm, Fri-Sat 11am-10pm, Sun 11am-2pm	Sandwiches, chicken, seafood, pasta, steaks, chops, salad and golf!	620.674.3383
Los Lunas Mexican Restaurant	114 S. Kansas Ave.	Columbus	Thu-Sat 11am-9:30pm, Sun 11am-8:30pm	Authentic Mexican bringing traditional Mexican favorites from south of the border to southeast Kansas.	620.429.8080
Matt's Sno Shack	908 E. Sycamore	Columbus	Thu-Fri 3-9pm, Sat-Sun 1-9pm	Dippin' Dots, Dole Whip, hand-dipped ice cream, shakes, floats, malts and and endless number of Tropical Sno concoctions!	620.762.2171
Norma's Diner	126 S Kansas Ave.	Columbus	Thu-Sun 7am-3pm	Locals rave about the omelets, French toast, skillet breakfasts and friendly service.	620.429.4965
Smittle House: Bed and Breakfast and Fine Dining	426 S Kansas Ave.	Columbus	See Description	Only one dinner party booked a night in a 1907 Victorian home. Bananas Foster served table side. Call 620.429.2420 at least 48 hours in advance.	620.429.2420
Buddy's Frozen Treats	420 E. 7th St.	Galena	Fri-Sat 3-8pm	If you're hankering for an ice cream treat, stop here for hand-dipped ice cream, sundaes, shakes, and fountain drinks.	
Gravy's Place	316 S. Main St.	Galena	Thu 3pm-12am; Fri-Sat 3pm-1:30am	Local hangout with cold beer, pool tables, and friendly service. After a long day of exploring, start your evening here with the locals.	417.529.0642
J-Birds	815 W. 7th St.	Galena	Thu-Sat 5:30am-9pm, Sun 3-9pm	Start off with donuts and coffee in the morning and come back later for a cool shaved ice or ice cream treat.	417.499.3800
Main Street Deli	419 S. Main St.	Galena	Thu-Sat 10:30am-2:30pm	Salads, sandwiches (try the Sinkhole or 49er), burgers, soups, pizza, daily specials and desserts. Salad bar available. Free fresh-baked cookie with your order!	620.783.5902
Mi Torito Mexican Restaurant	418 S. Main St.	Galena	Thu-Sun 11am-9pm	Huge menu, margaritas, imported beer and cocktails. A local favorite!	620.783.2883
Red Onion Cafe/Espressoria	1619 K66 Hwy	Galena	Thu-Fri 7am-8pm, Sat 7am-2pm, Sun 11am-2pm	Try the Turkey Bacon Ranch Melt and homemade Chicken Salad Sandwich or David's Fried Chicken salad. Mother's Day Buffet offered on Sunday during the BKRT.	620.783.1748
Streetcar Station Coffee Shop	515 S. Main St.	Galena	Thu-Fri 6am-2pm, Sat 6am-12pm	Gourmet coffee, latte, cappuccino, smoothies, hot chocolate, Italian Soda, baked goods, biscuits and gravy, eggs, daily lunch specials.	620.783.5554
Sweet Creek Diner & Bakery	300 W. 7th St.	Galena	Thu-Sat 6:30am-2pm	Cast-iron skillet breakfasts, chicken fried steak dinners and tempting treats galore.	417.385.5008
Angelo's Deli	9057 SW U.S. 160	Hallowell	Thu-Sat 7am-6pm, Sun 10am-5pm	You can get groceries, gas, and bait but it may be the unique sauce on white-bread sandwiches that keeps folks coming back to this charming hole-in-the-wall. Daily lunch specials are also served.	620.597.2525
Scammon Express & Deli	7031 KS-7	Scammon	Thu-Sat 6am-9pm, Sun 7am-9pm	Made-from-scratch and quick items for breakfast, lunch and dinner. Takeout available.	620.479.2451



RESTAURANT GUIDE

CRAWFORD COUNTY

RESTAURANT	ADDRESS	CITY	HOURS	HIGHLIGHTS	PHONE
La Mama Bere Mexican Restaurant	102 E. South St.	Arma	Thu-Sat 11am-8pm	Mexican food.	620.347.4595
Idle-A-While Bar	201 S. Vine	Cherokee	Thu 11:30am-10pm, Fri-Sat 11:30am-11pm	Since the 1890s when the building was constructed as a speak-easy customers have been coming here. Today you can enjoy a cold beer and try one of their custom built burgers and sandwiches, mountain oysters, steaks, chicken and ribs.	620.457.8778
Magnolia Place	111 W. Magnolia St.	Cherokee	Mon-Sat 7am-2pm; 4-8pm, Sun 7am-2pm.	Fajita quesadillas, street tacos, beef enchiladas, pupusas, chimichangas and the All American Burger are just a few of the menu items that customers rave about.	620.719.0609
The Cake Shed	111 W. Magnolia St.	Cherokee	Thu 9am-5pm, Fri 9am-5:30pm, Sat 9am-2pm	Known for cakes, decorated sugar cookies, and hand pies. BKRT visitors are invited to stop by for a free Kansas themed chocolate chip cookie and 10% off items from our display case. Located in the country! From U.S. 400 and Hwy 7 intersection in Cherokee, go 2 miles west on U.S. 400, turn north on S.130th for 2 1/2 miles.	620.238.1540
Barto's Idle Hour Steak House & Lounge	1048 S. 130th St.	Cherokee	Thu-Sat 4-9pm	Chicken isn't in it's name but it's on the plates plus hand-cut steaks (purchased from Pallucca's), shrimp—and dancing! All kinds of music, including polka, Friday and Saturday nights starting at 8pm in the lounge.	620.232.9834
Farm House Cafe	201 S. Santa Fe	Frontenac	Thu-Sat 6am-9pm, Sun 6am-3pm.	Huge menu featuring home-style, fresh cooked food. Breakfast served anytime.	620.308.5394
Pallucca's Italian Market & Deli	4060 Parkview Dr.	Frontenac	Thu-Fri 11:30am-1pm	Fresh spaghetti sauce, meatballs, homemade Italian sausage, fresh-cut meats, Frontenac bakery bread and great selections of grated cheese, olive oil, and dry noodles. Attilio Pallucca started his store in 1909 as an Italian-American cooperative. New owners Ethan and Alyssa Edwards took over in 2013 and continue the market's century-old traditions and now serve lunch specials from 11:30am-1pm on weekdays.	620.231.7700
Pickled Pete's Bar & Grill	207 E. McKay St.	Frontenac	Thu 9am-7:30pm, Fri-Sat 9am-10pm	Neighborhood bar and grill, featuring old-fashioned hamburgers and award-winning chili.	620.231.3391
Raider Express Convenience Store & Sinclair Dino	303 E. McKay St.	Frontenac	Thu-Sat 6am-9pm, Sun-7am-9pm	Convenience store, deli and Sinclair Oil gas station with the infamous Dino mascot. Try their famous Philly Steak sandwiches and homemade pizza, using hamburger from the local grocery store and local bakery dough for the crust.	620.249.1168
Shooters Neighborhood Grill & Bar	325 E. McKay St.	Frontenac	Thu 11am-12am, Fri-Sat 11am-2am	A local grill and bar specializing in great food and drinks in a comfortable, family friendly atmosphere.	620.308.5983
Bender on 7	311 E. McKay St.	Frontenac	Thu 5-10pm, Fri-Sat 5pm-1am	Community, heritage, fun and beer. We are family friendly until 9pm.	620.724.4860
C4 Coffeehouse & Country Store	820 S. Summit	Girard	Thu-Fri 7am-5pm, Sat 8am-2pm	Ranch-themed coffee shop with saddle bar stools. Shop the country store for Myra Bags, Milk Bottle Co. Candles, Wind & Willow Dips, The Naked Bee Cosmetics and more.	620.724.6100
Chicken Annie's of Girard	102 S. Ozark	Girard	Thu-Sat 4-8:30pm, Sun 11am-8pm	The chicken legacy spread to Girard thanks to the original Chicken Annie's descendants, who opened this restaurant in 1971.	620.724.4090
Eastside Cafe	498 E. K-47	Girard	Thu-Sat 6am-2pm, Sun 8am-2pm	Locals rave about the breakfasts that are served all day. Have lunch or a cup of coffee and a piece of pie to fuel you up for more exploring in the afternoon.	620.724.4232
Hiway Inn	120 S. Ozark	Girard	Thu-Fri 6am-1pm, Sat-Sun 6-11am	Serving Girard for over 30 years, customers appreciate the low prices and hearty breakfasts served here.	620.674.3383
Lotus Express	126 E. Forest Ave	Girard	Thu-Sat 11am-8:30pm	Express style Asian takeout.	

RESTAURANT GUIDE



CRAWFORD COUNTY ... CONTINUED

RESTAURANT	ADDRESS	CITY	HOURS	HIGHLIGHTS	PHONE
Medina's Mexican Restaurant	302 W. St. John St.	Girard	Thu-Sat 11am-9pm	If you have a hankering for Mexican food while you're visiting Galena, the staff will be glad to welcome you.	620.724.6364
Opie's Pizza - Girard	203 E. St. John St.	Girard	Thu-Sat 10:30am-9pm, Sun 10:30am-8pm	Opie's Pizza chain had its beginnings in Pittsburg starting in 1995.	620.429.4965
The Pink Pickle	304 W. St. John St.	Girard	Thu 11am-10pm, Fri 3-10pm	The food is tasty and the beer is cold. Known for their juicy burgers and curly cue fries.	620.724.4600
McCune Farm to Market	604 Hickory	McCune	Thu-Sat 7am-8pm, Sun 7am-7pm (store); 7am-2pm (cafe).	Home cooking with the pride of grandma's house. Try the hand cut ribeye steak and eggs, homemade biscuits and gravy or the local favorite...the Birdy Burger. Lots of locally-raised meats, produce, farm eggs and more.	620.632.5198
Gebhardt's Chicken Dinners	124 N. 260th St.	Mulberry	Fri-Sat 4-9pm, Sun 11am-7:30pm	It started as a honky tonk, but in 1946 Ted and Maycle Gebhardt turned their farm home into a restaurant, cooking fried chicken dinners.	620.764.3451
505	505 N. Broadway St.	Pittsburg	Thu-Sat 5pm-2am	Home of the \$2 double wells happy hour.	620.235.0505
5th Street Bar & Grill	111 W. Fifth	Pittsburg	Thu-Sun 11am-11pm	Known for their sliders, wings, a variety of burgers and daily specials. Ask for the 1106er, a greasy burger homage to a former local drive-in.	620.232.2446
Bamboo	808 N. Broadway St.	Pittsburg	Thu-Sat 11am-9pm	Dine in, order online and take out Chinese food.	620.231.4226
Bob's Grill	1014 N. Broadway St.	Pittsburg	Thu-Fri 5am-1:30pm, Sat 5am-1pm	This is a working man and woman's throwback 1964 diner. Breakfast and lunch are busy times, but Bob's is worth the wait.	620.232.9738
Brick + Mortar Social House	401 N. Broadway St.	Pittsburg	Thu 11am-9pm, Fri-Sat 11am-10pm	A classic neighborhood bar in a chic, luxurious environment serves a mouth-watering menu of modern American fare.	417.793.5027
Bubba's Three Eleven Club	313 E. 7th St.	Pittsburg	Thu 3-11pm, Fri-Sat 3pm-2am	Local bar and hangout.	620.232.5622
Celebrations by Lori	1015 N. Broadway St.	Pittsburg	Thu-Fri 10am-6pm, Sat 10am-2pm	Family-owned bakery in the heart of downtown Pittsburg. Cookies, cupcakes, brownies, cakes, cake poppers and more.	620.231.5700
Chatters	2401 S. Rouse St.	Pittsburg	Thu-Sat 11am-10:30pm	Sushi, burgers and family style food.	620.232.7277
Chicken Annie's Original	1143 E. 600th Ave.	Pittsburg	Thu-Sat 4-8pm, Sun 11am-8pm.	When Annie's husband, coal miner Charley Pichler, suffered a disabling accident in Yale Mine No. 13 in 1933. To support their family in 1934 Annie started selling fried chicken with side dishes out of her home. It is owned today by Annie's grandchildren.	620.231.9460
Chicken Mary's	1133 E. 600th Ave.	Pittsburg	Thu-Sat 4-8pm, Sun 11am-8pm	They began serving chicken dinners in their home, moved into an old mining camp pool hall in 1945 and have operated in their current location since 1966. The Zerngast family's third generation continues to compete with neighboring Chicken Annie's for the best and most mouth-watering chicken dinners.	620.231.9510
Dirty Mule Restaurant/Bar & Event Center	134 S. US 69	Pittsburg	Thu-Sat 5pm-2am	Dance floor, dance music Friday nights & live country/rock/jazz music Saturday nights. Restaurant features fusion of Korean/American Smoked Meats.	620.404.0012
Drop the H Brewing Company	107 E. Rose St.	Pittsburg	Thu 4-9pm, Fri-Sat 11am-10pm, Sun 11am-8pm	Named for Pittsburgh, Pennsylvania, Pittsburg, Kansas 'dropped the H' in the late 1800s. Now, 120 years later, Drop the H Brewing Company arrived on the scene with a mission—craft beer, craft pizza, craft experience!	620.404.4019
El Caballo De Oro	111 N. Pine St.	Pittsburg	Thu 11am-9:30pm, Fri-Sat 11am-10pm, Sun 11am-8:30pm	Authentic Mexican flavors and a huge menu with lots of choices.	620.231.1881
Guadalajara Mexican Grill	1620 S. Broadway St.	Pittsburg	Thu, Sun 11am-9pm, Fri-Sat 11am-10pm	A variety of Mexican steak, fajitas, enchiladas, and quesadillas.	620.404.5040

Southeast

ADVENTURE

is waiting just down the road!



Discover a
DIFFERENT
KANSAS

SOUTHEAST KANSAS



www.discoversestkansas.org





RESTAURANT GUIDE

CRAWFORD COUNTY ... CONTINUED

RESTAURANT	ADDRESS	CITY	HOURS	HIGHLIGHTS	PHONE
Happy Family Pho and Restaurant	901 E. 4th St.	Pittsburg	Thu-Sat 11am-9pm	American-Chinese, authentic Chinese cuisines and Vietnamese Pho.	620.404.5208
Harry's Cafe	412 N. Broadway St.	Pittsburg	Thu-Sun 6am-2pm	Known in the area for offering the best breakfast and lunch meals and some say, the best pie in southeast Kansas.	620.232.2125
Jim's Steakhouse & Lounge	1912 N. Broadway St.	Pittsburg	Thu 3:30-8:30pm, Fri-Sat 3:30-9:30pm	A classic Pittsburg establishment serving steak and their popular sirloin tips.	620.404.4053
Jimmy B's Saloon	202 N. Locust St.	Pittsburg	Thu-Sat 1pm-2am	A saloon and beer garden with occasional live music in a 1904 building. Includes hand carved stone figures of prominent Kansas legends.	
Jolly Fox Brewery	301 S. Broadway St.	Pittsburg	Thu-Sat 11am-9pm	In-house brewed beers, signature cocktails and a full food menu. Outdoor seating is available with access to cornhole and gas firepit. BBQ smoked in house! Offering 15 minute tours of the brewery when time allows.	620.670.5999
Lotus Express	412 S Broadway St.	Pittsburg	Thu-Sat 11am-8pm	Dine in or take out Chinese food.	620.232.2822
Mandy's Place	206 S. Broadway St.	Pittsburg	Call for hours	Cajun comfort food. Fried pickles, jambalaya, shrimp po boy, crawfish.	620.249.4599
McCarthy's Pub & Grub	221 E. 3rd St.	Pittsburg	Thu-Sat 4pm-2am	Local Irish pub.	620.231.1344
Napoli's Italian Restaurant	1301 N. Broadway St.	Pittsburg	Thu 11am-9pm, Fri-Sat 11am-10pm	Authentic home-made Italian cuisine served fresh and full of flavor.	620.232.9494
Oriental Star	2711 N. Broadway St.	Pittsburg	Thu-Sun 11am-9m	Chinese cuisine, sushi and hibachi.	620.330.9928
Otto's	711 N. Broadway St.	Pittsburg	Thu-Sat 7am-2pm, Sun 7-11am	Retro diner looks just as it did when it opened in 1945 as an addition to Hotel Stilwell. It still has the 10-stool counter and the mauve and gray Formica countertop. Otto's is a breakfast oasis.	620.240.4112
Pichler's Chicken Annie's	1271 S. 220th	Pittsburg	Thu-Sat 4-8:30pm, Sun 11am-8pm	Chicken Mary's granddaughter Donna married Chicken Annie's grandson Anthony, and together they created a new dimension to the area's chicken tradition by opening Pichler's Chicken Annie's!	620.232.9260
Root Coffeehouse & Creperie	402 N. Broadway St.	Pittsburg	Thu-Sat 7am-8pm, Sun 7am-6pm	Coffee shop with a laid back vibe in one of Pittsburg's most historic buildings. Coffee using locally-roasted beans, sustainably-sourced organic teas, smoothies, protein shakes, specialty crepes made to order and a variety of bagels and pastries.	620.687.3761
Sakera Hibachi Grill & Sushi Express	1618 S. Broadway St.	Pittsburg	Thu-Sat 11am-9pm	Japanese, hibachi and sushi restaurant.	620.704.9185
Salvadoreño #1	209 N. Broadway St.	Pittsburg	Thu-Sat 12-7pm	Authentic Salvadoran cuisine includes traditional pupusas, tamales, panes con pollo and chile rellenos.	620.404.4011
Signet Coffee Roasters	109 N. Broadway St.	Pittsburg	Thu-Sat 7am-4pm	Choose from a selection of single-origin and blended beans, or enjoy a coffee from the coffee bar. Add homemade caramel, mocha mix, and whipping cream for extra deliciousness.	620.308.5326
Six-O-One Donut Shop	601 S. Broadway St.	Pittsburg	Thu-Sun 4:30am-1pm	Who doesn't like fresh, hot donuts? Get here early for the best selection.	620.232.1601
Smokey Racks BBQ	1002 S. Broadway St.	Pittsburg	Thu-Sat 11am-8pm	Pulled pork, brisket, hot links, pulled chicken, Italian sausage, pork loin and turkey. Known for their loaded spuds.	620.232.7675
Sugar Rush Sweet Treats	709 N. Broadway St.	Pittsburg	Fri 2-8pm, Sat 1-9pm, Sun 2-7pm	Located in the historic Hotel Stilwell, relive your youth at this old-fashioned soda/malt shop with ice cream sundaes, Italian sodas, and candy you can't find anywhere else.	620.404.5002
The Break Pool Hall & Lounge	607 N. Broadway St.	Pittsburg	Thu-Fri 9am-5pm	Local pool hall.	
The Mall Deli	202 E. Centennial (Meadowbrook Mall)	Pittsburg	Thu-Sat 11am-6pm, Sun 11am-4pm	Jim and Diane Martino have found the right recipe for creamy Italian dressing, which they sell by the bottle, French dips, subs, and more. Folks line up for the experience every day at noon.	620.231.7590

RESTAURANT GUIDE

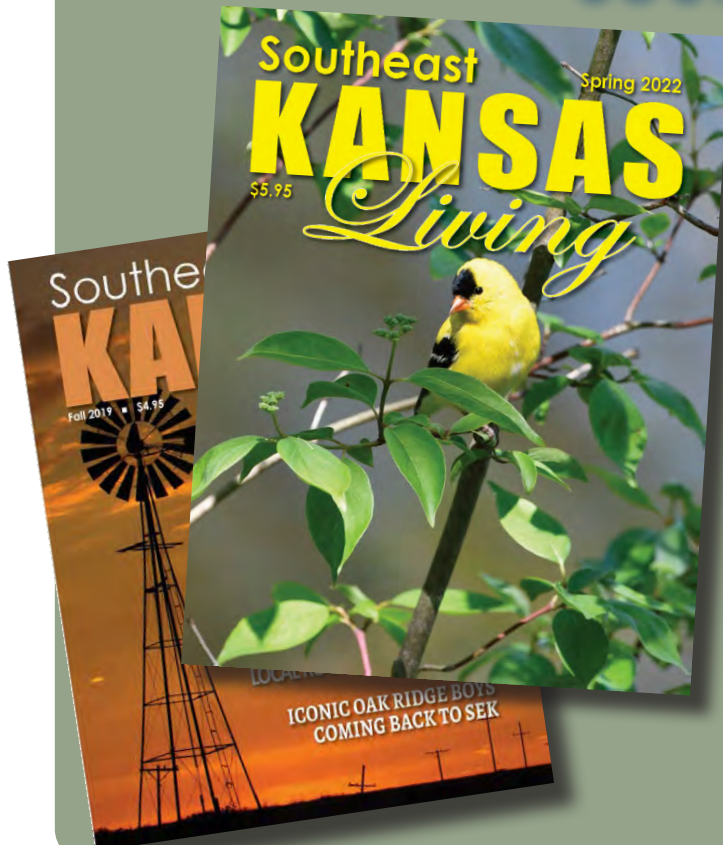


CRAWFORD COUNTY ... CONTINUED

RESTAURANT	ADDRESS	CITY	HOURS	HIGHLIGHTS	PHONE
The Pitt	516 N. Broadway St.	Pittsburg	Thu-Sun 11am-12am	Pittsburg's place to eat, drink, and have fun.	620.308.6888
TJ Lelands	108 W. 6th St.	Pittsburg	Thu 4pm-2am, Fri-Sat 6pm-2am	The old Leland Hotel repurposed as a friendly, laid back pub. Live music most weekends.	620.404.8065
TOAST	401 N. Broadway, Suite D	Pittsburg	Thu-Fri 11am-9pm, Sat 8am-9pm	A funky little restaurant with big flavor with options using seasonal, local ingredients paired with locally baked, artisan bread. Known for the "TOAST" Melt and Avocado Smoked Salmon Toast, Saturday Brunch and Big A\$\$ Cinnamon Rolls. FREE GELATO with meal purchase for all BKRT Visitors.	620.249.8982
Two Brothers Mining Company	1275 S. US 69	Pittsburg	Thu-Sun 11am-9pm	American fare served at the Kansas Crossing Casino.	620.232.7277
Typhoon Thai Cuisine	1014 S. Broadway St.	Pittsburg	Thu-Sat 11am-8:30pm	The lovely Asian interior complements the delicious, beautiful Thai dishes like pineapple curry, pad Thai, and tamarind chicken.	620.231.9460
His & Hers Bar & Grill	203 S. Main St.	Pittsburg	Thu 11am-8:30pm, Fri-Sat 11am-9:30pm	Local tavern.	620.231.9510
Aunt Julie's Kitchen-Girard, Columbus & Pittsburg	See Description	Multi-cities	See Description	Find the food truck serving home-style glazed sourdough doughnuts. Check their Facebook page to find where they'll be each day. @AuntJuliesKitchen	620.778.9928

Southeast Kansas Living

magazine



20 YEARS
of celebrating
everything
special about SEK!

Four quarterly issues and a *BONUS*
SEK Adventures & Day Trips Guide - \$25/year

SEK LIVING
P.O. Box 1126
Independence, KS 67301

sekliving.com

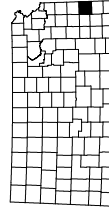
- HIGHWAY MARKERS**
- Interstate Numbered Highway
 - State Numbered Highway
 - U.S. Numbered Highway
 - State Numbered Highway
 - Interstate
 - Controlled Access
 - US Route - Divided
 - US Route - Undivided
 - State Route - Divided
 - State Route - Undivided
 - RS Route - Paved
 - RS Route - Unpaved
 - Minor Road - Paved
 - Minor Road - Gravel
 - Minor Road - Soil
 - Road System Designation
 - Road
 - 1st RD County Road System
 - End of Designated System
- BOUNDARIES**
- County Boundary
 - State Boundary
 - Military Fort Boundary
 - Indian Reservation
 - Section Line
 - Park or Wildlife Area
 - Incorporated City Limit
 - Urban Area
- CITIES OR TOWNS**
- State Capital
 - County Seat
 - Populated Place
 - Locate
- DRAINAGE**
- River or Major Drainage
 - Lake or Reservoir
- MAP SYMBOLS**
- Roundabout
 - Interchange
 - State System Bridge
 - Railroad



GENERAL HIGHWAY MAP
BOURBON COUNTY
KANSAS
PREPARED BY THE
KANSAS DEPARTMENT OF TRANSPORTATION
BUREAU OF TRANSPORTATION PLANNING
IN COOPERATION WITH THE
U.S. DEPARTMENT OF TRANSPORTATION
FEDERAL HIGHWAY ADMINISTRATION



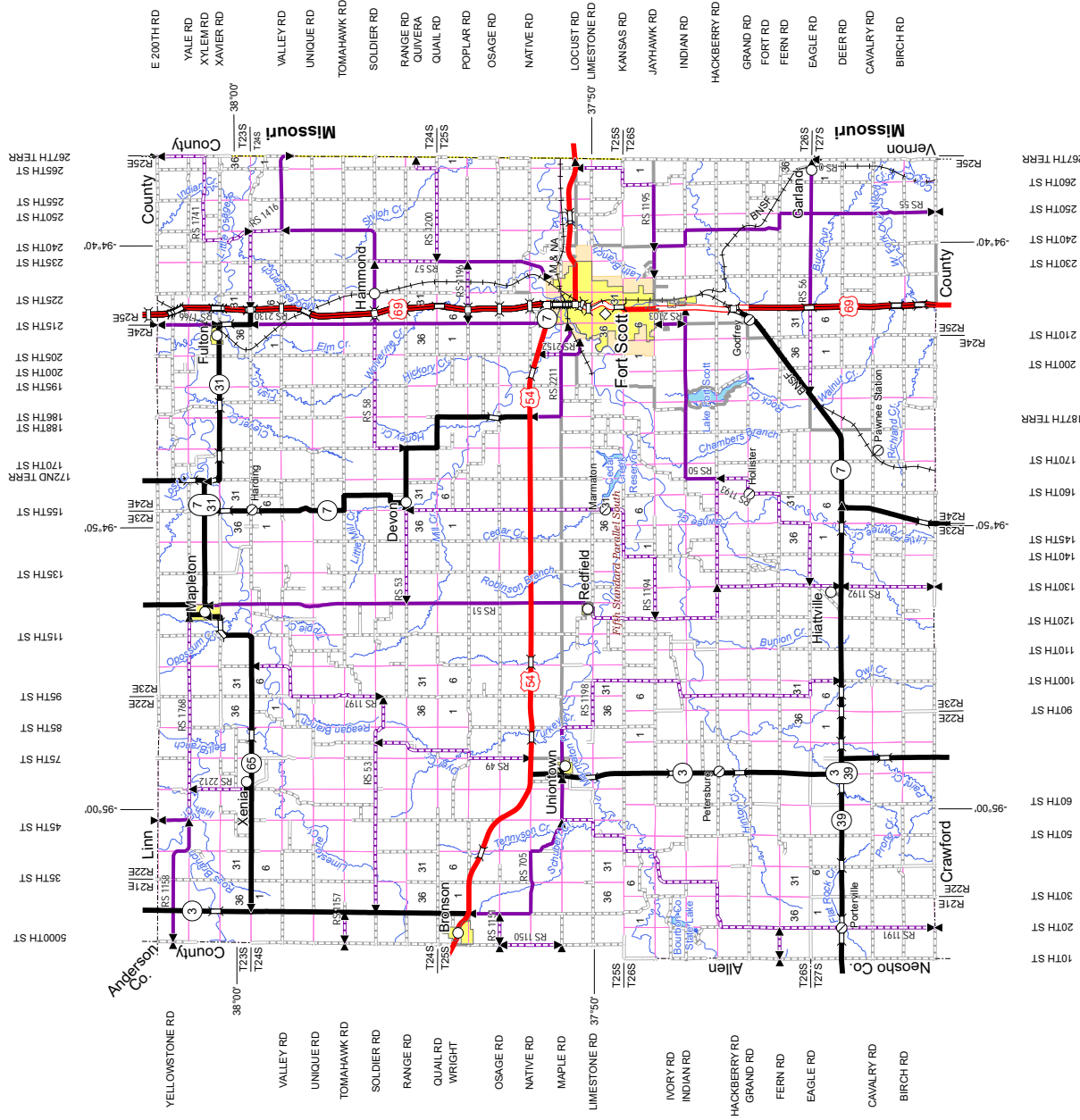
MAY 2021



Kansas Regional Coordinate System (KRCS)
KRCS 20 Pittsburg NAD 1983 2011 TM US Feet



KDOT makes no warranties, guarantees, or representations for the accuracy of this information and assumes no liability for errors or omissions.



HIGHWAY MARKERS

Interstate Numbered Highway
Kansas Turnpike Authority
U.S. Numbered Highway

HIGHWAY CLASSIFICATIONS

Interstate
Kansas Turnpike (KTA)
Controlled Access
US Route - Divided
US Route - Undivided
State Route - Divided
State Route - Undivided
Road Classifications
RS Route - Paved
RS Route - Unpaved
Minor Road - Paved
Minor Road - Gravel
Minor Road - Soil
Road System Designation
RS Rural Secondary System
RST RD county Road System
End of Designated System

BOUNDARIES

County Boundary
State Boundary
Military Fort Boundary
Indian Reservation
Section Line
Park or Wildlife Area
Incorporated City Limit
Urban Area

CITIES OR TOWNS

State Capital
County Seat
Populated Place
Locale

DRAINAGE

River or Major Drainage
Lake or Reservoir

MAP SYMBOLS

Roundabout
Interchange
State System Bridge
Railroad

GENERAL HIGHWAY MAP

CHEROKEE COUNTY KANSAS

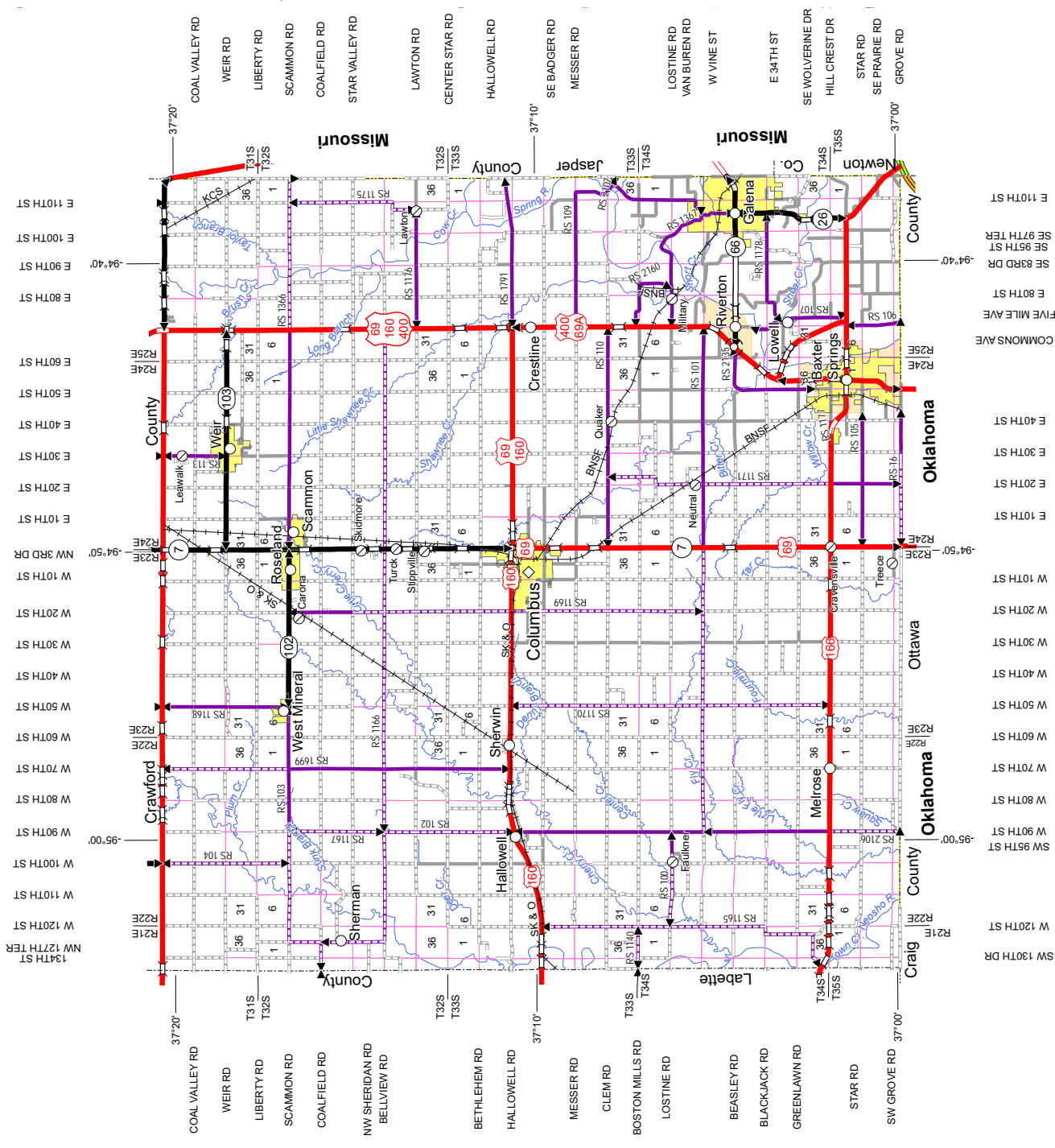
PREPARED BY THE
KANSAS DEPARTMENT OF TRANSPORTATION
BUREAU OF TRANSPORTATION PLANNING
IN COOPERATION WITH THE
U.S. DEPARTMENT OF TRANSPORTATION
FEDERAL HIGHWAY ADMINISTRATION

0 1 2 3 4
Miles
MAY 2021

Kansas Regional Coordinate System (KRCS)
KRCS 20 Pittsburg NAD 1983 2011 TM US Feet

Kansas Department of Transportation

KDOT makes no warranties, guarantees, or representations for the accuracy of this information and assumes no liability for errors or omissions.



HIGHWAY MARKERS
Interstate Numbered Highway
Kansas Turnpike Authority
U.S. Numbered Highway
State Numbered Highway

BOUNDARIES
County Boundary
State Boundary
Military Fort Boundary
Indian Reservation
Section Line
Park or Wildlife Area
Incorporated City Limit
Urban Area

HIGHWAY CLASSIFICATIONS
Interstate
Controlled Access
Kansas Turnpike (KTA)
US Route - Divided
US Route - Undivided
State Route - Divided
State Route - Undivided
RS Route - Unimproved
RS Route - Paved
Minor Road - Paved
Minor Road - Gravel
Minor Road - Soil
Rural Secondary System
1ST RD County Road System
End of Designated System

CITIES OR TOWNS
State Capitol
County Seat
Populated Place
Locale

ROAD CLASSIFICATIONS
RS Route - Unimproved
RS Route - Paved
Minor Road - Paved
Minor Road - Gravel
Minor Road - Soil
Rural Secondary System
1ST RD County Road System
End of Designated System

ROAD SYSTEM DESIGNATION
Rural Secondary System
1ST RD County Road System
End of Designated System

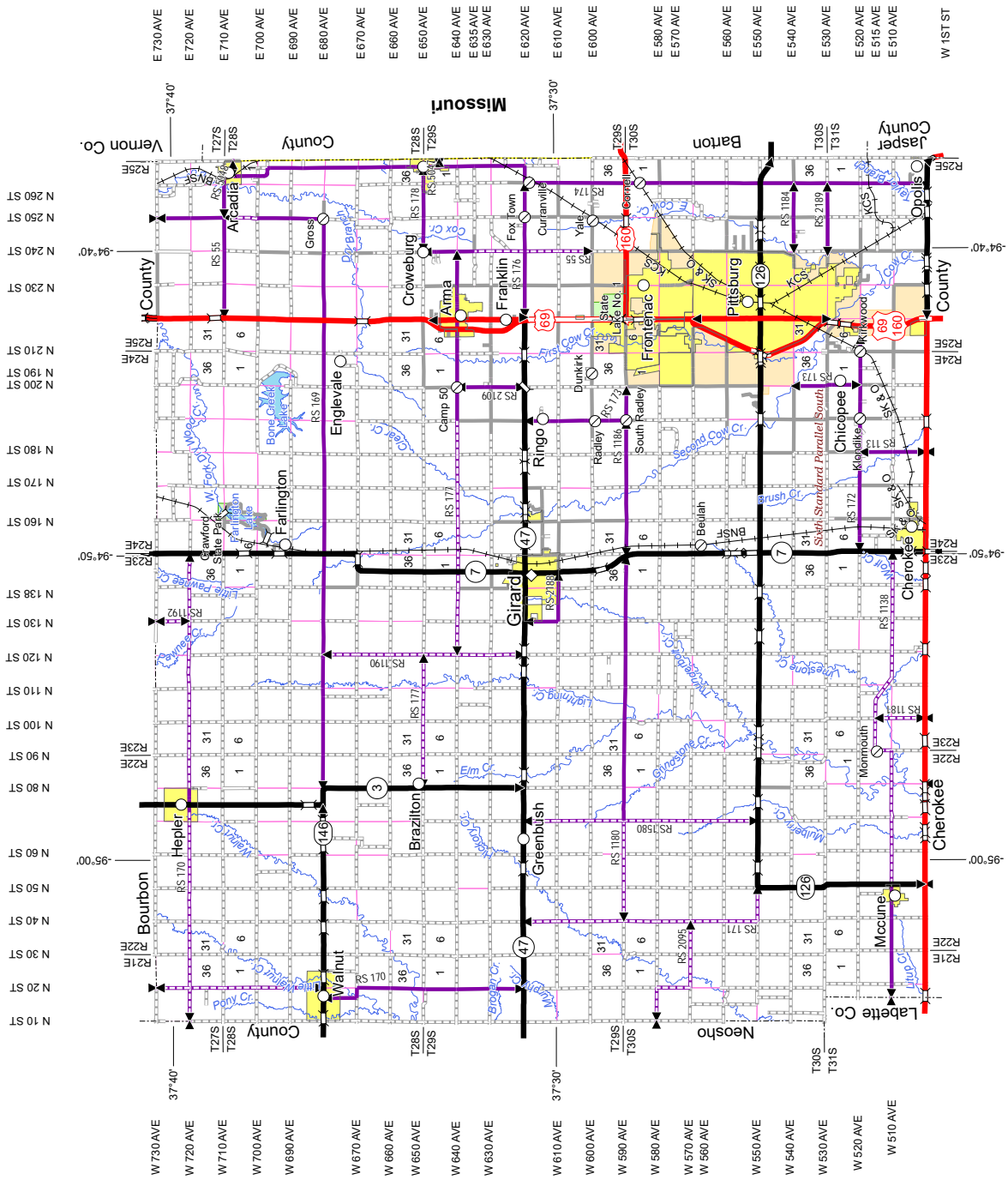
MAP SYMBOLS
Interchange
Roundabout
State System Bridge
Railroad
River or Major Drainage
Lake or Reservoir
End of Designated System

GENERAL HIGHWAY MAP
CRAWFORD COUNTY
KANSAS
PREPARED BY THE
KANSAS
DEPARTMENT OF TRANSPORTATION
BUREAU OF TRANSPORTATION PLANNING
IN COOPERATION WITH THE
U.S. DEPARTMENT OF TRANSPORTATION
FEDERAL HIGHWAY ADMINISTRATION

0 1 2 3 4
Miles
MAY 2021

Kansas Regional Coordinate System (KRCS)
KRCS 20 Pittsburg NAD 1983 2011 TM US Feet

KDOT makes no warranties, guarantees, or representations for the accuracy of this information and assumes no liability for errors or omissions.





SHOP STOPS

BOURBON COUNTY

CITY	DAY(S)	TIME	BUSINESS	DESCRIPTION	ADDRESS	PHONE
Bronson	Thu-Sat	Thu 8am-5pm, Fri 8am-6pm, Sat 9am-12pm	Bronson Locker Butcher Shop	A wide range of retail meats, and miscellaneous products including beef sticks, jerky, summer sausage, ham chops, smoked bacon, etc. BKRT visitors will receive a 5% discount on retail purchases.	504 Clay St.	620.939.4575
Bronson	Thu-Sat	Thu 8am-5pm, Fri 8am-6pm, Sat 9am-12pm	THRAM's Fine Collectibles and Antiques	A thriving antique and furniture business owned by five women. BKRT visitors will receive a 5% discount on purchases. The gals will have some nice refreshments ready for you, too!	504 Clay St.	620.363.1159
Fort Scott	Thu-Sun	Thu-Fri 8am-8pm, Sat 8am-4pm, Sun 8am-8pm	1553 Plants & Produce	From US 69, take US 54 west 1.5 miles, turn right (north) on 205th for 1.75 miles. Receive a 10% discount off total purchase.	1553 205th St.	785.422.5770
Fort Scott	Thu-Sun	Thu-Sat 9am-7pm, Sun 9am-5pm	Angie Dawn's Boutique	Midwest fashion for women and plus sizes. Sample Kansas blended tea and other Kansas products. Register to win a \$50 gift card.	108 S. Scott Ave., Ste B	620.224.2693
Fort Scott	Thu-Sat	10am-6pm	Better in Bourbon	Visit this stylish boutique featuring women's and tween sized clothing and accessories for everyday and holiday. BKRT visitors receive a gift with purchase.	13 N. Main St.	913.488.8176
Fort Scott	Thu-Sun	Thu-Sat 9am-7pm, Sun 9am-5pm	Bids & Dibs Resale Boutique	Upscale resale boutique. Register to win a new Kate Spade purse valued at \$295. Mailed to the winner via USPS on Monday, May 9th.	108 S. Scott Ave., Ste C	620.224.2437
Fort Scott	Thu-Sat	Thu-Fri 10am-5:30pm, Sat 10am-1pm	Fort Scott Gun & Pawn	Free coffee, soda or water and enter to win firearm valued at \$699. Receive 5% off anything in store, excluding firearms.	1402 E. Wall St.	620.223.0583
Fort Scott	Thu-Sat	10am-5pm	Hedgehog.INK!	A great book store specializing in gently used, limited new, books and local Bourbon County products. BKRT visitors, buy 2 books, get 1 free.	16 S. Main St.	620.670.2752
Fort Scott	Thu-Sat	9am-5pm	Ruddick's Furniture and Flooring	BKRT visitors receive an extra 5% off any purchase.	117 S. National	620.223.2510
Fort Scott	Thu-Sat	Thu-Sat 10am-6pm, Sun 1-5pm	Sunshine Boutique	Fashion boutique and gift shop. Spin the wheel at checkout to save or win! New soups on for sampling.	18 E. Wall St.	620.223.6007
Fort Scott	Thu-Sun	Thu-Sat 10am-5pm, Sun 11am-4pm	The Artificers	A gallery featuring fine artists and craftsmen. Resident artists and owners welcome you to the gallery and will have a gift for you made from Bourbon County clay.	8 N. National Ave.	913.574.7741
Fort Scott	Thu-Sun	11am-5:30pm	Treasure Hunt Flea Market	Browse their wide selection of unique, vintage, antique and primitive items. BKRT visitors receive 10% discount off their purchases.	6 S. Main St.	620.223.3522

CHEROKEE COUNTY

CITY	DAY(S)	TIME	BUSINESS	DESCRIPTION	ADDRESS	PHONE
Baxter Springs	Thu-Sat	Thu-Fri 9am-12pm; 1-4:30pm; Sat 9-11:30am	Modern Jewelry, Inc.	This long-time, family owned jewelry store is welcoming BKRT visitors with a free gemstone/mineral, indigenous to Kansas, just for stopping in!	1118 Military Ave.	620.856.3542
Baxter Springs	Thu-Sat	Thu-Fri 10am-5pm, Sat 10am-1pm	The Copper Lily	The Copper Lily offers beautiful floral arrangements plants and unique gifts for all occasions. BKRT visitors receive 10% off purchases!	201 E. 12th St.	620.856.2198



SHOP STOPS

CHEROKEE COUNTY ... CONTINUED

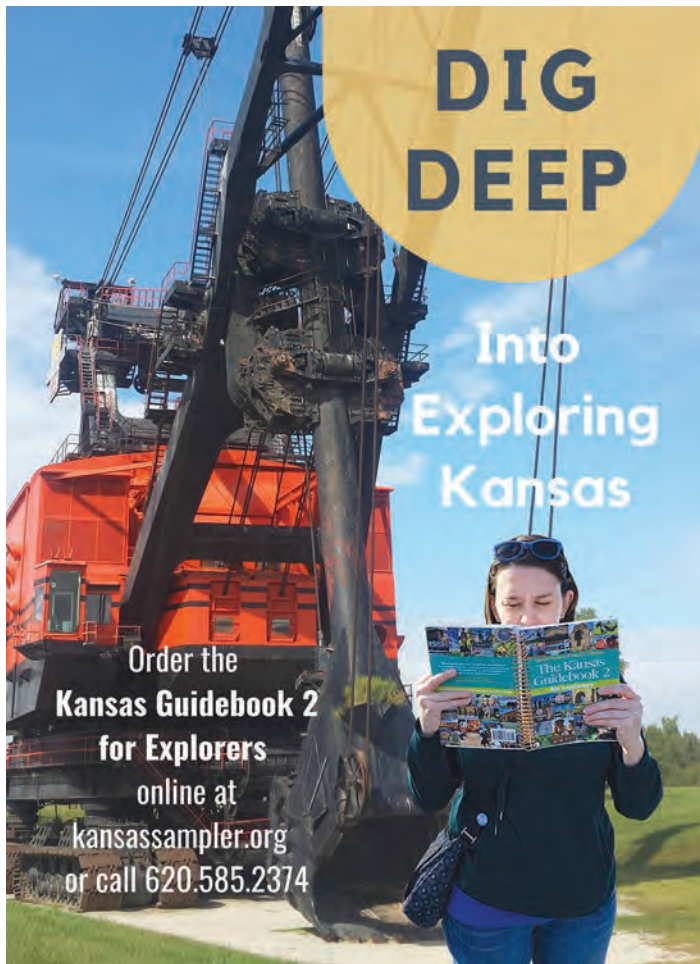
CITY	DAY(S)	TIME	BUSINESS	DESCRIPTION	ADDRESS	PHONE
Columbus	Thu-Sun	Thu-Fri 3-7pm, Sat 10am-5pm, Sun 1-4pm	Columbus Made and Mercantile	Columbus Made and Mercantile is a quaint shop filled with locally curated items ranging from clothing, candles, furniture and a variety of unique gift ideas! Register for a huge gift basket to be given away May 8th! No purchase necessary. Need not be present to win.	206 Northeast Ave.	620.762.2171
Galena	Thu-Sat	10am-6pm	Beautiful Chaos, LLC	If you have littles, you'll want to stop by this boutique for working moms. BKRT visitors will receive a Rt. 66 felt freshie (car air freshener) with \$20 or more purchase.	601 S. Main St.	417.483.9300
Galena	Thu-Sun	Thu-Fri 11am-7pm, Sat 10am-7pm, Sun 12-4pm	Erickson & Co. Mercantile	Shop locally at this specialized mercantile that features over 32 other small business products from the four-state area. Let the staff know you are a BKRT visitor and score a FREE Kansas product.	610 S. Main St.	918.210.2188
Galena	Thu-Sun	Thu-Fri 10am-5pm, Sat 9am-5pm, Sun 12-4pm	Foxall Farms Flea Market	A pleasant and enjoyable shopping experience in a spacious, well lit, clean and organized facility. A variety of items from modern, vintage and antique. Stop for free popcorn, taffy, candies, and bottled water. Located just off old Route 66 between Galena and Riverton.	8188 SE Hwy 66	417.529.2466
Galena	Thu-Fri	8am-5pm	Grant Deardorff State Farm	Free coffee and water, pictures with cardboard cutout of Jake from State Farm, free Tootsie Pops, viewing of historic building on Main Street and Route 66, and free coupons to local businesses if visitors leave a review.	606 S. Main St.	620.856.5179

CRAWFORD COUNTY

CITY	DAY(S)	TIME	BUSINESS	DESCRIPTION	ADDRESS	PHONE
Pittsburg	Thu-Sat	Thu-Fri 11am - 6pm, Sat 10am-4pm	Audacious Boutique	We are here to offer styles with comfort and character for the bold woman in you. BKRT visitors receive 10% off their purchase!	211 N. Broadway	620.308.6086
Pittsburg	Thu-Sat	Thu-Fri 10am-6pm, Sat 10am-4pm	Books & Burrow	Independent bookstore and gift shop with new books, teas, stationery, candles, games/puzzles, confections, and more. The owner, a proud member of the Peoria Tribe of Indians of Oklahoma, features Indigenous authors and stories. Receive 10% off purchase (some exclusions apply).	212 S. Broadway	620.238.5330
Pittsburg	Thu-Sun	Thu-Fri 10am-6pm, Sat 10am-4pm, Sun 12-3pm	Miners + Monroe	A unique mercantile with a focus on men's quality apparel, apothecary and lifestyle goods. BKRT visitors will receive a 15% discount.	214 S. Broadway	620.704.4949
Pittsburg	Thu-Sun	Thu-Fri 10am-5:30pm, Sat 10am-5pm, Sun 12:30-4:30pm	Paradise Mall Flea Market	This 10,000+ flea market is filled with antiques, collectibles, handmade furniture, brand new items and more. Enter a drawing for vintage advertising pieces.	105 S. Broadway	620.232.6956
Pittsburg	Thu-Sat	Thu-Fri 10am-5:30pm, Sat 10am-3pm	Simon Market	Locally sourced beef, chicken, pork, seafood and specialty meats made in house. Also find farm eggs and dairy products. BKRT visitors receive 10% discount on non-sale items. Don't forget to bring a cooler!	201 S. Broadway, Ste. E	620.687.0937



Look for the Big Kansas Road Trip page on Facebook or go to bigkansasroadtrip.com



DIG DEEP

Into Exploring Kansas

Order the Kansas Guidebook 2 for Explorers online at kansassampler.org or call 620.585.2374



KANSAS CROSSING CASINO + HOTEL

YOU'RE GONNA DIG IT!



1275 S HIGHWAY 69 // PITTSBURG, KANSAS // KANSASCROSSINGCASINO.COM   

Gambling Problem? **Getting Help is your Best Bet.** 800.522.4700 ksgamblinghelp.com

Must be 21+. All casino games owned and operated by the Kansas Lottery



ArtForms Gallery

local artists coop

Exceptional works by local area artists and artisans

620 N Broadway
Pittsburg, KS 66762
620.240.0165

www.artforms-gallery.com • info@artforms-gallery.com



Explore Jefferson Highway in KANSAS and Beyond!

Historic Information & Maps found at:
www.jeffersonhighway.org



June 1 - 4, 2022
JHA Annual Conference
Pittsburg, Kansas

 Follow Jefferson Highway on Facebook!



JEFFERSON HIGHWAY
From PINE to PALM
WINNIPEG TO NEW ORLEANS

SPECIAL EVENTS



BOURBON COUNTY

CITY	DAY(S)	TIME	EVENT	DESCRIPTION	ADDRESS	PHONE
Bronson	Thu-Fri	Thu 8am-5pm, Fri 8am-6pm	Bronson Locker Plant Tour	Learn how beef and hogs are processed. Tour lasts 30-45 minutes. Stop by anytime during retail hours. (The store is open Sat 9-12, but processing only happens on Thu-Fri.)	504 Clay St.	620.939.4575
Fort Scott	Thu-Sat	See Description	BKRT Dolly the Trolley	A great way to see the sites of the town and learn the history! Tours leave from the Visitor Center, 231 E. Wall St.; \$6 adults, \$4 children 12 & under; Thu-Fri 11am, 12pm, 1pm, 2pm, 3pm; Sat 10am, 11am, 12pm, 1pm, 2pm, 3pm; Sun 1pm and 2pm.	Visitor Center, 231 E. Wall St.	620.223.3566
Fort Scott	Sat	8am-Noon	Fort Scott Farmers Market	Shop for fresh, locally produced farm products. Located in front of the historic fort.	Skubitz Plaza, 100-198 Old Fort Blvd.	620.215.3889
Fort Scott	Thu-Sat	Thur-Fri 10am-5 pm, Sat 10am-4 pm.	Lowell Milken Center for Unsung Heroes	Tour the Hall of Unsung Heroes museum and attend talks at 10am, Thu-Sat: Cathy Werling, the author of our Unsung Heroes Children's Book Series; 1pm, Thu-Sat: Presentation given on "Life in a Jar: The Irena Sendler Project" by, Norm Conard and Megan Felt, two of its creators.	1 S. Main St.	620.223.1312
Fort Scott	Fri-Sat	8am-6pm	Pioneer Harvest Fiesta Swap Meet	Flea market, garage sale items, antique gas engines and parts, baked goods, homemade pies and lunch menu. Free admission to swap meet. Gates open at 8am.	Bourbon County Fairgrounds 2102 S. Huntington	620.224.7761
Fort Scott	Thu-Sun	9am-6pm	The Lavender Patch Farm	Walk the fields, talk to the owners and shop. Watch various lavender processing demonstrations throughout the day, including lavender distilling (hydrosol/essential oil).	2376 Locust Rd.	620.223.1364
Fort Scott	Fri-Sat	See website for hours	Town Wide Garage Sale	Pick up a listing/map at the Chamber of Commerce.	231 E. Wall St.	620.223.3566
Garland	Thu-Sat	Tours daily at 1, 2 and 3pm	Black Dogs Farm	Watch sheep shearing, fiber demonstration and tour a traditional farm. Buy free range eggs, lamb, artistic woolen garments and honey. No admission, donations appreciated.	351 230th St.	620.223.2702

CHEROKEE COUNTY

CITY	DAY(S)	TIME	EVENT	DESCRIPTION	ADDRESS	PHONE
Baxter Springs	Fri-Sat	Fri-6pm, Sat 9am-5pm	Cowtown Days	An annual event highlighting Baxter Springs' history as the first cowtown in Kansas. Activities include a craft fair, car show, BBQ Smoke Off, food trucks, Cowtown Idol, bull ridin', Kid's Corral, gun fights, live music, and more! Watch the Facebook page for more information. The event takes place at the Historic Johnston Public Library grounds.	210 W. 10th St.	620.674.2310
Columbus	Thu-Sun	12-6pm	Maple UnCommon Guest House & Gallery	Stop by the gallery to view the work of Justin Kidston, a painter who won last year's Joplin Art Festival.	120 E. Maple St.	620.762.3782

DO YOU KNOW WHERE THE BKRT HAS BEEN BEFORE?

2018 - Barber, Comanche and Kiowa counties
 2019 - Cheyenne, Sherman and Wallace counties
 2021 - Brown, Doniphan and Nemaha counties



SPECIAL EVENTS

CRAWFORD COUNTY

CITY	DAY(S)	TIME	EVENT	DESCRIPTION	ADDRESS	PHONE
Girard	Thu-Sat	10am-5pm	Painted Barrels	Want to do a fun activity and create a souvenir of your BKRT visit? You can pour your own candle featuring a Kansas scent or make a Kansas ornament. The candle pour costs \$15 for one or \$20 for two and requires pre-registration and pre-payment. Call 620.724.4000 to pre-register. Stop in anytime during store hours for the Kansas Ornament Make & Take. Cost is \$5 per ornament. Painted Barrels is a vendor boutique featuring gifts, decor, jewelry, apparel and many locally-made products. Lots of fun Kansas merchandise available for road trippers!	127 S. Summit	620.724.4000
Pittsburg	Fri-Sat	See Description	Cow Creek Cowboy Days	Relive the Civil War and Wild West era with skits, campfire poetry, mounted shooting, music, and more on the grounds at the Crawford County Historical Museum. Cowboy Campfire Poetry and Singing on Fri 6-8pm. Cowboy musicians, shop local vendors and artisans, dutch oven cooking, wagon rides and kids activities on Sat 9am-3pm. Wild West Show on Saturday at 10am and 2pm; Pony Express Show at Noon; Mr. Brown's Grocery Robbery at 1:30pm.	651 S. Hwy 69	620.231.1440



See you at the stump

Meet Marci Penner and WenDee Rowe of the Kansas Sampler Foundation and co-authors of the *Kansas Guidebook 2 for Explorers*. At The Stump, Marci will ask Kansas questions and the audience will answer. In the end, someone walks away with a prize. Kansas guidebooks and Explorer swag will be available at The Stump, too. Big thanks to the prize sponsors!

BRING A LAWN CHAIR

MAY 5, THURSDAY

2pm - Historic Block House
Old Fort Blvd. and W. Oak
Fort Scott (Bourbon Co.)

MAY 6, FRIDAY

10am - Courthouse grounds by the deer
111 E. Forest
Girard (Crawford Co.)

4pm - City Park
Charles and Spruce
Bronson (Bourbon Co.)

MAY 7, SATURDAY

10am - McCune Farm to Market
604 Hickory
McCune (Crawford Co.)

1pm - Schermerhorn Park
3501 S. Main (near Galena)
Galena (Cherokee Co.)

3pm - City Park
S. Kansas and E. Graves
Columbus (Cherokee Co.)

Gordon Parks

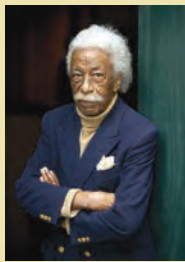
MUSEUM

LOCATED ON THE FORT SCOTT COMMUNITY COLLEGE CAMPUS

•Exhibits •Displays •Photos •Media Center

Photographer, filmmaker, musician and writer.
Born in Fort Scott in 1912 and died in 2006.
Buried in Fort Scott's Evergreen Cemetery.

2108 S. Horton, Fort Scott
1-620-223-2700, ext. 5850



Gordon Parks
THE GORDON PARKS MUSEUM
Fort Scott, Kansas



gordonparkscenter.org



Visit
COFFEYVILLE
Kansas



Scan for more
info!



www.visitcoffeyville.com | 620-251-2550



DISCOVER HISTORIC

DOWNTOWN

PITTSBURG, KANSAS

Memories of Pittsburg, Kansas are preserved in many of our charming downtown buildings. These iconic places of our past have shaped us into who we are. Follow our interactive walking tour to uncover the unique history of our city and be transported to the moments in time when our community was just beginning.



Visit our website or scan the QR code to open the interactive map:

www.pittks.org/downtown

SCAN ME!



BROADWAY PITTSBURG, KANSAS.

to the timeless

Welcome to SE Kansas, home of the Frontier Military and Route 66 historic byways. There is no better way to see the state than a road trip. Kansas has 12 byways, covering every corner of the state.

Each byway has their own unique personality and attractions. So, enjoy your time exploring SE Kansas and then make plans to travel all the byways in Kansas!

KANSAS
TO THE STARS

Visit TravelKS.com to order a free Byways guide.

#ToTheStarsKS


Angie Dawn's
 BOUTIQUE

We Carry
 a Line of
 Kansas Made
 Products!

www.angiedawns.com • 620-224-2693

In the beautiful Historic District of
 Downtown Fort Scott, Kansas

108 S. Scott Avenue • Suites B & C

5,000 sq. ft.
 of Sales Floor!




 Resale Boutique and Online Sales

www.bidsanddibs.com • 620-224-BIDS (2437)

www.KSROCKSPARK.COM

 **EXPLORE
 380 ACRES
 OF CHALLENGING
 OFF-ROAD TRAILS!**

**Slow speed 4-wheel drive vehicles*,
 UTV's, bicycles and hikers.**

- Over 35 miles of trails with 3 levels of difficulty
- Picnic shelters with grills
- Playground
- Restroom Facilities
- Camping/Rv/Shower House

FAMILY FRIENDLY!

*Sorry, no ATV's or motorcycles allowed.



2051 130th Road • MAPLETON, KANSAS


PAINTED BARRELS
 ON • THE • SQUARE

127 S. Summit • Girard, KS • (620) 724-4000 • www.paintedbarrels.com

Welcome, Big Kansas Road Trippers!!

Painted Barrels is a vendor boutique featuring new, hand-crafted and vintage gifts and decor. In addition to fabulous shopping from local artists and vendors, we have some fun BKRT activities planned for you:


★ **Kansas Candle Pour**
 Choose from several Kansas-themed scents and add your choice of color. One candle for \$15 or 2 for \$20. Advanced reservations required: (620) 724-4000

★ **Kansas Ornament Make & Take**
 Paint and assemble your own Kansas-shaped wood ornament to have as a keepsake from your Big Kansas Road Trip adventure! Just \$5.



See you soon!

BRONSON LOCKER
 SINCE 1966- 4 GENERATIONS
 FAMILY OWNED AND OPERATED



Over 50 years of experience
 OPEN MAY 5TH AND 6TH FOR
 PLANT TOURS 9AM-12PM
 5% OFF RETAIL PURCHASES
 BEEF STIX AND SUMMER SAUSAGE
 SAMPLES

ATTRACTIONS



BOURBON COUNTY

CITY	DAY(S)	HOURS	SITE	DESCRIPTION	ADDRESS	PHONE
Bronson	Thu-Sun	Daylight Hours	Civil War Statue	Charles and Spruce (City Park). Posed in the middle of the park is one of only four white-bronze (cast zinc) Civil War statues in the state.	Charles and Spruce Streets	
Bronson	Thu-Sun	Daylight Hours	First Horseshoe Tournament	Bronson was home to the first horseshoe pitching tournament in the world! You are welcome to bring your own horseshoes and play.	City Park, State and Spruce Streets	
Fort Scott	Thu-Sun	Daylight Hours	Block House	The two-story wooden structure just outside the fort's entrance was built around 1864 to help Fort Scott (town and post) defend against anticipated Confederate advances.	Old Fort Blvd. and Oak	
Fort Scott	Thu-Fri	8:30am- 4pm	Bourbon County Courthouse	Visitors are welcome to go to the third-floor courtroom (if court is not in session) to view the 1929 D.H. Overmeyer mural "Justice Enthroned." A Civil War cannon, war memorials, and a GAR monument guard the front lawn.	210 S. National	620.223.0780
Fort Scott	Thu-Sun	Daylight Hours	Brick Street History	In the early 1900s, a large plant here made 100,000 bricks every 10 days. The bricks were used to construct the Panama Canal and Indianapolis Motor Speedway. More than 10 miles of brick streets remain in Fort Scott.	Downtown	
Fort Scott	Thu-Sun	9am-4pm	First Presbyterian Church	When the 1888 church was razed, many of the bricks and materials were reused to build the present 1924 church. The auditorium, which seats 1,000, held the funeral for native son Gordon Parks. Sunday services, 10:30am.	308 S. Crawford	620.223.3180
Fort Scott	Thu-Sun	Daylight Hours	Fort Scott Downtown Historic District	Oak to Third and Scott to National. The downtown boasts 58 contributing buildings to the historic district designation.	Downtown	620.670.2750
Fort Scott	Thu-Sun	Daylight Hours	Fort Scott Historic Driving Tour	The driving tour brochure, available at the Visitor Center, describes 46 sites and provides an excellent overview of the town or visit their website and download the brochure. visitfortscott.com	Visit Fort Scott, 231 E. Wall	
Fort Scott	Thu-Sun	Daylight Hours	Fort Scott National Cemetery	Gravestones for U.S. Colored troops, Native American soldiers, buffalo soldiers, Confederates from the 1864 Mine Creek battle, and memorials to those who never came home from various wars. In 1862 President Lincoln designated these grounds a national cemetery.	900 E. National	620.223.2840
Fort Scott	Thu-Sun	8:30am-4:30pm	Fort Scott National Historic Site	Named for General Winfield Scott, the fort originally was established in 1842. Soldiers garrisoned here until 1853 to maintain peace between indigenous and relocated Indian tribes. In 1855 the government auctioned the fort structures to newly arriving settlers, and the area became the nucleus of the town of Fort Scott.	1 Old Fort Blvd.	620.223.0310
Fort Scott	Thu-Sat	Thu-Fri 9:30am-5:30pm; Sat 9:30am-1:30pm	Fort Scott Public Library	Built in the Beaux Arts style, the 1904 two-story red-brick Carnegie library (NRHP) still operates as the Fort Scott library.	201 S. National	
Fort Scott	Thu-Sun	Daylight Hours	Frontier Military Historic Byway	From Fort Gibson, Oklahoma, through Fort Scott, and north to Fort Leavenworth, this byway follows the old military road established between 1838 and 1845 to connect these forts.	Old Fort Boulevard	
Fort Scott	Thu-Sun	Daylight Hours	Gordon Parks Gravestone	From 23rd, 1 1/2 miles south on U.S. 69, then 1/2 mile west on Indian. Look for a black vertical stone in the cemetery's north end (section 7) by the road.	Evergreen Cemetery, 914 215th St.	
Fort Scott	Thu-Sat	Thu-Fri 9am-5pm; Sat 10am-4pm	Gordon Parks Museum	Gordon Parks, born in Fort Scott in 1912, was a pioneer for blacks in the fields of photography, filmmaking, and writing. See his writing desk, a film camera and tripod, and some of his iconic photographs including those of the Tuskegee Airmen, Muhammad Ali, and American Gothic.	Fort Scott Comm. College campus, 2108 S. Horton St.	
Fort Scott	Thu-Sun	Daylight Hours	Gunn Park	In 1910 W.C. Gunn donated the land for this park, later WPA added the main lake, stone shelter houses and walls. Also find an 18-hole disc golf course, biking and hiking trails, dog park, and second lake stocked with trout.	1010 Park	620.223.0550
Fort Scott	Thu-Sun	Daylight Hours	Gunn Park Doll Houses	In 1927, park caretaker, E.V. Kelley built two unique stone, doll houses for his young daughters. As you enter Gunn Park you'll see them to the south. The abandoned caretaker's home is nearby.	1100 Park	620.223.0550



ATTRACTIONS

BOURBON COUNTY ... CONTINUED

CITY	DAY(S)	HOURS	SITE	DESCRIPTION	ADDRESS	PHONE
Fort Scott	Thu-Sun	Daylight Hours	LaRoche Baseball Complex	This impressive, state-of-the-art LaRoche Baseball Complex was funded by major league baseball star, Adam LaRoche, who graduated from high school in Fort Scott.	4805 Campbell Dr.	620.223.0550
Fort Scott	Thu-Sat	Thu-Fri 10am-5pm; Sat 10am-4pm.	Lowell Milken Center for Unsung Heroes	This exhibition space recognizes unsung heroes who stood up for others, often at great risk to themselves. Their compelling stories are told through interactive kiosks and displays.	1 S. Main St.	620.223.1312
Fort Scott	Thu-Sun	Daylight Hours	National Avenue Bridge	The rust-orange 1933 Marsh rainbow single-arch bridge stands out as it spans the Marmaton River. From 1st, ½ mile north on National.	336 N. National	
Fort Scott	Thu-Sun	Daylight Hours	Pine Lawn Cemetery	Established circa 1869 as the interment grounds for the Jewish community that thrived in Fort Scott in the 1880s and 1890s. From E. Wall, 3 miles south on U.S. 69/K-7, ½ mile west on Ironwood, then ¼ mile south on 215th.	South of Fort Scott on 215th	
Fort Scott	Thu-Sat	8am-5pm	Post Office Section Art	This New Deal (Depression era) Section artwork can be viewed inside the Post Office and taking the elevator to 2nd floor.	120 S. National	
Fort Scott	Thu-Sun	Daylight Hours	The Learning Tree Film Sign Trail, 1968	In 1968, Fort Scott was featured in several scenes of Gordon Parks film, "The Learning Tree." The trail is a series of signs located at the different scene locations where the filming of The Learning Tree took place.	2108 S. Horton St.	620.223.2700 Ext. 5850
Fort Scott	Thu-Sun	See Description	Trolley Tours	Learn about the national cemetery, "painted ladies," the horse race track, Mark Twain's secretary's studio, Pill Hill, and all sorts of intriguing Fort Scott history. Find the trolley at the Fort Scott Visitor Information Center. Admission charge. Thu-Fri 11am, 12pm, 1pm, 2pm, 3pm; Sat 10am, 11am, 12pm, 1pm, 2pm, 3pm; Sun 1pm, 2pm	231 E. Wall	620.670.2750
Fort Scott	Thu-Sun	Noon-6pm	Vinedo del Alamo Vineyard	Vinedo Del Alamo is the first winery in the world to bottle Arandell grapes without the use of other blends and varieties. Take a relaxing self guided tour of the vineyard which will be in full bloom. A free tasting with the purchase of one bottle of wine.	2304 Poplar Rd.	620.215.6311
Fulton	Thu-Sun	Daylight Hours	Fulton High School Architecture	Three distinct eras and architectural designs are apparent in the former Fulton School, listed on the NRHP. Closed as a school in 1978, the building is now a community center.	408 W. Osage	
Fulton	Thu-Sun	Daylight Hours	Fulton Marsh Arch Bridge	Since 1927 traffic has crossed the Little Osage River on the sturdy Marsh rainbow single-arch bridge. In Fulton, from E. Spruce, go ½ mile north on 215th and drive over the bridge.	215th St. (Old U.S. Hwy. 69)	
Mapleton	Sat-Sun	Sat 8am-7pm, Sun 8am-5pm	Kansas Rocks Recreation Park	Trails for mountain bikers, hikers, utility and four-wheel-drive vehicles. Kanrocks, as the park is known, is a getaway to the outdoors in a beautiful rocky terrain. Admission charge.	2051 130th St.	620.829.5328
Rural Bourbon Co.	Thu-Sun	Daylight Hours	Bourbon State Fishing Lake & Waterfall	The waterfall usually runs a short period during the spring from early April to the end of June. Find the waterfall on the north end of the lake, about a quarter mile from Ivory Rd.	In Bourbon County (west) near Allen County	

CHEROKEE COUNTY

CITY	DAY(S)	HOURS	SITE	DESCRIPTION	ADDRESS	PHONE
Baxter Springs	Thu-Sun	Daylight Hours	Battle of Baxter Springs	In 1863, William Quantrill's Confederate guerillas attacked Fort Blair in Baxter Springs. Later, the guerrillas came upon a Union wagon train and tragically massacred most of Blunt's command. A replica of the earth and log Fort Blair is at this site, and a kiosk provides information.	198 E. 6th	
Baxter Springs	Thu-Sun	Thu-Sat 10am-4:30pm, Sun 1-4pm	Baxter Springs Heritage Center & Museum	Route 66, lead and zinc mining, Civil War battles, the Osage Indian tribe, Mickey Mantle and the world's longest hand-carved wooden chain. Continue your search for history by picking up walking/driving tour brochures—for Civil War and historic sites and for downtown historic buildings.	740 East Ave.	620.856.2385
Baxter Springs	Thu-Sun	Daylight Hours	Black Dog Trail Marker	Chief Black Dog's migratory Osage tribe blazed what is now known as the Black Dog Trail, a 200-mile passage from present Baxter Springs to present Oxford. Eventually, the trail evolved into highways. Seventh Street was part of the trail and designated by a historical marker north of the museum.	740 East Ave.	

ATTRACTIONS



CHEROKEE COUNTY ... CONTINUED

CITY	DAY(S)	HOURS	SITE	DESCRIPTION	ADDRESS	PHONE
Baxter Springs	Thu-Sat	Thu-Fri 9am-5pm, Sat 9am-12pm	Johnston Library	The town library has the appearance of a courthouse because in 1872 it was intended to be one. It was never used for that purpose, but it was a city hall and a college before Peter Johnston donated it to the city in 1905 for its library.	210 W. 10th St.	620.856.5591
Baxter Springs	Thu-Sun	Daylight Hours	Outdoor Bas-Relief Mural	Images of mining, cowtown days, Osage Indians, Route 66, the famous wooden chain, and more town history compose this mural. Find it on the south side of the American Bank.	1201 Military Ave.	
Baxter Springs	Thu-Sun	Daylight Hours	Rial A. Niles House	This 1870 red brick home is impressive with a central cupola topping the Italianate structure. It also features walkout windows and ornamental porch posts and arches. It is currently undergoing restoration by the owner. Read more about the history on Facebook @rialanileshouse. Drive by only.	605 E. 12th	
Baxter Springs	Thu-Sat	10am-4:30pm	Route 66 Visitor Center	You might guess from its iconic cottage style that this visitor center had a previous life as a Phillips 66 gas station, built in 1930.	940 Military Ave.	620.856.2385
Baxter Springs	Thu-Sun	Daylight Hours	Soldiers' Lots	From Military, 2 miles west on 12th/U.S. 166. Designated as an official Soldiers' Lot by the National Cemetery Administration, it is the final resting place for those killed in the 1863 Battle of Baxter Springs and other area engagements.	Baxter Springs Cemetery, 166 West Ave.	
Baxter Springs	Thu-Sun	Daylight Hours	Spring River	For a view of the lovely Spring River, from Route 66, travel 1 mile east on E. 12th to Riverside Park.	E. 12th, Riverside Park	
Baxter Springs	Thu-Sun	Daylight Hours	Veterans Memorial	This impressive veterans memorial honors local veterans and the memory of all American veterans.	1238 Park Ave.	
Baxter Springs	Thu-Sun	Daylight Hours	Tri-State Marker	From Baxter Springs, go 5 miles east on 166/400, turn right (south) and continue on U.S. 400 for 2 miles to a roundabout, 600 feet west on Downstream, then 1,000 feet south on an unnamed gravel road. At the dead end you'll come to an uncommon stone obelisk monument. Built in 1938 by the National Youth Administration, the marker designates the junction of Kansas, Missouri, and Oklahoma.	See Description	
Carona	Thu-Sun	11am-5pm	Heart of the Heartlands Railroad Museum & Carona Depot Complex	From K-7, 2 miles west on K-102, then ¼ mile south on 20. A premier railroad museum includes two restored depots, steam/diesel locomotives, freight, cabooses and passenger cars. Also a large museum building with many displays. Guided tours on request.	6769 NW 20th	620.423.5163
Columbus	Thu-Fri	9am-4:30pm	Cherokee County Courthouse	Silver wheat shafts on the facade of this 1955 courthouse add an artistic glint, but the 1919 Seth Thomas clock in the 40-foot tower on the courthouse lawn is the real gem.	110 W. Maple	620.429.2042
Columbus	Thu-Fri	Thu-Fri 9am-6pm, Sat 9am-3pm	Columbus Carnegie Library	George P. Washburn and Son designed this red-brick, Carnegie library in 1913 that still serves the town. See the story walk at City Park and giant chess board. Across the street, read the plaque commemorating Columbus as the founding place of the Long-Bell Lumber Company which became the largest lumber company in the world.	205 N. Kansas	620.429.2086
Columbus	Thu-Sun	Daylight Hours	Columbus City Park-WPA Structure	The WPA built the 1930s stone structures, including the retaining wall and the (no longer used) swimming pool bathhouse, in City Park. Also find here a walking trail, two large playground areas and disc golf course.	615 S. Delaware	620.429.2159
Columbus	Thu-Sat	1-5pm	Columbus Museum	The ball of string here might be the second most famous one in the state. Other exhibits feature Columbus native Merle Evans (bandleader for the Ringling Bros. and Barnum & Bailey Circus), agriculture, history, and industry. Pick up a driving tour brochure of historical homes and points of interest.	100 S. Tennessee	620.429.2160
Columbus	Thu-Sun	Daylight Hours	Columbus Veterans Memorial	A black granite veterans memorial is located on the northeast corner of the courthouse lawn. Find pavers with names honoring the servicemen and women from Columbus.	110 W Maple St.	
Columbus	Thu-Fri	8am-2pm	Duke Wellington Wall Mural	Duke Wellington, a native of Columbus, painted a huge mural featuring the history of Columbus and Kansas. He served as an art director in Hollywood from 1927-1956 at both Paramount Studios and National Screen Service, a movie poster company.	320 E. Maple	
Columbus	Thu-Sun	Daylight Hours	Frisco Caboose & Columbus Wye Switch	Look for the Frisco caboose on the grounds at the Columbus Museum. It is one of only 13 train cars converted into a caboose. With the caboose is the Columbus Wye, a three way switch allowing trains to turn around, and the only one of its kind.	100 S. Tennessee	620.429.2160



ATTRACTIONS

CHEROKEE COUNTY ... CONTINUED

CITY	DAY(S)	HOURS	SITE	DESCRIPTION	ADDRESS	PHONE
Columbus	Thu-Sat	Thu, 4-10pm, Fri 4-11:45pm, Sat, 9am-11:45pm	Grace Lanes Bowling Alley	Recently renovated downtown bowling alley hopping with 8-lanes of action and a delicious snack bar and an exciting arcade. We offer leagues, bowling packages, birthday parties, and pro shop services.	239 W. Maple St.	620.429.2390
Columbus	Thu-Sun	Daylight Hours	Mined Land Wildlife Area	From the 1920s to 1974, only 2,000 acres of this 13,000-acre property were not surface mined. Now those scarred tracts of land, have evolved into woodlands and grasslands that wind around a thousand deep pit lakes perfect for birding, canoeing, kayaking, or fishing. Maps of the lakes are available at Big Brutus and from the Mined Land Wildlife Area office at 7545 NW Bellevue (from Big Brutus, ½ mile south on NW 60, 1 mile west on Coalfield, 2 miles south on NW 70, then ¾ mile west on Bellevue).	7545 NW Bellevue	620.431.0380
Columbus	Thu-Fri	8am-2pm	Post Office Section Art - Columbus	Moved from the post office to the community building, the bas-relief is a sand sculpture produced by Waylande Gregory in 1940. He was considered one of the most innovative and prolific American art deco ceramics sculptors of the early 20th century.	320 E. Maple	
Columbus	Thu-Sun	Daylight Hours	T.J. Losey Memorial	Admire the detail on the larger-than-life monument to Thomas J. Losey (1846-1936), a member of the 14th Kansas Cavalry during the Civil War. A tree theme runs through the elaborate monument. The cut-off branches on the sculpted tree stump symbolize life cut short.	1130 SE Wyandotte; City Cemetery	
Galena	Thu-Sat	10am-5pm	Cars on the Route	See the fabled little 1951 International tow truck that inspired the Tow Mater character in the hit animated movie "Cars." Check out the 1926 Kan-O-Tex gas station to shop for Route 66 souvenirs and see historic photos and memorabilia from bygone days.	119 N. Main St.	620.783.1366
Galena	Thu-Fri	1-4pm	Galena Mining and Historical Museum	Amazing photos and artifacts capture the region's mining days from 1877 to the 1920s, when lead and zinc were the heart and soul of Galena.	319 W. 7th (K-26)	620.783.2192
Galena	Thu-Sun	9am-6pm	Gearhead Curios	A new attraction in Galena, this 1939 Texaco station has been restored by owner Aaron Perry and his family. You'll find Route 66 curios, artwork for the gearhead and a place to gather and share stories.	520 S. Main St.	785.554.7694
Galena	Thu-Sun	Daylight Hours / Stories told daily 10am-4pm	Luigi's Pit Stop	Hear the stories of how Pixar chose the sites in southeast Kansas that brought inspiration to the popular movie "Cars." You'll hear from either Dean "Crazy Legs" Walker or Melba "the Mouth." Take pictures with movie characters Luigi, Lightning McQueen, the Sheriff and more.	205 E. Front Street / Rt. 66 Original Alignment	620.202.1615
Galena	Thu-Sun	Daylight Hours	Pappy Litch Park	Named for a beloved local historian, the park features a gazebo and a granite monument honoring the mining history of Galena and the Will Rogers Highway (Route 66.)	500 Main St.	
Galena	Thu-Sun	Daylight Hours	Route 66 Postcard Mural	A colorful outdoor Route 66 Postcard mural dresses up the side of the building at Main and 7th. A little pocket park in front of the mural is a spiffy place to take a selfie.	S. Main St. and Rt. 66	
Galena	Thu-Sun	Daylight Hours	Schermerhorn House	The 1895 two-story Queen Anne home was originally the residence of prominent businessman Edgar Backus Schermerhorn. The house appears to have fallen on hard times, but it is still an impressive sight.	803 E. 5th	
Galena	Thu-Sun	Daylight Hours	Schermerhorn Park	From 7th, 2¼ miles south on Main/K-26. Just before Shoal Creek Bridge, turn east into the park. The WPA built stone terraces and retaining walls are fascinating features and transport you back to an earlier time. Wade in the cool shallow waters of Shoal Creek. Find Schermerhorn Cave, home to the dark-sided salamander, cave salamander, and gray-bellied salamander, all listed on the Kansas endangered species list.	3501 S. Main St.	620.783.5265
Galena	Thu-Sun	Thu-Sat 10am-4pm, Sun 1-4pm	Southeast Kansas Nature Center	On top of the elaborate WPA stone terraces, the nature center is in an excellent setting to watch small, living animals and use interactive displays to learn more about the threatened and endangered species of this area. A large collection of American Indian artifacts is also on display. Free admission.	3511 S. Main; Schermerhorn Park	620.783.5207

ATTRACTIONS



CHEROKEE COUNTY ... CONTINUED

CITY	DAY(S)	HOURS	SITE	DESCRIPTION	ADDRESS	PHONE
Riverton	Thu-Sun	Thu-Sat 8:30am-7pm, Sun 12-6pm	Nelson's Old Riverton Store	This 1920s grocery store is one of the most nostalgic stops in the state. Memorabilia of the "Mother Road" (Route 66) line the shelves and are stacked up to the pressed-tin ceiling. The Old Riverton Store is an explorer's haven!	7109 SE Rt. 66 (U.S. 400)	620.848.3330
Riverton	Thu-Sun	Daylight Hours	Rainbow Bridge on Route 66	From the roundabout at 400/66, 1.5 miles west on Route 66/Beasley. Drive or walk over this 1923 beauty to appreciate the one-and-only surviving concrete Marsh arch single-span bridge on the entire Route 66. Listed on the NRHP as Brush Creek Bridge.	2 miles west on Rt. 66	
Riverton	Thu-Sun	Daylight Hours	Route 66 Kiosks and Sculpture	From U.S. 400 roundabout, 150 yards west on Route 66/Beasley. Get your kicks on Route 66 at the kiosks portraying area history and attractions. Also see a Route 66 sculpture created by the Riverton High School FFA Club.	U.S. 400 Roundabout, Route 66/Beasley	
Rural Cherokee Co.	Thu-Sun	Daylight Hours	Kansas Historic Route 66 Byway	Of the 2,448 miles of the famous Route 66, 13.25 miles pass through Kansas across the southeast corner of Cherokee County. This short route is full of great explorer attractions--a charming narrow road, rainbow arch bridge, throwback market, a WPA park with a shallow wading creek and three delightful towns.	See website for route information	620.762.0717
Rural Cherokee Co.	Thu-Sun	Daylight Hours	Kansas Route 66 Historic District	From Military, 5 blocks west on 3rd, then 3 miles north on Willow. Between the Willow Creek bridge and the Marsh rainbow single-arch Brush Creek bridge is a stretch of Route 66 that retains many remnants from its original construction.	See Description	
Scammon	Thu-Sun	9am-5pm	St. Bridget Church	While in Scammon, stop at the 1907 red-brick St. Bridget Church to see its original stained glass windows. Each one is an artistic depiction of a different Bible story.	406 N. Keith	620.479.2601
Weir	Thu-Sun	Daylight Hours	Hosey Hill Cemetery	A fascinating cemetery filled with uncommon gravestones, Italian family names that reflect the heritage of the area, beautiful sculptures—and a grand stone elephant statue atop Inman E. Vandry's gravestone. From Dreher, 1¼ miles west on Main.	1259 NE Hwy 103	
Weir	Thu-Sun	Daylight Hours	Vintage Texaco Station	No longer operating, the little restored Texaco station on W. Main creates a nostalgic memory with its simple 1920s design, gas pumps, free-standing Texaco sign and pole, and large Coca Cola button sign.	W. Main St.	
Weir	Thu-Sun	Daylight Hours	Weir Brick Water Tower	Although taller, the brick cylindrical water tower at Weir is a near twin of the tower in Cherokee. Unlike Cherokee's 1896 structure, the 1889 Weir tower is no longer in use.	E. Forest/N. Washington Sts.	
West Mineral	Thu-Sun	9am-4pm	Big Brutus	From K-7, 6 miles west on K-102 (becomes Scammon), then ½ mile south on NW 60. One of the two largest electric coal shovels in the world still assembled. You're welcome to walk up to Big Brutus and stand in its bucket. You may also climb up five stories to the "belly" of this big boy and sit in the control seat. Admission charge.	6509 NW 60th St.	620.827.6177
West Mineral	Thu-Sun	Daylight Hours	Soffietti-Boccia Grocery Store	The Soffietti-Boccia Grocery Store operated from circa 1915 and 1982. The Soffietti and Boccia families not only provided groceries, hardware, cloth, and feed, they provided an alternative to the 'company stores' owned by the coal companies dominating the region." Listed on the National Register of Historic Places and is drive by only.	313 Fleming St.	

CRAWFORD COUNTY

CITY	DAY(S)	HOURS	SITE	DESCRIPTION	ADDRESS	PHONE
Arma	Thu-Sun	Daylight Hours	Arma Mural	In 2009 local artist Gary Lofts and his wife, Susan, spearheaded a campaign to paint a large mural on the side of a 1907 downtown building honoring the town's centennial.	604 E. Washington	
Arma	Thu-Sun	Daylight Hours	Arma Veterans Memorial	The memorial honors local veterans who served in all wars. Flags representing four branches of the military fly in front of the memorial.	N. 5th and E. Washington St.	
Arma	Thu-Sun	Daylight Hours	Ed Babcock Wood Sculptures	All kinds of fun can be found in the city park, from whimsical animals carved from logs by local chainsaw artist Ed Babcock, to playgrounds, horseshoe pits and bocce courts.	251 N. 5th, Arma City Park	620.347.8355
Arma	Thu-Sun	Daylight Hours	Longest Sidewalk	The sidewalk runs parallel to U.S. 69 Business from the south end of Franklin to E. Hector in Arma. When Franklin High School closed in the late 1920s, children had to walk to school in Arma. To provide safe passage, in 1937 the WPA finished a one-and-three-quarter-mile sidewalk between the two towns. The Guinness Book of World Records recorded this sidewalk as the longest walkway connecting two towns.	Franklin to Arma, KS (see description)	



ATTRACTIONS

CRAWFORD COUNTY ... CONTINUED

CITY	DAY(S)	HOURS	SITE	DESCRIPTION	ADDRESS	PHONE
Cato	Thu-Sun	10am-4pm	Historic 1869 Cato Schoolhouse	Interested in rural one-room schools? The historic 1869 Cato Schoolhouse is the first school in Crawford County and located in Cato, the first community in Crawford County. On U.S. 69 between Ft. Scott and Pittsburg, turn west on 720 Ave, 1 mile north of the Arcadia turn-off (or 1 mile south of the Bourbon Co. line). Go west for 1 mile, then turn north for 1/2 mile and then left 1 mile to Cato.	37.67042, -94.74140 (mapping address)	417.825.2127
Cherokee	Thu-Sun	Daylight Hours	Historic Water Tower	The plaque on the tall cylindrical red-brick water tower reads, "Cherokee Water Works 1896." According to the city clerk, this water tower is the eighth oldest still in use in the United States.	305 S. Vine St.	
Cherokee	Thu-Sun	Daylight Hours	Mined Land Scenic Back Road	From K-7 in Cherokee, 5 miles west on U.S. 400, 2 miles north on 100, 2 miles east on 520, then 2 miles south on 120 and you're back to U.S. 400. Leave the backlot at your first turn (north on 100) to drive through part of the Mined Land Wildlife Area—land once devastated in the aftermath of strip mining is now lush with woodlands, grasslands, and abundant water. One mile east on 520 you'll cross Limestone Creek on the picturesque Hudgeon Bridge. (GPS for bridge location: 37.368687, -94.899135)	Near Cherokee, KS (see description for route)	
Crawford Co	Thu-Sun	Daylight Hours	Strip Pit Lake Scenic Drive	From U.S. 69 just south of Franklin, 4½ miles east on 620, 3 miles north on 270 to Mulberry, continue 6 miles north on 270 to Arcadia, then 4 miles west on Arcadia (becomes 710) to U.S. 69. Along the way you'll pass many strip pits, signs, and other vestiges of old coal mining camps. Many of these pits are from the 1930s, when massive coal shovels ripped into the earth leaving barren land and piles of gob (discarded coal waste). But now you'll see strip pits in their restored glory, brimming with water in a new wooded environment.	See Description	
Farlington	Thu-Sun	Daylight Hours	Civilian Conservation Corps (CCC) Memorial & Museum	A memorial honors the CCC workers who built this lake in the 1930s, a New Deal federal program. You'll see a bronze statue of a CCC worker, a one-and-a quarter-mile memorial trail past artifacts used to build the lake, and a small museum inside a unique stone structure formerly a water tower. Museum is always open.	1 W. Lake Rd.	
Farlington	Thu-Sun	Daylight Hours	Crawford State Park	The 500-acre park is located on the edge of the Ozarks. State park entrance charge. Cabins available. Reservations required. Located 10 miles north of Girard.	1 W. Lake Rd.	620.362.3671
Franklin	Thu-Sun	Daylight Hours	Franklin Community Park & Memorial Garden	On May 4, 2003, a vicious tornado destroyed much of this tiny village. A marker relates the tornado tragedy, and a plaque on a pecan tree explains the metal still wrapped and twisted around the trunk.	Broadway & 5th Streets	
Franklin	Thu-Sun	Daylight Hours	Jefferson Highway	Franklin is on the Kansas Frontier Military Historic Byway but also is on the route of the Jefferson Highway, the first transcontinental road to traverse North America north to south.	Franklin	
Franklin	Thu-Sat	10am-4pm	Miner's Hall Museum	On this site, prior to the 2003 tornado, stood a community hall where the Amazon Army (a women's protest group supporting striking miners) started its march in 1921. A new metal building now occupies the spot and serves as the Miners Hall Museum. Mining and miner artifacts portray this cultural history.	701 S. Broadway St.	620.347.4220
Frontenac	Thu-Sat	9am-6pm	Pallucca's Italian Market & Deli	Fresh spaghetti sauce, meatballs, homemade Italian sausage, fresh-cut meats, Frontenac bakery bread—you'll find these and more at Pallucca's, which dates to 1909. New owners Ethan and Alyssa Edwards continue the market's century-old traditions. Try their lunch specials 11:30am-1pm.	207 E. McKay	620.231.7700
Frontenac	Thu-Sun	Daylight Hours	Wilderness Park	In Frontenac, from Parkview/U.S. 69, ½ mile west on McKay. You'll find more than four miles of walking trails in this wooded area, which is picturesque during the fall and shady during the hot summer.	907 W. McKay	620.231.4100
Girard	Thu-Sun	Daylight Hours / Courthouse open Thu-Fri 8am-4pm	Crawford County Courthouse	This 1922 Modern Eclectic structure features marble walls and staircases and beautiful stained-glass ceiling above the third floor. A UH-1H Huey helicopter and veteran memorials are found on the grounds.	111 E. Forest	620.724.6115

ATTRACTIONS



CRAWFORD COUNTY ... CONTINUED

CITY	DAY(S)	HOURS	SITE	DESCRIPTION	ADDRESS	PHONE
Girard	Thu-Sat	Thu 9:30am-6pm, Fri 9:30am-5pm, Sat 9am-2pm	Girard Carnegie Library	Still serving as the Girard Public Library, it contains a collection of the Haldeman-Julius <i>Little Blue Books</i> . In 2002 an impressive addition was added to this historic limestone structure. Pick up a map for a driving tour of the town.	128 W. Prairie	620.724.4317
Girard	Thu-Sun	Thu-Sat 9am-4pm, Sun 1-4pm	Girard History Museum	Three buildings on site, including St. John's Episcopal Church, built in 1888. Exhibits include Julius Wayland and E. Haldeman-Julius's "Appeal to Reason", then the largest socialist periodical in the country and the Little Blue Books, small paperback books that made literature available to the masses at a cheap price. A 12-block historical 45 minute tour offered daily at 1:30pm.	300 S. Summit	620.238.1706
Girard	Thu-Sun	Daylight Hours	Girard Town Site	In 1868 Dr. Charles Strong killed a deer while hunting in this area. At the spot the deer fell, Strong drove a stake into the ground and announced that he would build a town on this site. A marker beside a deer statue on the town square describes this unusual town beginning.	E. Prairie & S. Summit Streets	
Girard	Thu-Sun	Thu 9:30am-6pm, Fri 9:30am-5pm, Sat 9am-2pm	Historic Driving Tour	Girard's history awaits you on this tour, which includes 19 sites. Find a driving tour brochure at the front desk of the public library.	128 W. Prairie (Public Library)	620.724.4317
Greenbush	Thu-Sun	Daylight Hours	St. Aloysius Historic Site	From Summit in Girard, 8 miles west on K-47. The story of this historic site began when a Catholic priest promised to build a church on this site if he survived a terrible storm. He survived and in 1871 he built the church. When a second storm destroyed the wooden church, a stone structure was built in 1881, and used until a larger church was completed in 1907. Then in 1982 lightning struck St. Aloysius Church and destroyed it. Today its grand stone ruins remain as a haunting piece of Greenbush history.	947 KS-47	620.724.8536
McCune	Thu-Sun	Thu-Fri 9am-6pm, Sat 9am-1pm, Sun 12-4pm	McCune Museum	The museum holds great heritage of the farming community and surrounding area. McCune is the home of two Olympian basketball athletes, the Kelley Brothers. Exhibits include a farm house, barn and an amazing Roy Roger's display.	509 6th St.	620.632.4112
Pittsburg	Thu-Sun	Daylight Hours	A Banana Tree in Kansas?	When your college mascot is a gorilla it stands to reason that a banana tree should be nearby. Enjoy a stroll through this beautiful campus to look for the trees, although they are set out only in warmer months.	1701 S. Broadway, Pittsburg State University Campus	
Pittsburg	Thu-Sun	Thu-Fri 12-6 pm, Sat 10am-4pm, Sun 12-4pm	ArtForms Co-op Art Gallery	Take in this opportunity to visit a cooperative art gallery featuring local artists. They've gotten into the Big Kansas Road Trip theme with a new exhibit named "Kansas Road Trip." Support the arts!	620 N. Broadway	620.240.0165
Pittsburg	Thu-Sat	Thu 9am-3pm, Fri 9am-2pm, Sat 9am-1pm	Crawford County Historical Museum	Exhibits capture the area's history of coal mining, farming, printing, and ethnic diversity. Cow Creek Cowboy Days & Wild West Show happens Saturday. See Events section for more info.	651 S. U.S. 69	620.231.1440
Pittsburg	Thu-Sun	Thu 9am-3pm, Fri 9am-2pm, Sat 9am-1pm	Fun Zone Depot	Find 10,000 square feet of games, activities, and entertainment. From an indoor rock wall to an interactive floor projector, bounce houses and more. BKRT guests receive \$1.00 off per ticket, per session. Tickets can be purchased at the door and in advance on the website.	104 N Locust St.	620.719.8390
Pittsburg	Thu-Sun	Daylight Hours	Immigrant Park	The handsome brick Pritchett Pavilion graces the site where the old Europe Hotel and Frisco depot once stood. In the late 1800s and early 1900 these facilities received new immigrant families who came to work in the coal fields. Plaques tell the stories of these families.	106 W. 2nd	



ATTRACTIONS

CRAWFORD COUNTY ... CONTINUED

CITY	DAY(S)	HOURS	SITE	DESCRIPTION	ADDRESS	PHONE
Pittsburg	Thu-Sun	Daylight Hours	Jefferson Highway Garage	This former garage was located in one of the last buildings along the route to have its original Jefferson Highway signage. Read the sign on the front of the building and learn more about this historic highway.	408 N. Locust	
Pittsburg	Thu-Sun	7am-11pm	Lincoln Park	Lincoln Park has an aquatic center, miniature train, miniature golf course, fishing pond, playgrounds and Kiddieland, an amusement park for small children. Also bocce, basketball and tennis courts, nine hole disc golf, fishing, golf course.	813 Memorial Dr.	620.231.8310
Pittsburg	Thu-Sun	Daylight Hours	Miners' Memorial	A beautifully landscaped area features a larger-than life bronze statue of miner John Christian Ott and polished granite monuments inscribed with names of miners who worked in the Weir-Pittsburg coal fields. Informational kiosks along a sidewalk tell more about the life of a coal miner.	200 N. Walnut	
Pittsburg	Thu-Sun	Daylight Hours	Outdoor Art	Crawford County communities have a wide variety of outdoor murals, sculptures and monuments to discover. Use the website link to decide which ones you'd like to see. https://tinyurl.com/CrawfordArt	County wide	
Pittsburg	Thu-Sun	Daylight Hours	Pittsburg Cemeteries - Mount Olive & Highland Park	Dozens of mausoleums adorned with columns, peaked roofs, and arches, dominate the landscape at Mount Olive Cemetery, 402 E. Quincy, and at Highland Park Cemetery, Broadway and Centennial, south of the university.	402 E. Quincy	
Pittsburg	Thu-Fri	8am-5pm	Pittsburg Memorial Auditorium	Built in 1923 with design influence from the King Tut craze of the time, the auditorium is now a state-of-the-art venue for the performing arts and convention center. Local art in the lobby gallery.	503 N. Pine	620.231.7827
Pittsburg	Thu-Sun	Thu 9am-8pm, Fri 9am-5pm, Sat 10am-4pm, Sun 1-5pm	Pittsburg Public Library	This 1912 structure is one of the few Carnegie libraries in the country built with elements of Art Nouveau and the Prairie School style. See the stunning interior and permanent art collection including a landscape by Birger Sandzen.	308 N. Walnut	620.231.8110
Pittsburg	Thu-Sun	Daylight Hours	Pittsburg State University Gorillas	This is the only college in the nation to have a gorilla as its mascot. A 1965 bronze Gus Gorilla, stands on the south side of the Overman Student Center. A new life-sized, one-ton bronze gorilla was installed on the east side of Carnie Smith Stadium, 1705 S. Joplin.	302 E. Cleveland (Overman Student Center)	
Pittsburg	Thu-Sun	Daylight Hours	Pittsburg State University Veterans Memorial Amphitheater	Walk the entryways lined with flags of the 50 states and the official seals of the five military branches. The amphitheater features a half-sized replica of the Vietnam Veterans Memorial in Washington, D.C.	1909 S. Rouse	
Pittsburg	Thu-Sun	Thu 9am-8pm, Fri 9am-5pm, Sat 10am-4pm, Sun 1-5pm	Solidarity Mural	Inside the Public Library, Wayne Wildcat's colorful mural illustrates the 1921 Pittsburg event involving 6,000 women marching in protest of mining conditions and in support of striking miners. The New York Times dubbed these courageous women the Army Amazons, and their march became a turning point in labor history.	308 N. Walnut	
Pittsburg	Thu-Sun	Daylight Hours	Timmons Chapel	This all-faiths chapel built in the Country English Gothic style overlooks the university lake. The charming stone building is accented with a multicolor slate roof and a three-bell spire topped with a cross.	409 E. Ford (Pittsburg State campus)	



Look for the Big Kansas Road Trip page on Facebook or go to bigkansasroadtrip.com

Pittsburg's award winning and newly remodeled hotel features specialty suites, an indoor pool, meeting/reception facility and our famous cinnamon rolls.



4011 PARKVIEW DRIVE, PITTSBURG • 620-231-1177

Come Visit the Girard History Museum



300 S. Summit St.
Girard, Kansas

Many Collections!

620 - 238- 1706



We'd love to see you!

GIRARD \ KANSAS

Committed to Community.



*A great place to
call home!*



104 N. OZARK STREET \ 620.724.4715

DELI AND GROCERY

"HOME OF THE ANGELO SPECIAL"

- Tackle and Live Bait
- Daily Lunch Specials
- Deli Meat & Cheeses
- Meat & Cheese Trays for Holidays/Occasions
- Food Trailer for Events/Festivals
- Catering for Weddings/Events

9057 SW Hwy 160 • Columbus • 620-597-2525



*Building our
community
since 1894.*



Home of the
largest downtown
square in the
United States.



IOLA AREA
CHAMBER of COMMERCE & TOURISM

www.iolachamber.org

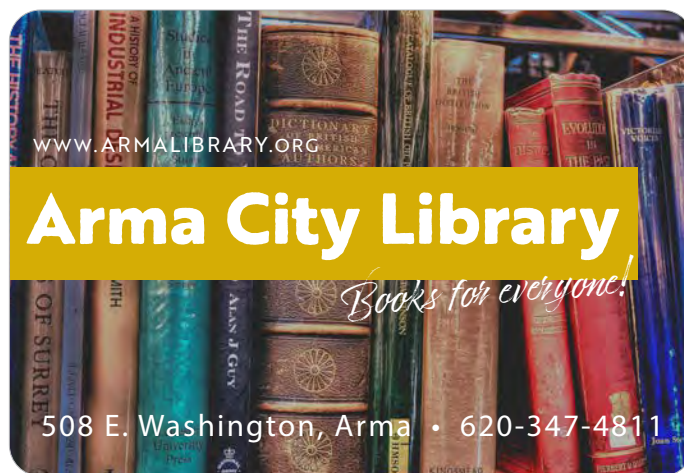
205 E. Madison, Iola • 620.365.5252

WWW.ARMALIBRARY.ORG

Arma City Library

Books for everyone!

508 E. Washington, Arma • 620-347-4811



Two of A Kind
BOUTIQUE

BOUTIQUE • VENDORS • COFFEE SHOP



1222 MILITARY AVE. BAXTER SPRINGS, KS
www.shoptwoofakindboutique.com



The Lavender Patch Farm

2376 Locust Road, Fort Scott, KS 66701
(620) 223-1364 • thelavenderpatchfarm.com



**Subscribe for 10%
off your first order.**

essential oil • lotion • lipbalm • bundles • culinary • & more



JOIN THE KANSAS EXPLORERS CLUB

The Kansas Explorers Club Meeting will be held Sunday, May 8 at the Franklin Community Park. Marci and WenDee will be there to run the meeting and sell t-shirts, BKRT car flags and the *Kansas Guidebook 2 for Explorers*. You'll also be able to renew your membership or join the club! To learn more about the club, go to kansassampler.org

After the meeting visit the excellent Miner's Hall Museum and do some fun things* on the Longest Sidewalk Connecting

SUNDAY, MAY 8 @ 10AM

Franklin Community Park
Broadway & Fifth
Franklin (Crawford Co.)

Two Towns in the U.S. This Kansas sidewalk is listed in the *Guinness Book of World Records* and *Ripley's Believe It Or Not*. It was also a finalist

for the 8 Wonders of Kansas Customs contest sponsored by the Kansas Sampler Foundation.

**Do a cartwheel, form a line with others and kick your legs high, do a yoga pose, stand on your head, run as fast as you can, skip down the sidewalk, take a selfie with your group and tag it #bkrt2022*

REMEMBER to bring a lawn chair!



Route 66 curios, artwork for the Gearhead and a place to gather to share stories.

GEARHEAD CURIOS

Greetings from the Gearheads. wish you were here!

520 S. Main
(Route 66 & Jefferson Hwy)
Galena, KS

**SMALL TOWN...
BIG ADVENTURES!**



LITTLE HOUSE ON THE PRAIRIE MUSEUM



RIVERSIDE BEACH AQUATIC CENTER



RIVERSIDE PARK & ZOO

Shopping • Dining • Lodging
War Memorials • Outdoor Recreation

Independence Chamber of Commerce



620-331-1890

www.indkschamber.org

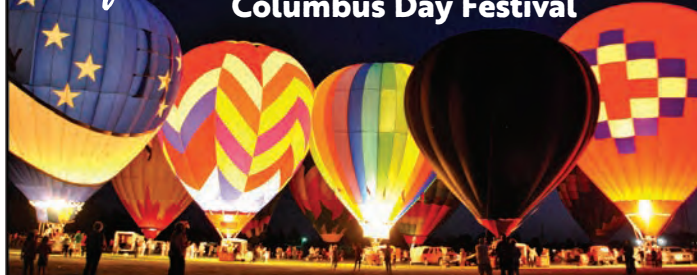
**EXPERIENCE
COLUMBUS**



**CHAMBER OF COMMERCE
AND
VISITOR CENTER**

Visit

**October 7 -9 for our
Hot Air Balloon Regatta &
Columbus Day Festival**



www.chamberofcolumbus.com | www.columbusdayballoons.com
620.429.1492

START HERE



FORT SCOTT AREA
CHAMBER
of Commerce
EST. 1842



HISTORIC DOWNTOWN
Fort Scott

STAY



Luther's
BBQ
★ EST. 2019 ★

Historic Downtown
Fort Scott, Kansas

SHARKY'S
Pub & Grub



SAVOR

10 RESTAURANTS INCLUDING

Angie Dawn's
Bartelsmeyer Jewelry
Better in Bourbon
Bids & Dibs

Hedgehog.INK! Book Store
Iron Star Antiques & Such
Museum of Creativity Gift Shop
Sunshine Boutique
Treasure Hunt Flea Market

SHOP

THESE FEATURED SHOPS
AND MORE



to the explorers

In Kansas, we cherish the journey as much as the destination. With so many sweeping scenic vistas, historic places that shaped the nation, quirky roadside must-sees, and scratch-cooked cafes, you can make every weekend a Big Kansas Road Trip.

The Kansas experience is a salute to the adventurous. To the wide-eyed wanderers. To the dreamers. To the stars.

KANSAS
TO THE STARS

Visit TravelKS.com to order
a free travel guide and plan
your Kansas road trip.

#ToTheStarsKS